



ISAP 2022

International Forum for Sustainable Asia and the Pacific

IGES
Institute for Global
Environmental Strategies

Climate change and SDG synergies and trade-offs: Interlinkage perspective

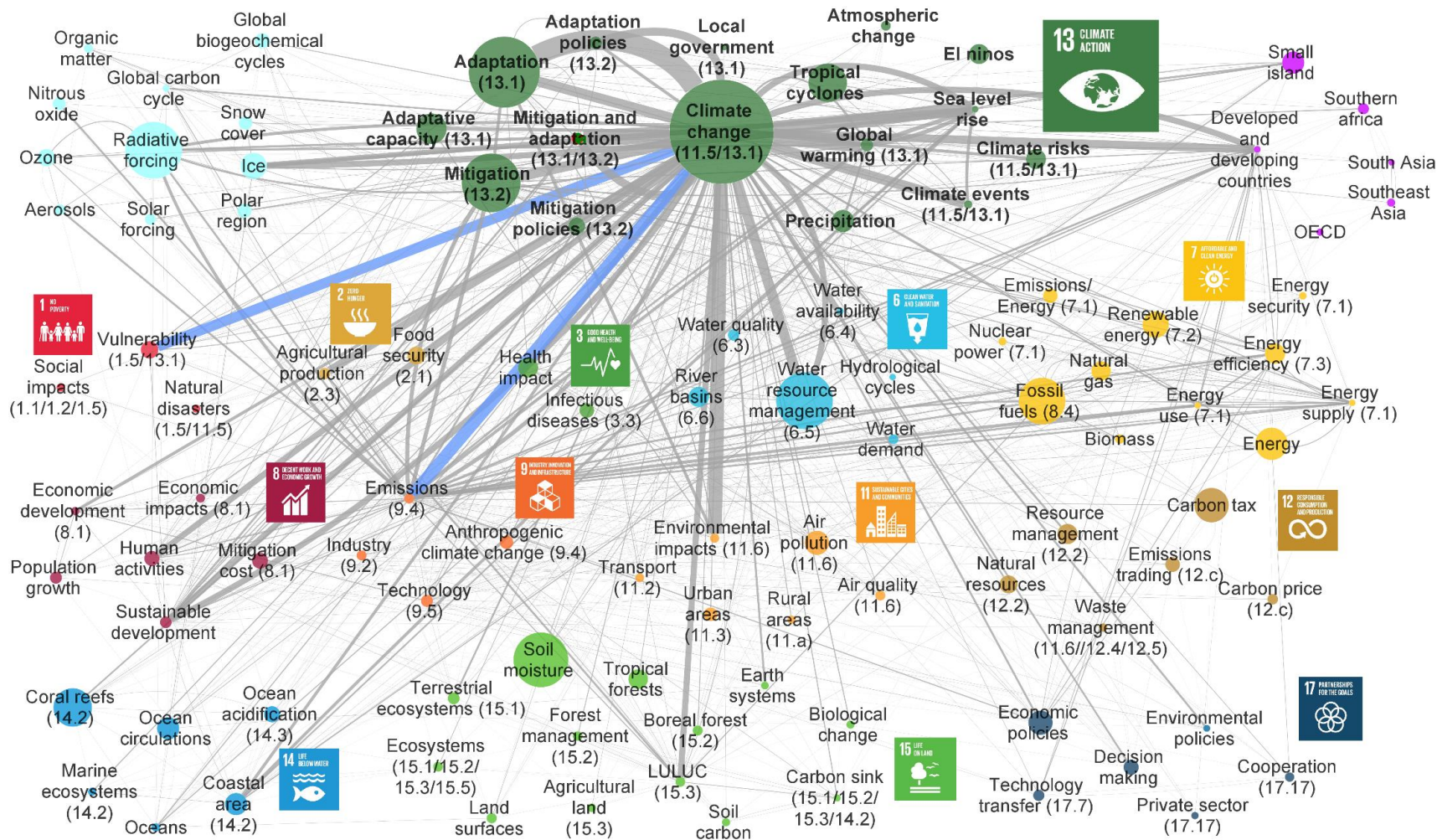
Mustafa Moinuddin, PhD
Deputy Director, Integrated Sustainability Centre, IGES

A common global vision for sustainable development



PARIS AGREEMENT
on Climate Change

Synergies and trade-offs: Complex interactions of Goal 13 with other SDGs



Note:

The figure was generated by using Cytoscape.

Each node indicates a top term and the size of nodes indicates their frequency.

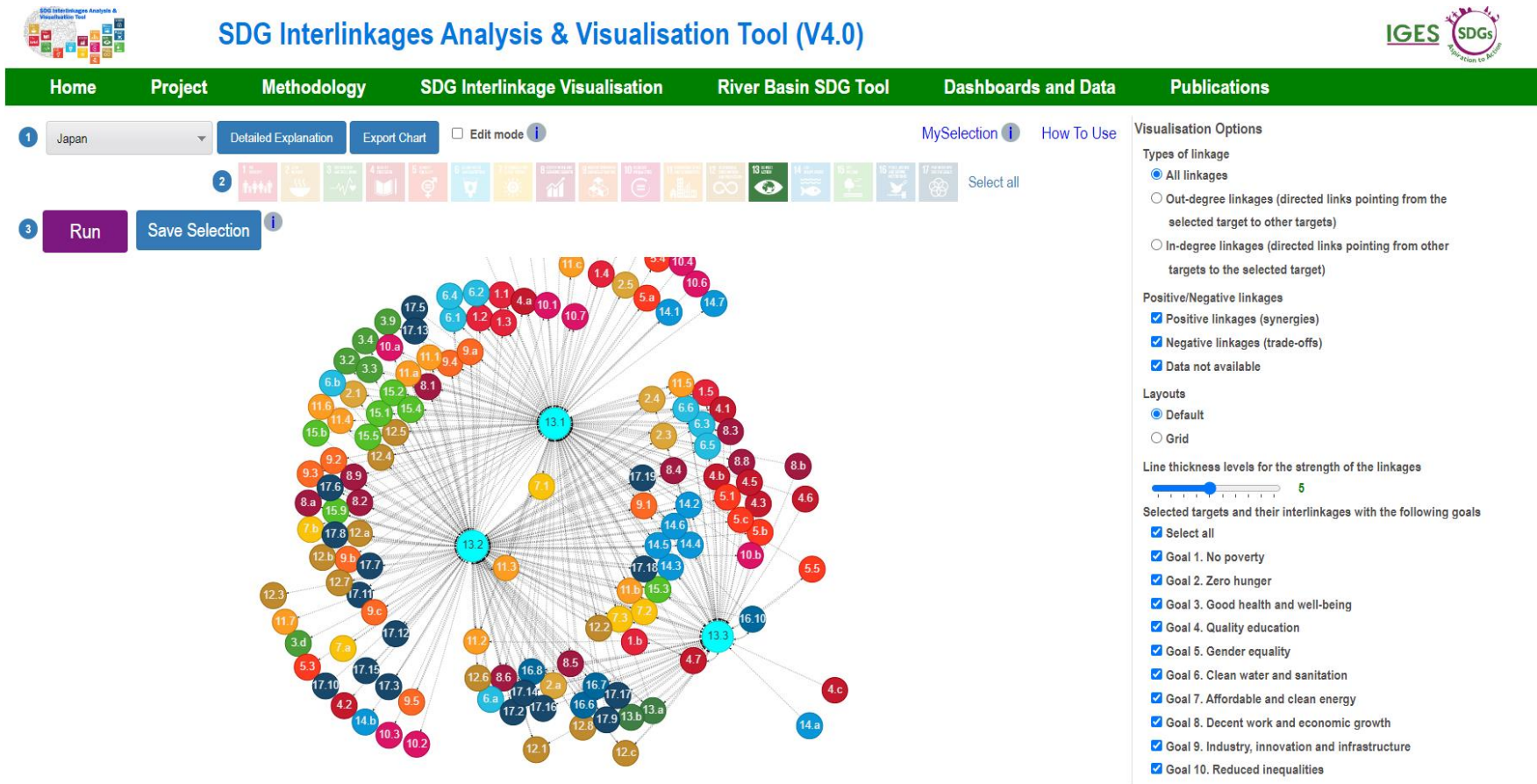
The code in parentheses indicates the corresponding SDG targets.

The edge indicates a linkage between paired terms. The width of an edge indicates the frequency of the paired terms.

Source: Zhou et al. (2022)

IGES SDG Interlinkages Analysis & Visualisation Tool (V4.0)

(<https://sdginterlinkages.iges.jp/visualisationtool.html>)

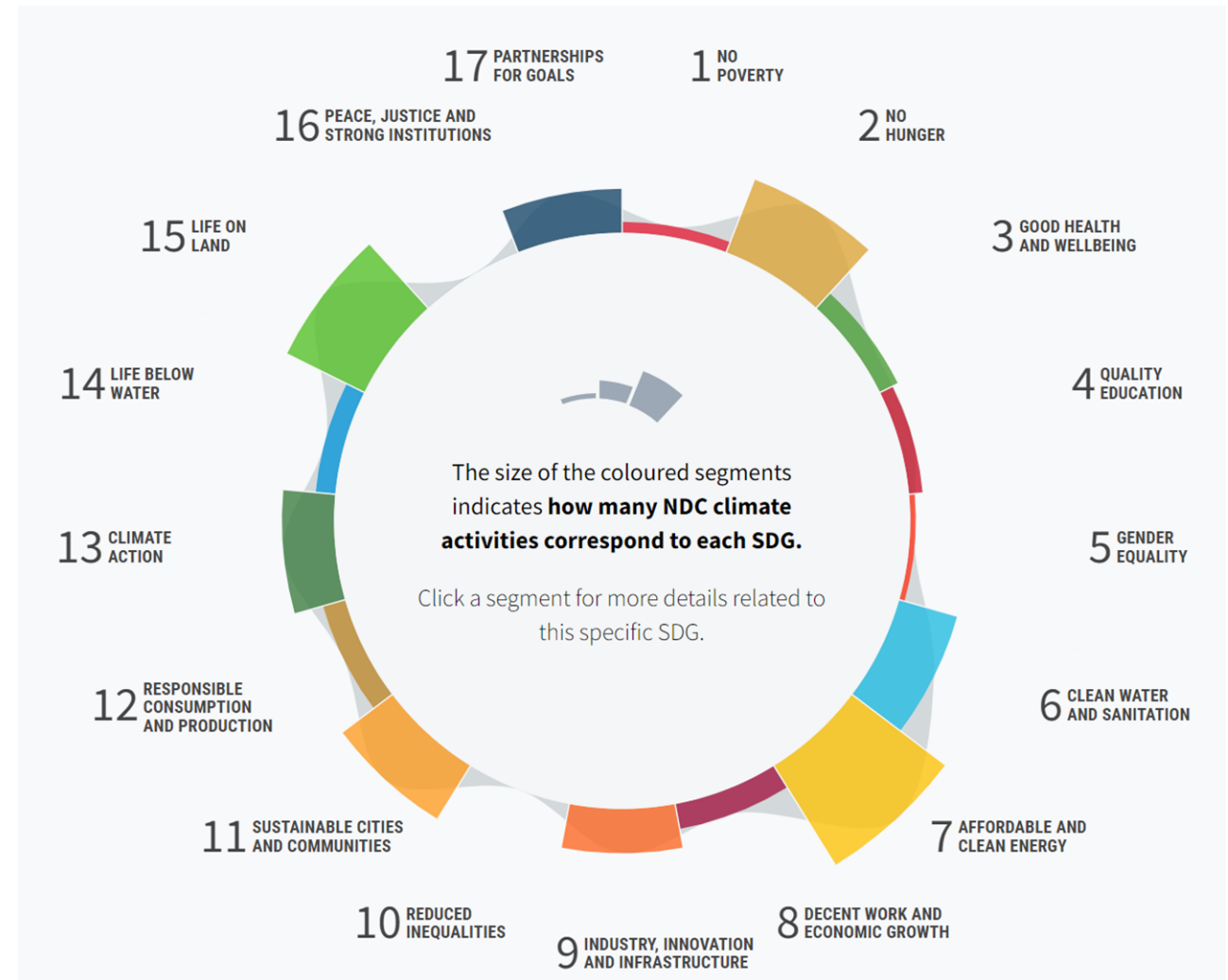


The IGES [SDG Interlinkages Analysis & Visualisation Tool](https://sdginterlinkages.iges.jp/visualisationtool.html) to help identify, quantify and visualise the interlinkages among the SDGs at the target level

Source: A snapshot taken from IGES SDG Interlinkages Analysis and Visualisation Web Tool (V4.0) (Zhou, Moinuddin and Li, 2019)

Climate actions can exert uneven impacts on SDGs

- Impacts of climate actions can be uneven on the SDGs
- Design of the climate actions matter
- DIE-SEI's NDC-SDG Connection Tool at the global level: NDCs typically prioritize economic and environmental SDGs as opposed to the social ones



Source: NDC-SDG Connection Tool (<https://klimalog.idos-research.de/ndc-sdg/>)

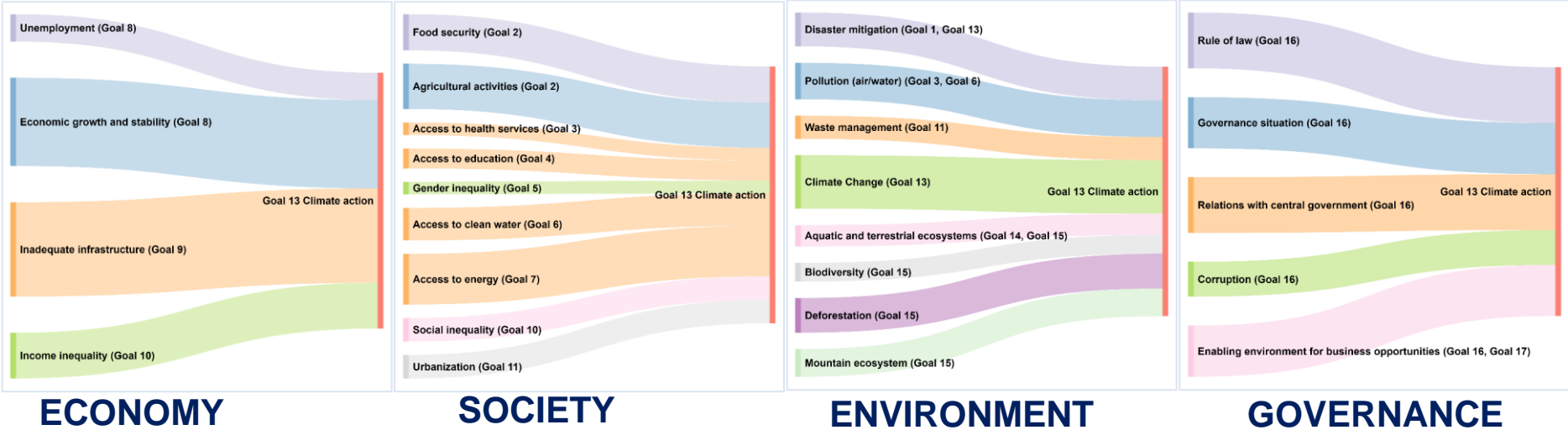
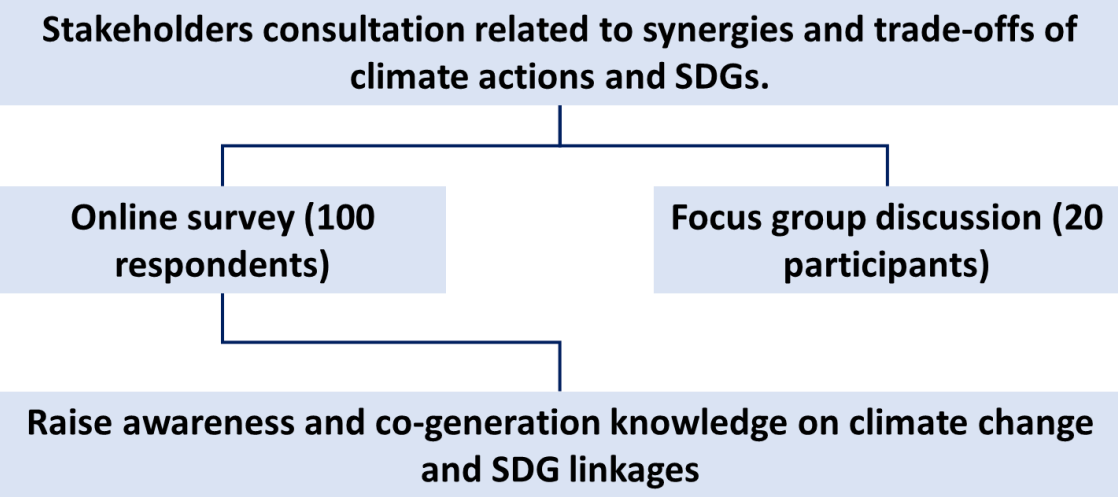
IGES case study on integrating climate actions and SDGs in West Java, Indonesia

Local authorities have the potential to respond dynamically to climate change and sustainable development issues.

- The IGES study aimed at supporting the integration of SDGs into the long-term climate mitigation strategy (LTS) development in West Java, Indonesia
 - A stakeholders consultation (survey & focused group discussion) to raise awareness and co-creation of knowledge on the synergies and trade-offs between climate actions and the SDGs.

- Why West Java
 - High concentration of economic activities, dense population
 - ↑ GHG emissions, particularly in the energy, industry & transport sectors
- West Java follows Indonesia's national commitments and aims at emissions reduction
 - Low carbon development in West Java by 2030 (11.5 MTCO₂e reduction target by 2020)
 - Provincial Low Carbon Development Strategy 2050

Stakeholders consultation in West Java, 2021



Takeaways from the stakeholder consultation study

- **Overlapping nature of sustainable development and climate actions**
 - Integration and co-development of their implementation plans needed
- **Understanding these interactions needed to integrate SDGs and climate actions**
 - Stakeholder consultations can help design the integrated approach: socio-economic and biophysical characteristics, priorities/challenges facing the region within broader national development plans.
- **Integrated approaches can bridge the gap between national and local policy processes.**
- **Important to provide support for localising the SDGs and climate actions (enabling conditions, such as strengthened governance, institutional arrangements and clarified budget lines)**
- **Empowering civil society can boost accountability for spending and policy decisions on climate and SDGs**
- **Essential knowledge gained for science-based studies, such as an in-depth SDG interlinkage analyses, which can provide important insights and support for local policy processes including the development of Voluntary Local Reviews**
- **Further, the experience gained from this stakeholder engagement activity is expected to feed into similar activities other regions, cities and provinces within and beyond Indonesia**

ご清聴ありがとうございました。
Thank you very much for your attention.

Contact: moinuddin@iges.or.jp