



NUSANTARA

Sustainable Urban Development in Nusantara Capital City, Indonesia

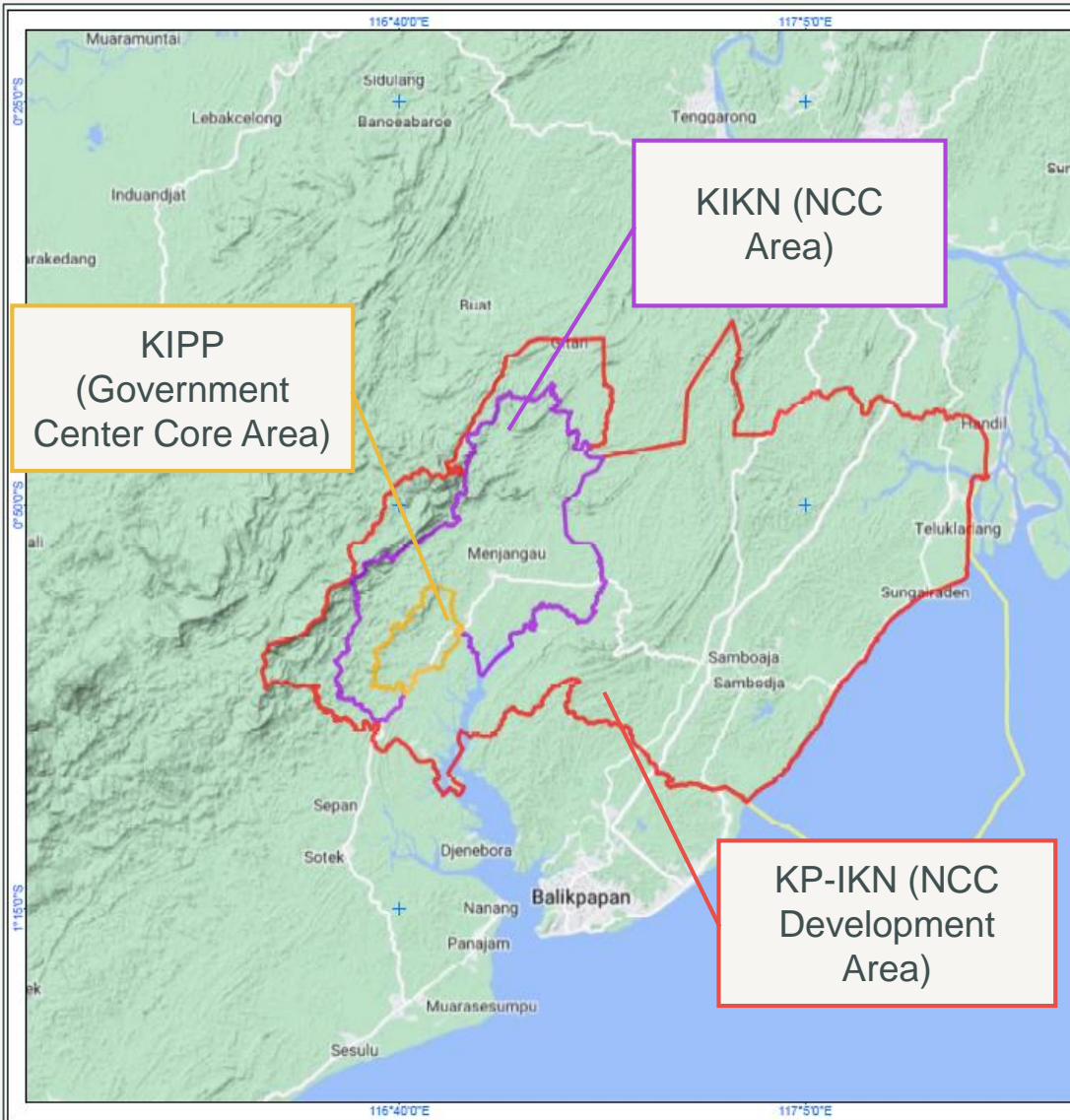
Diani Sadiawati – Nusantara
Capital City Authority

Suwon, 23 Oct 2023





Nusantara Capital City (NCC)



- NCC is in East Kalimantan Province
- NCC is divided into 3 areas
- The development is timely divided into 5 stages:

Phase 1 (2022 – 2024)

Phase 2 (2025 – 2029)

Phase 3 (2030 – 2034)

Phase 4 (2035 – 2039)

Phase 5 (2040 – 2045)

Legal Basis For NCC Development

Law No. 3 of 2022
Capital City

8 Principles of NCC

24 Key Performance
Indicator (KPI)
targets

Circular and Resilient

Align with Goal 6, 11, and 14



5

Safe and Affordable

Align with Goal 11 and 17



6

Convenience and Efficiency through Technology

Align with Goal 9 and 17



7

Economic Opportunity for All

Align with Goal 8, 10, and 16



8

In Harmony with Nature

Align with Goal 11 and 15



1

Unity in Diversity

Align with Goal 5, 11, 16



2

Connected, Active, and Accessible

Align with Goal 5 and 11



3

Low Carbon Emission

Align with Goal 7, 11, and 13



4



NCC Development and SDGs

NCC development supports the realization of SDGs based on 5Ps:

1. People
2. Place
3. Planet
4. Partnership
5. Peace

The monitoring of SDG localization in NCC development commences with the Voluntary Local Review of NCC, which is scheduled for launch in 2024.



People – Unity and Equal

Social strategies:

- Preserving assets with significant cultural value that can be accessed by the local community.
- Designing NCC as a city that fosters cultural diversity and integration.
- Establishing strong hubs for inclusive public spaces at the local, regional, and national levels.
- Ensuring equal access to essential infrastructure and diverse housing options.
- Building a climate-resilient community.



Place – Resilient and Connected



**Transportation
Networks**

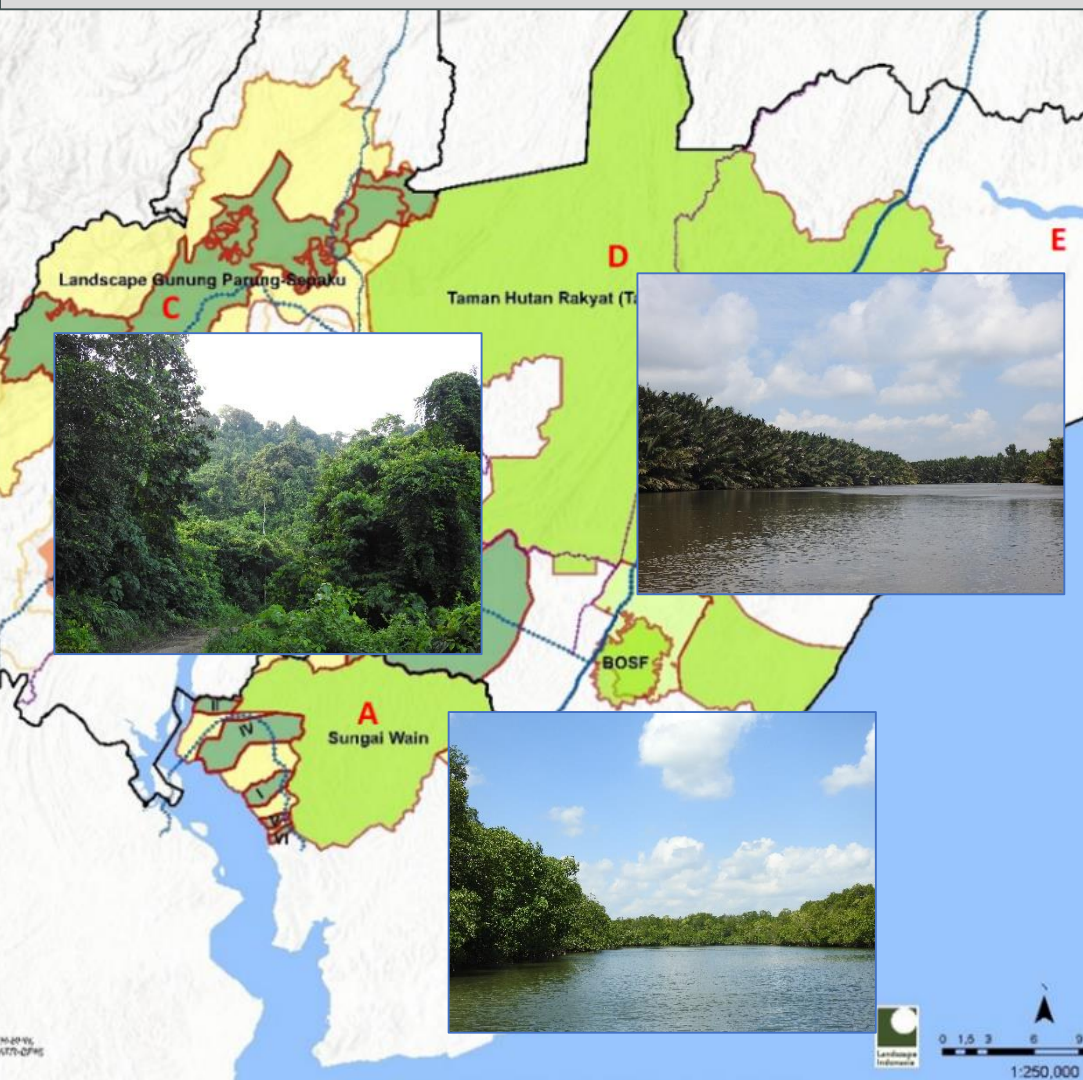
**Public
Utilities**

**Public
Facilities**

Housing

Planet – Harmony with Nature

High biodiversity areas in NCC



Plans and Policies:

1. Establishment of high conservation value and Go/No Go areas legally.
2. Develop and apply Biodiversity Master Plan.
3. Develop a scheme for the proper management of forest and concession areas.
4. Mining land reclamation policy.
5. Community involvement policy in conservation and forest areas.
6. Policy to incorporate existing and planned ex-situ conservation areas.

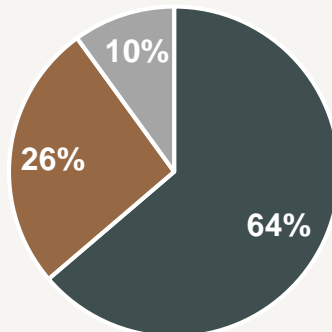
Partnership – Solidarity

Progress:

160 construction packages for the NCC development, with a combined value of **IDR 32,354 billion**. The status are:

- 102 packages have been contracted.
- 42 packages are currently in the bidding process.
- 16 packages are yet to undergo the bidding process.

■ Contracted ■ In Bidding ■ Yet to undergo bidding



Peace – Lovable City

Criteria:

Inclusion

Attachment

Delight

Identity

Empowerment



Thank You



NUSANTARA



NUSANTARA

Nusantara National Capital Authority

Jakarta

Menara Mandiri 2, 27th floor
Jalan Jenderal Sudirman 54-55
South Jakarta

East Kalimantan

Pantai Mentari Compound
Jalan Mulawarman 6
Manggar, Balikpapan

Email: investasi@ikn.go.id

WhatsApp:

+62-811-811-28-888

+62-811-811-58-888

Web: www.ikn.go.id

Instagram & Twitter: @ikn_id