



Side Event on Applying Circulating and Ecological Sphere (CES) Concept for Placing Urban Rural Linkages at the Core of Localization of Climate and Sustainable Development Actions

Welcome Remarks

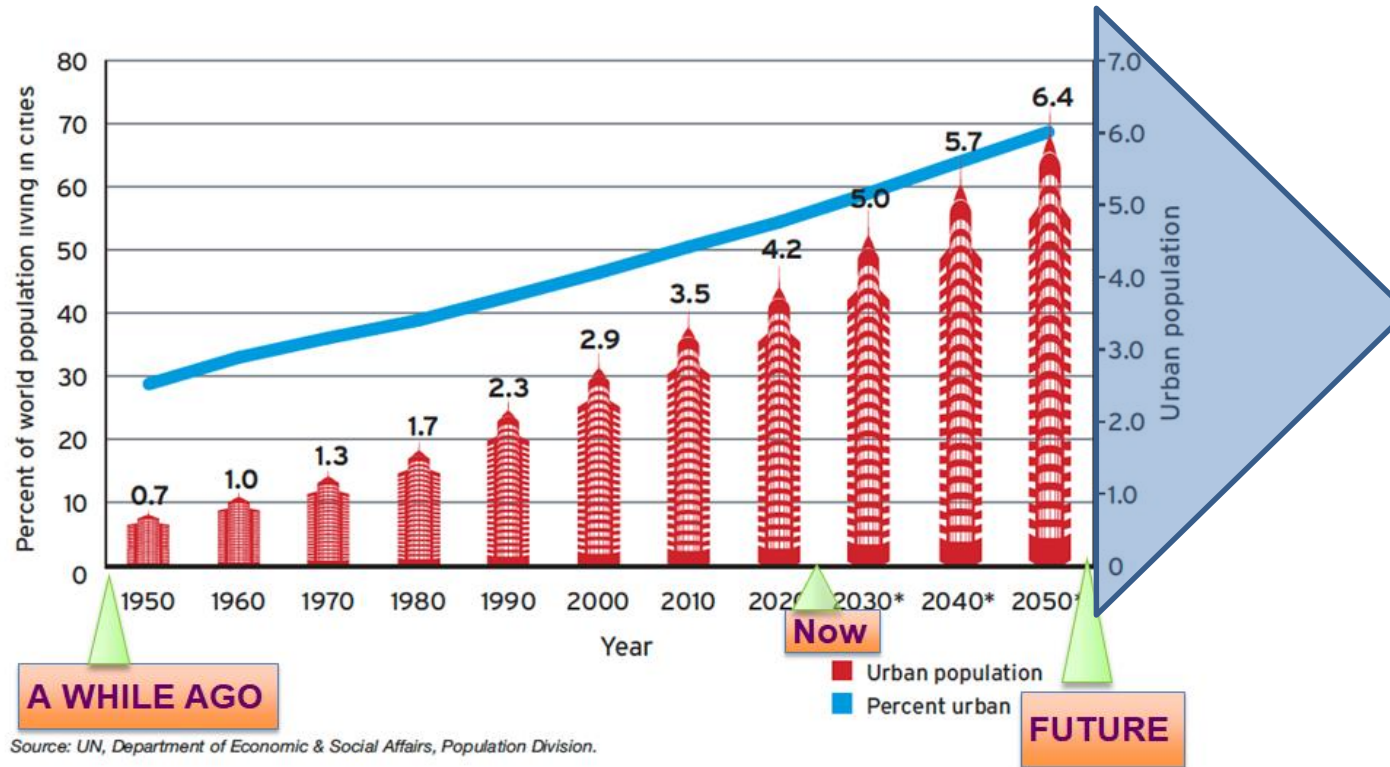
Prof. Kazuhiko TAKEUCHI

*President, Institute for Global
Environmental Strategies (IGES)*

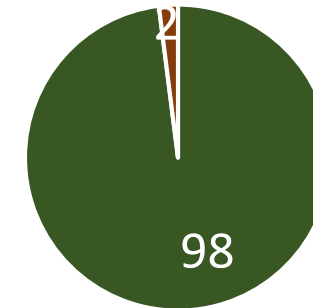
Global Agreements Related to Sustainability



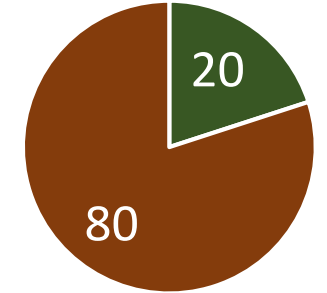
Cities on the Front Line for Achieving Global and National Goals



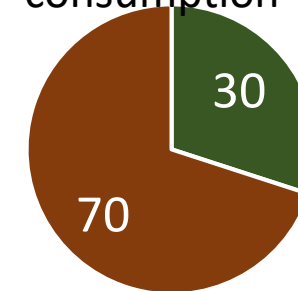
% share Land



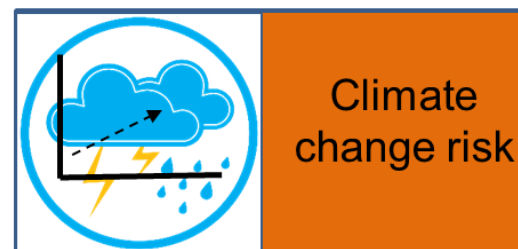
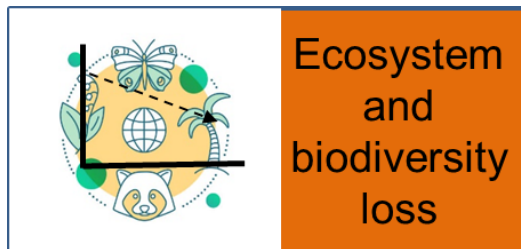
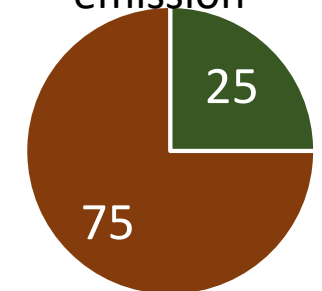
% share GDP



% share electricity consumption



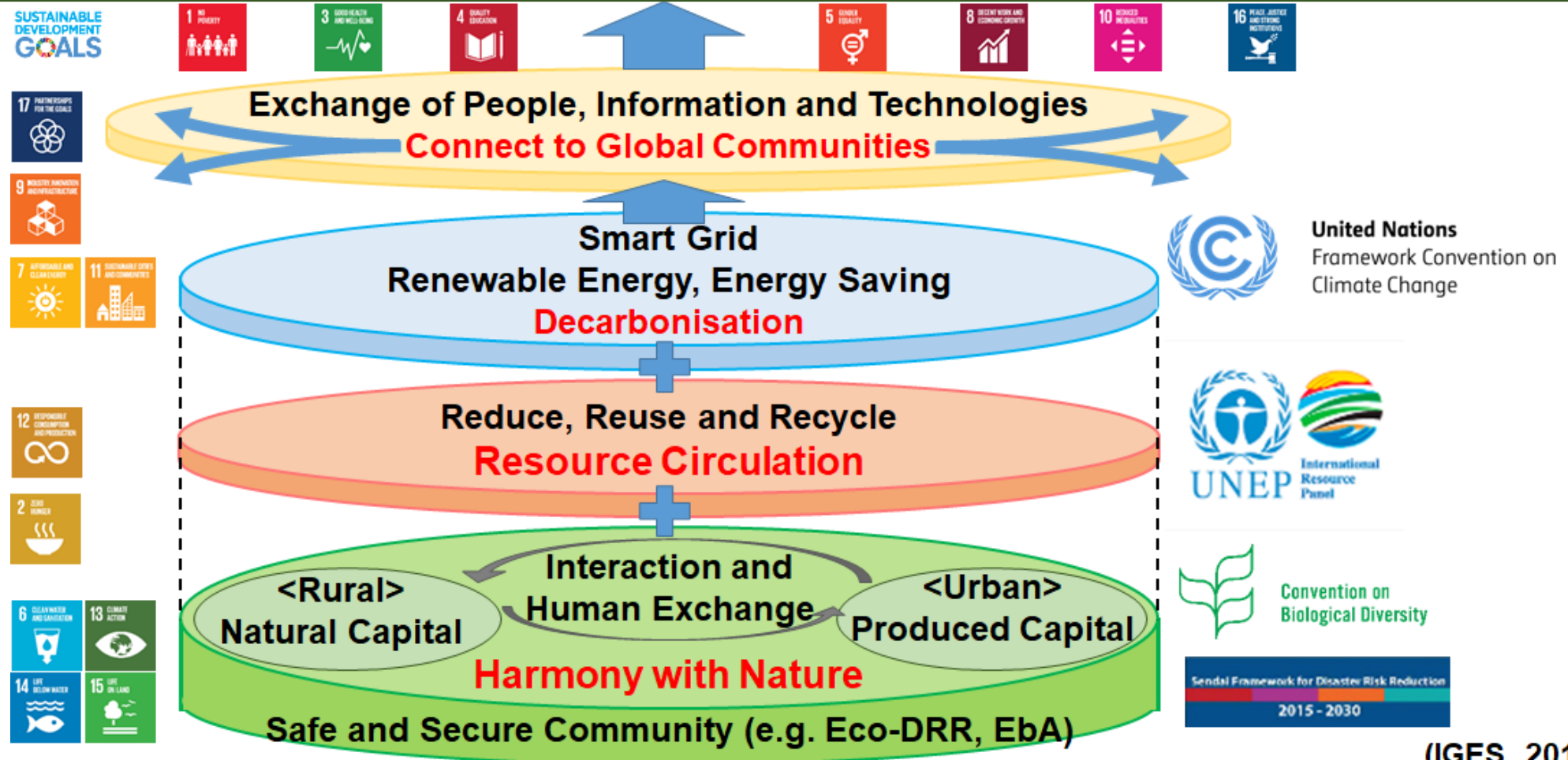
% share CO2 emission



Promoting partnerships and collective action at the urban-rural continuum
is essential to address sustainable development challenges

The Regional Circulating and Ecological Sphere (CES) An Integrated Approach to Localization of SDGs and Climate Goals

Integration of environmental, economic and social dimensions
CES to achieve **integrated solution** for local issues



(IGES, 2019)

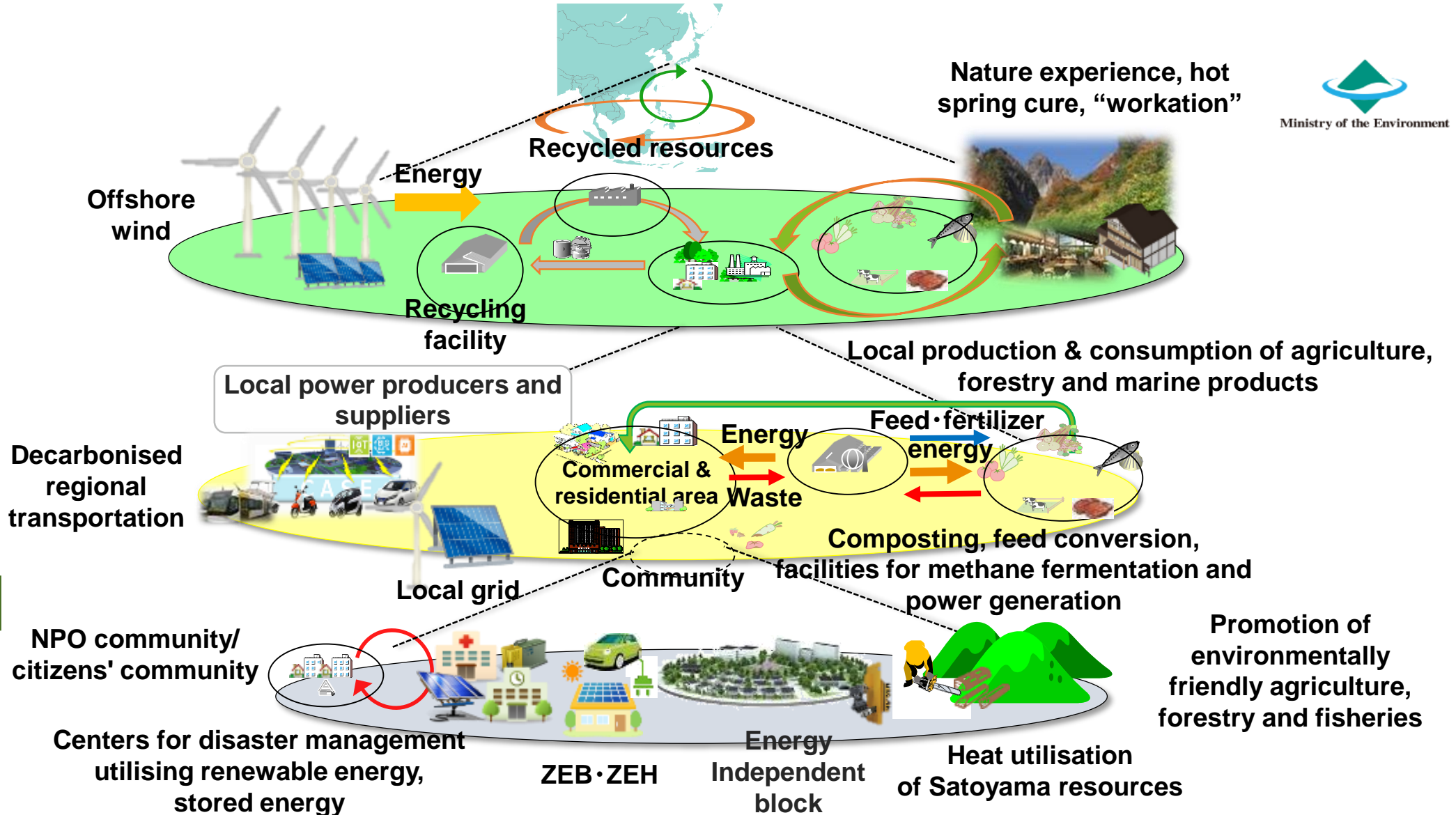
Multi-level Circulating and Ecological Sphere (CES)

Global

Regional

Local

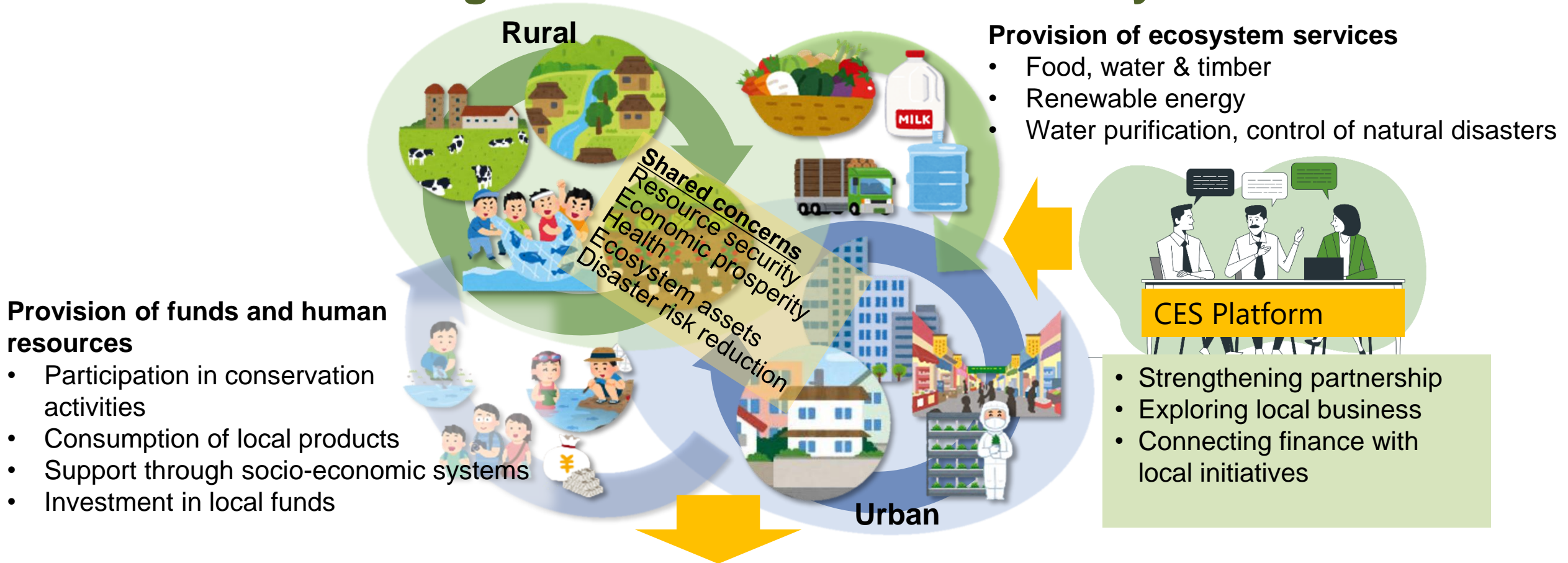
Community



Local Circulating and Ecological Sphere (CES) for Bridges the Urban-Rural Dichotomy



Ministry of the Environment



- ✓ Decentralized, self reliant and resilient society
- ✓ Integrated Improvements on environment, economy and society
- ✓ Optimise use of local resources for improvements in economic and social activities

