

# **Towards the New Normal: learning from the crisis to improve territorial governance**

**Wednesday 30<sup>th</sup> September 2020**

**Soumya Chaturvedula**

**Deputy Director-ICLEI South Asia Secreteriat**



# Introducing ICLEI-Local Governments for Sustainability



ICLEI – Local Governments for Sustainability is a global network of more than 1,750 local and regional governments committed to sustainable urban development.

We influence sustainability policy and drive local action for low emission, nature-based, equitable, resilient and circular development. Main activities:

- ❑ Support our members with technical expertise, tools, guidance.
- ❑ Facilitate city peer exchange, support networking.
- ❑ Operate global processes
- ❑ Conduct international advocacy and representation.

1750+ local and  
regional  
governments

100+ countries

300+ experts in 23  
offices worldwide

# ICLEI Around The World and Five Pathways



LOW EMISSION  
DEVELOPMENT



NATURE-BASED  
DEVELOPMENT



EQUITABLE  
AND PEOPLE-  
CENTERED  
DEVELOPMENT



RESILIENT  
DEVELOPMENT



CIRCULAR  
DEVELOPMENT

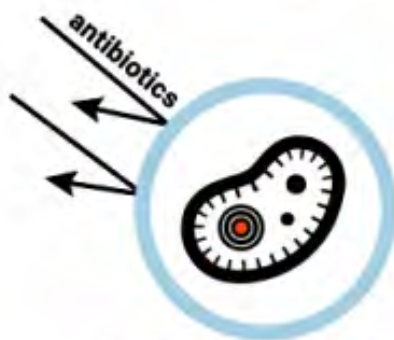
# What factors are increasing zoonosis emergence? (Diseases transmitted from animals to humans)



Deforestation  
and other land  
use changes



Illegal and  
poorly regulated  
wildlife trade



Antimicrobial  
resistance



Intensified  
agriculture and  
livestock  
production



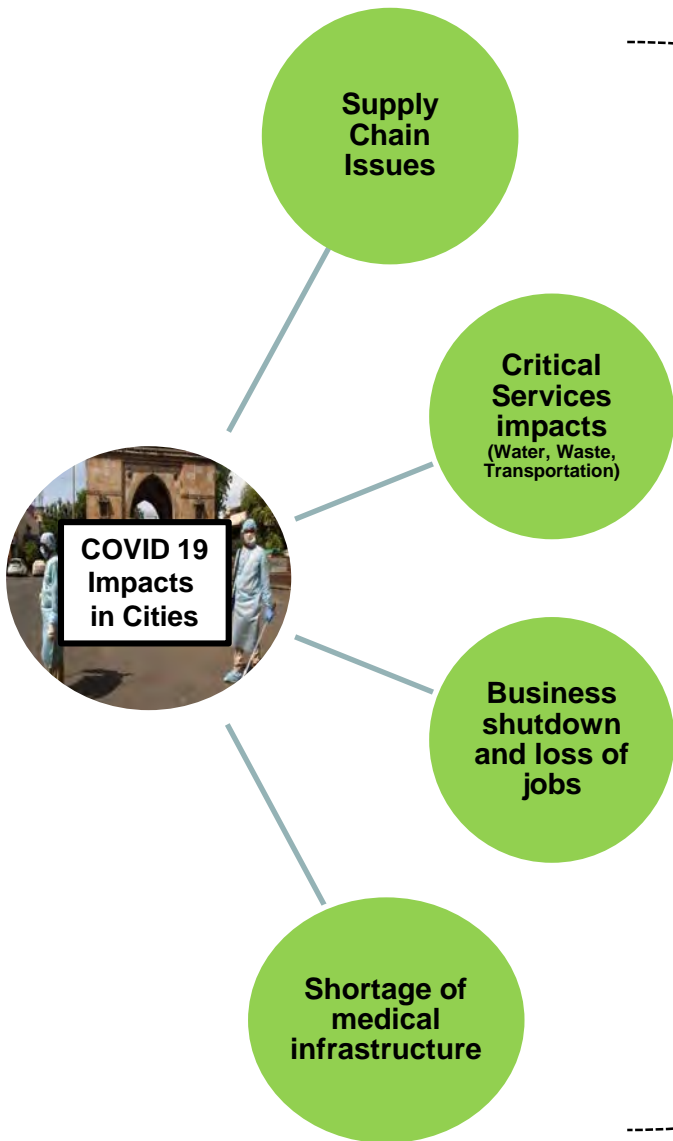
Climate change

Source: UNEP Frontiers 2016 Report

#COVID19



# COVID 19 is Challenging Cities Globally



- ❑ 4 Billion people live in Cities
- ❑ 600 Cities generate two third of global GDP

Cities are dual edged

Pandemics Are Also an Urban Planning Problem



**Bloomberg**

Coronavirus Worsens Thailand's Plastic Waste Crisis



**EcoWatch**

Philippines Again Places Cebu City Under a Stricter COVID-19 Quarantine



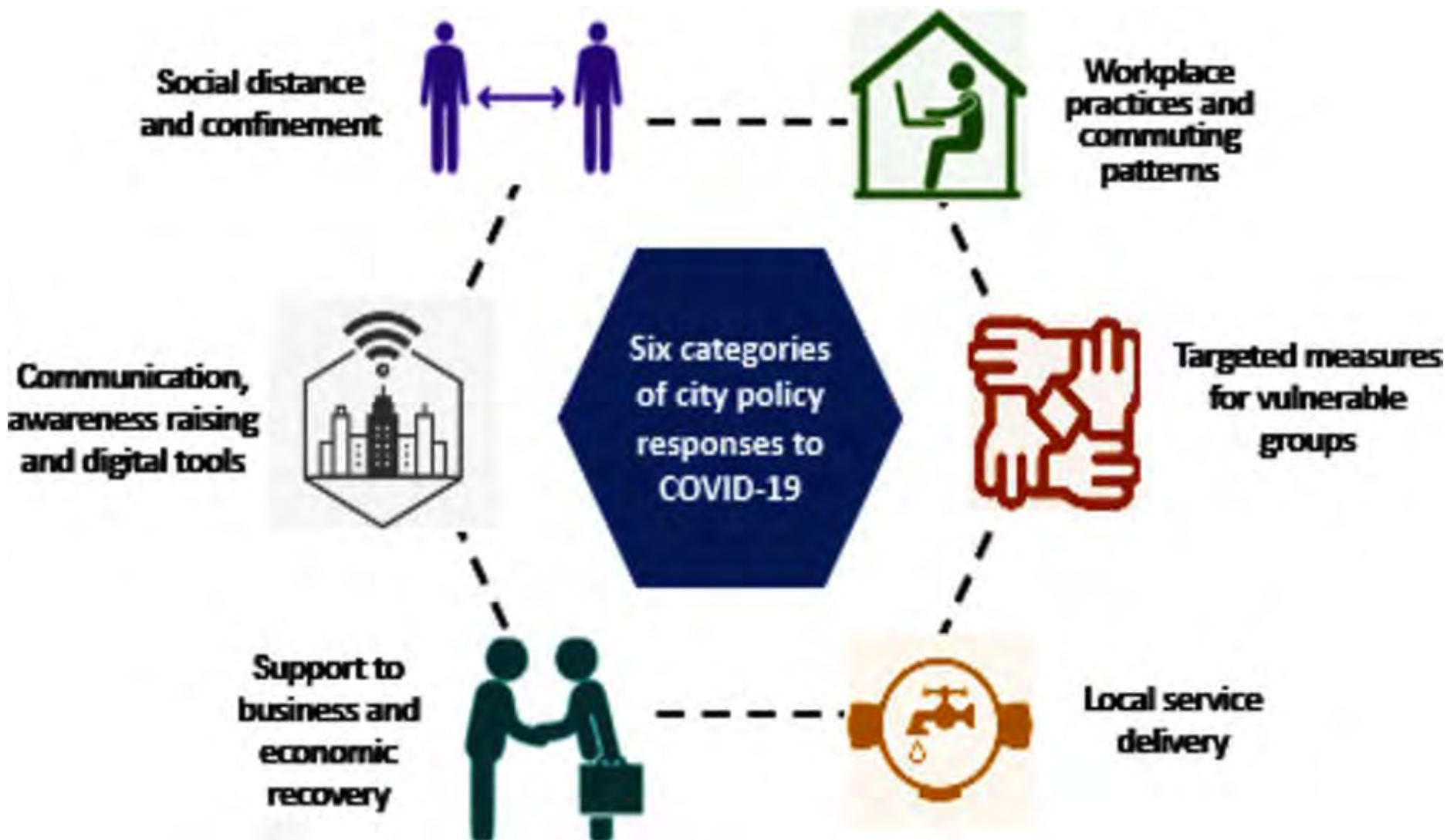
**BenarNews**

Coronavirus: India's top cities struggling to control



**THE STRAITS TIMES**

# Cities are Part of the Solution: Policy Responses



# City Services Stressed





# COVID 19 Risk on Waste Management

The Indian EXPRESS



Home / Cities / Pune / Coronavirus: No system in place for disposal of used face masks

## Coronavirus: No system in place for disposal of used face masks

In Pune and Pimpri-Chinchwad, the masks -- especially single-use ones -- are being dumped by users with their household garbage and being picked up by wastepickers unknowingly.



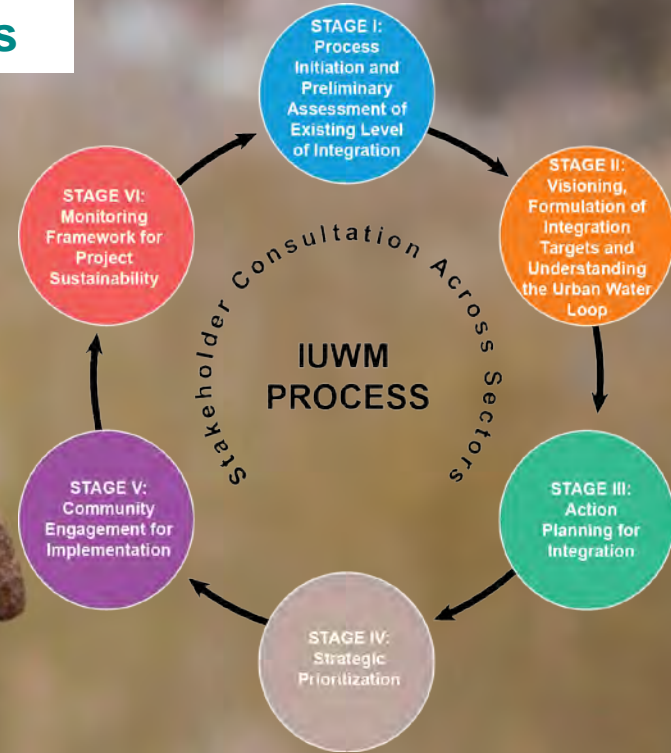
### Solutions

- ❑ Prepare city level Holistic Solid Waste Management and Contingency Action Plan
- ❑ Standard operating procedures/ protocols for waste collection, transfer and treatment



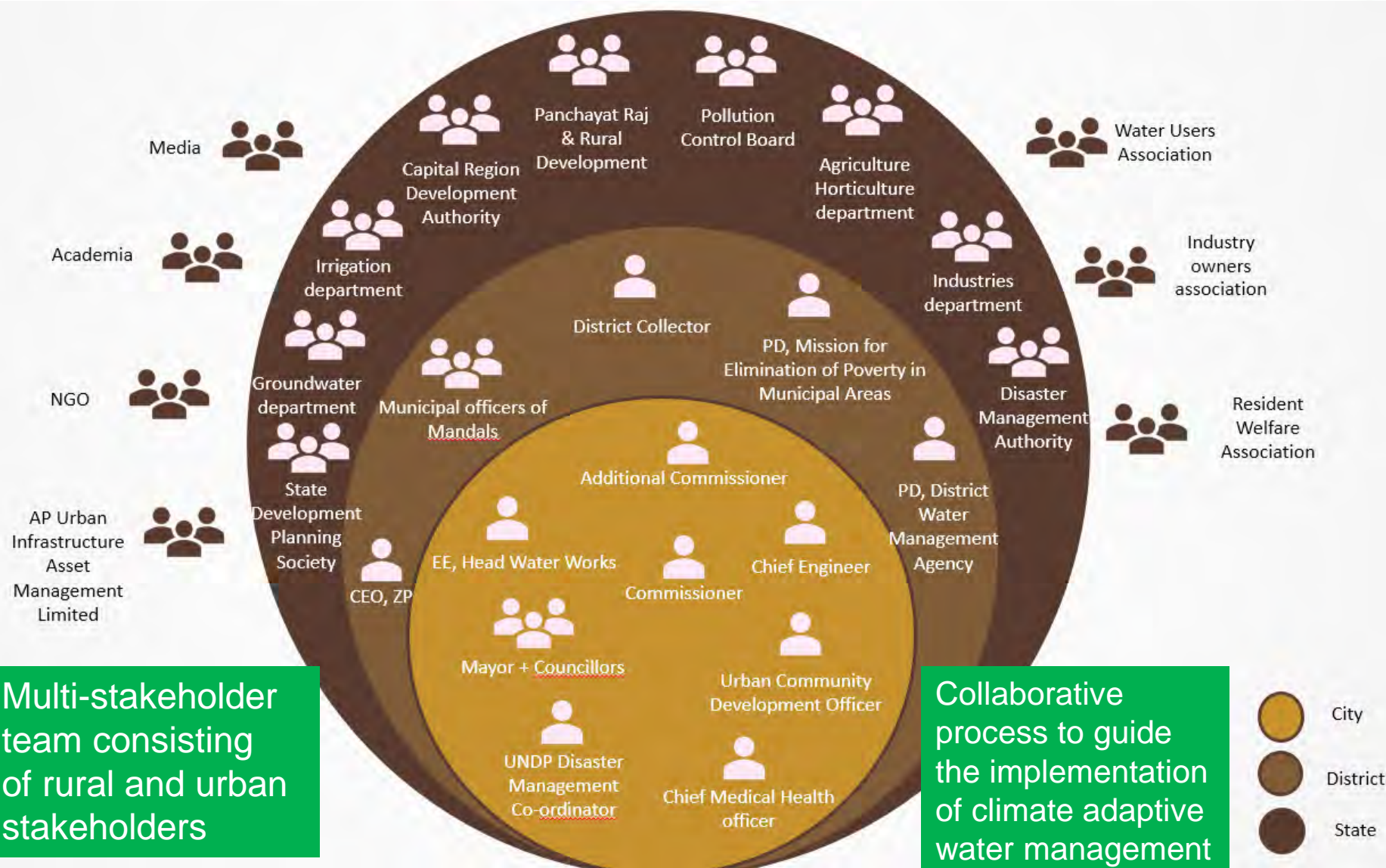
## COVID 19 Risk on Water Resources

- ❑ Health organizations advise washing hands frequently – for at least 20 seconds – to prevent outbreaks
- ❑ Additional water demand of 2.5 MLD per million people due to handwash
- ❑ 3 billion people, 40% of the world's population, lack access to basic hand- washing facilities



**Need to incorporate principles of Integrated Urban Water Management (IUWM) in policy planning**

# RURBAN Platform: Governance Framework

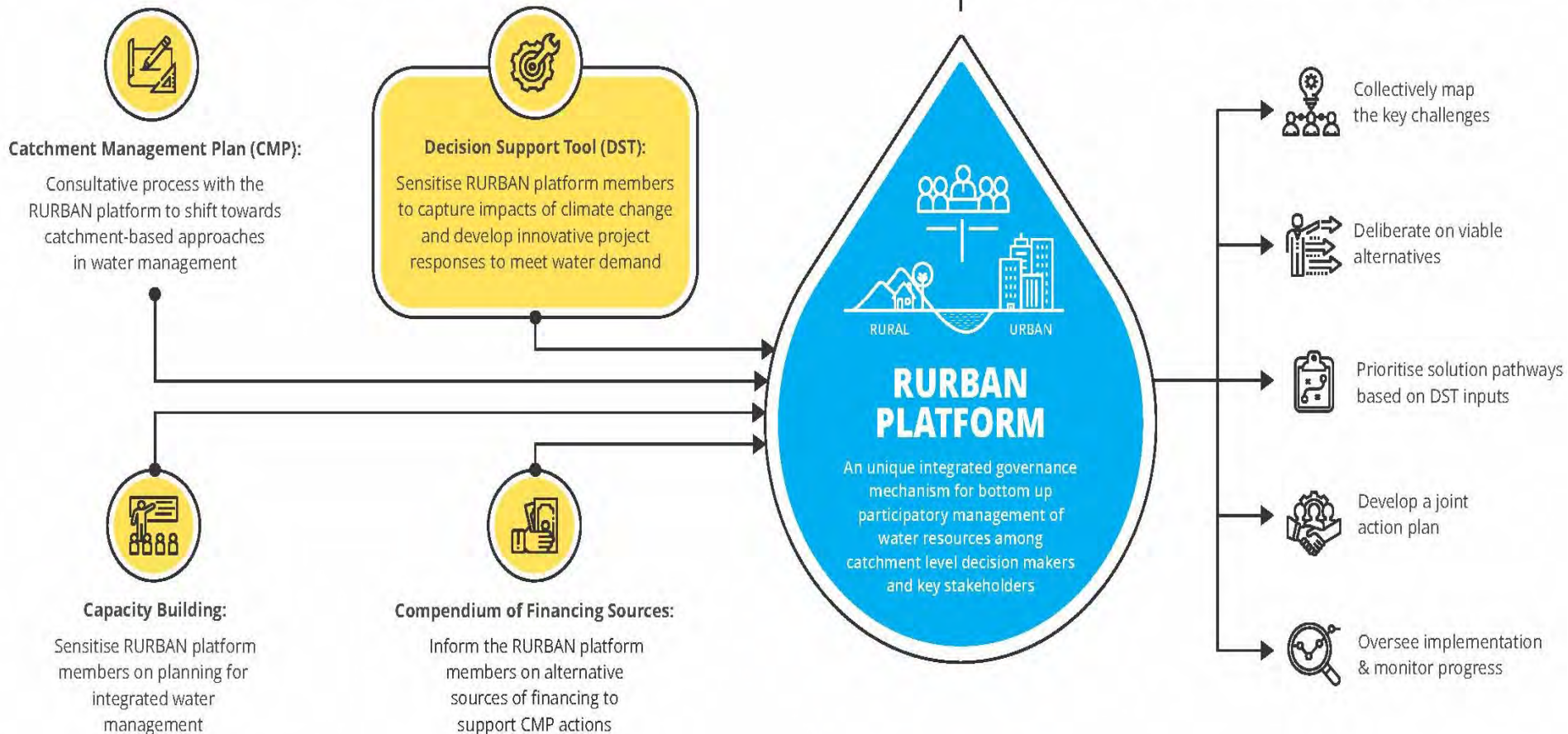




# Decision Support Tool – RURBAN Platform

## Decision making support for the RURBAN platform through the IAdapt project

## Terms of reference for the RURBAN platform as conceptualized by the IAdapt project



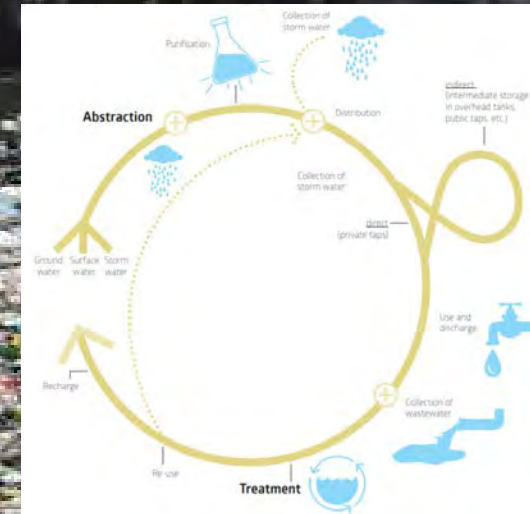


## COVID 19 Impact on Waste Water

Scientists says '**virus survive in raw sewage**, there may be an impact on health since all generated wastewater is not pumped and treated in our cities, often stagnating in low lying areas or natural drains'

More water demand due to COVID 19 lead to more generation of waste water (**Additional waste water generation of 2 MLD per million people**)

Indian cities STPs are **not operating at full capacity**



Closing Water Loop

### Solutions

- ☐ Surveillance of Virus in sewage
- ☐ Decentralized Waste Water Management Strategies



## Public Transport Risk further spread of COVID 19

**Over 80 million children at risk as Covid-19 disrupts routine vaccination**



### **Solutions**

- ☐ Comprehensive guideline/roadmap for sustainable mobility required
- ☐ Adoption of BS-VI Norms
- ☐ Promotion of Non motorized mobility
- ☐ Efficient public transport with social distancing norms

Migrant workers stand in line as they wait for transportation to a railway station  
MASCARENHAS/REUTERS

**As India's lockdown ends, exodus from cities risks spreading COVID-19 far and wide**



# Role of Nature Based Solutions in COVID 19 Crisis

Scientists says rise in zoonotic diseases is linked to loss of biodiversity and forests

## **Solutions**

- ☐ **Development of Natural Asset Map**
- ☐ **Development of Local Biodiversity Strategy and**
- ☐ **Action Plan**
- ☐ **Promoting home gardens and community urban farming**
- ☐ **Promoting city forests and open green spaces**



## Cities Best Practices on COVID 19

Seoul's quick approach of targeted testing effort was applauded all over the world



Jakarta is the first province enforcing a lockdown and formed a special "COVID-19 Response Team"

Bogotá's Mayor, Claudia Lopez took steps to manage COVID-19 before the national lockdown was declared



# Greener and cleaner: Reimagining our cities in the wake of COVID-19

Greener priorities of cities in sustainable recovery

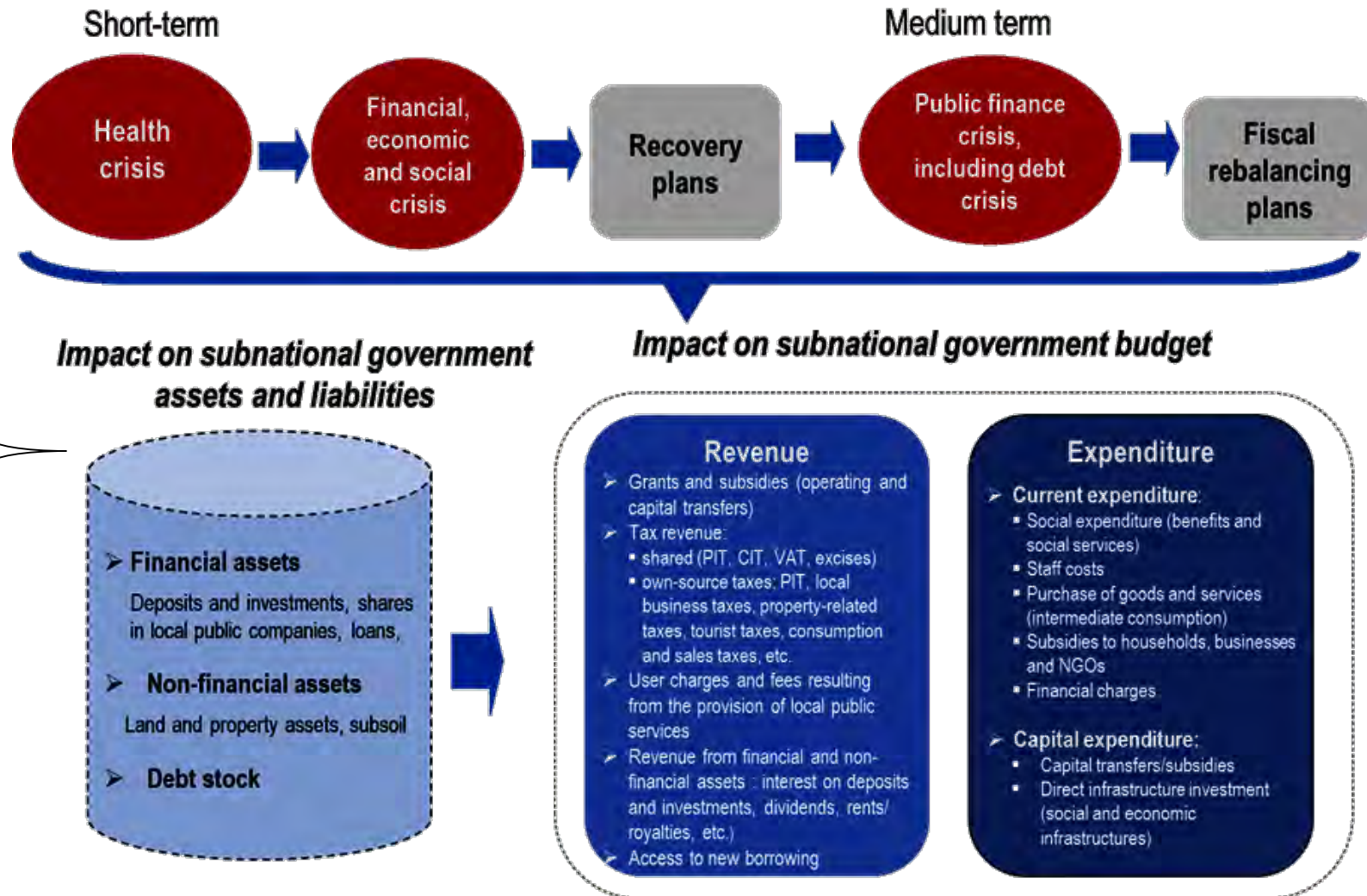
At a time when global leadership is lacking, cities and their networks are stepping up

## Example of Greener recovery

- ☐ Non motorized Infrastructure (NMT) – cycling and walking and Green public spaces(Bangkok)
- ☐ Housing the under-served (Manila)
- ☐ Car free neighbourhoods (Jakarta)
- ☐ Affordable green building (Kuala Lumpur)

# Cascading effects of COVID 19 on subnational finance

COVID 19 led to increase in expenditure (health related) and drops in tax revenue, user charges and fees due to lockdowns





# Framework for Sustainable Recovery in Cities

Flatten

Fight

Future



## Respond

Build effective response to prevent, contain and address the health issue facing the country

1. How to **monitor** the threat?
2. What initiatives are needed to **contain** spread & limit impact?
3. How do we **ensure continuity** of critical supplies & services?



## Restart

Identify how and when to restart the economy

1. When do we restart the economy?
2. How should it restart?
3. How do we govern through the uncertainty?



## Rebound

Bring the economic performance back on track through targeted initiatives

1. What measures will quickly restore confidence?
2. How do we drive **medium term growth**?
3. How can we ensure **returns on stimulus packages**, and that measures **sustainably funded**?
4. How do we address **workforce displacement**?

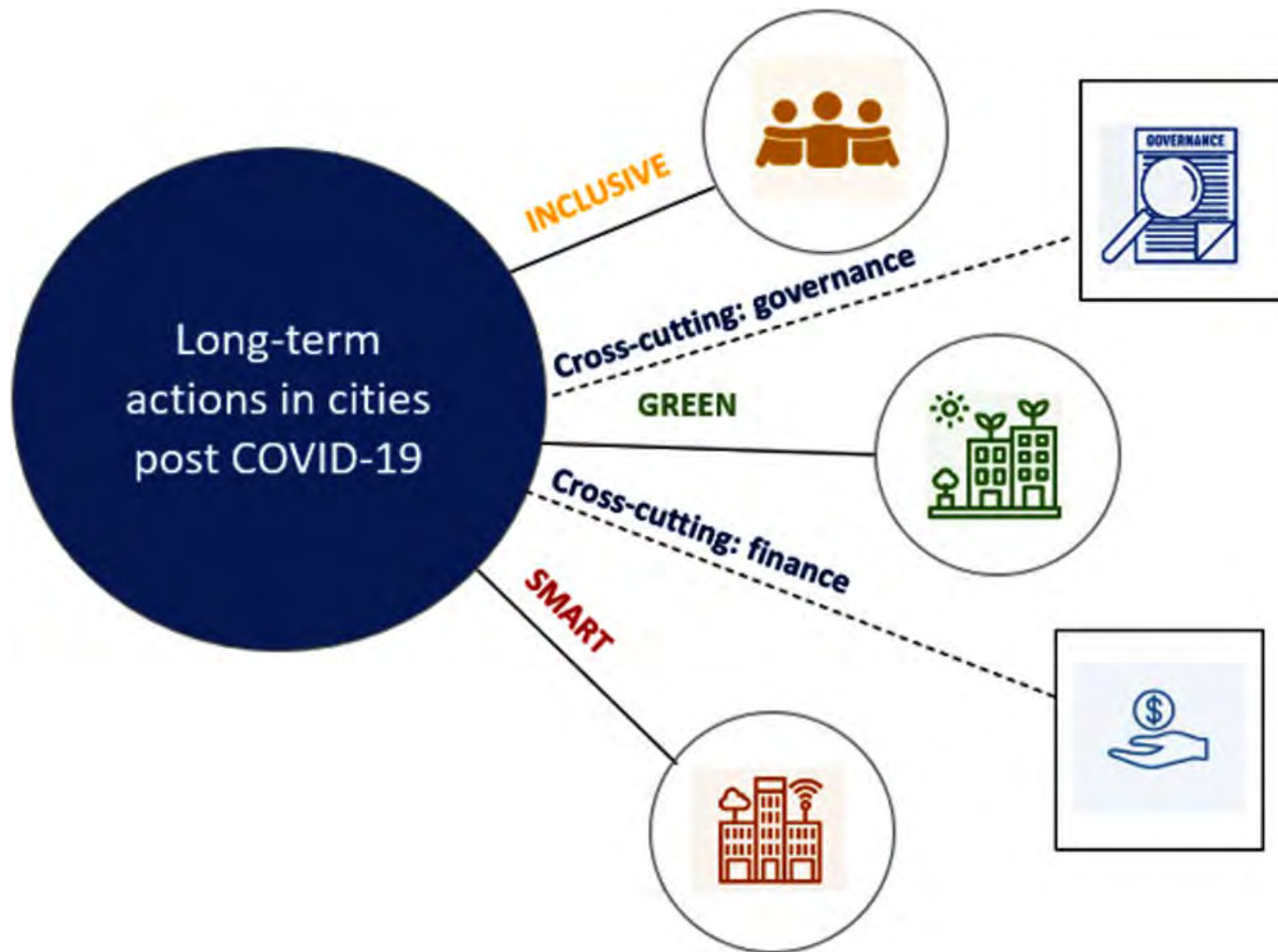


## Reimagine

Learn from the crisis to build a resilient city system, ready to tackle challenges of the future

1. What shortcomings did the crisis reveal in our operating model we need to address?
2. What major societal and world order changes should governments anticipate?
3. What are the implications for the role of government – and how should governments respond?
4. What opportunities does the crisis present for reforms to be accelerated?

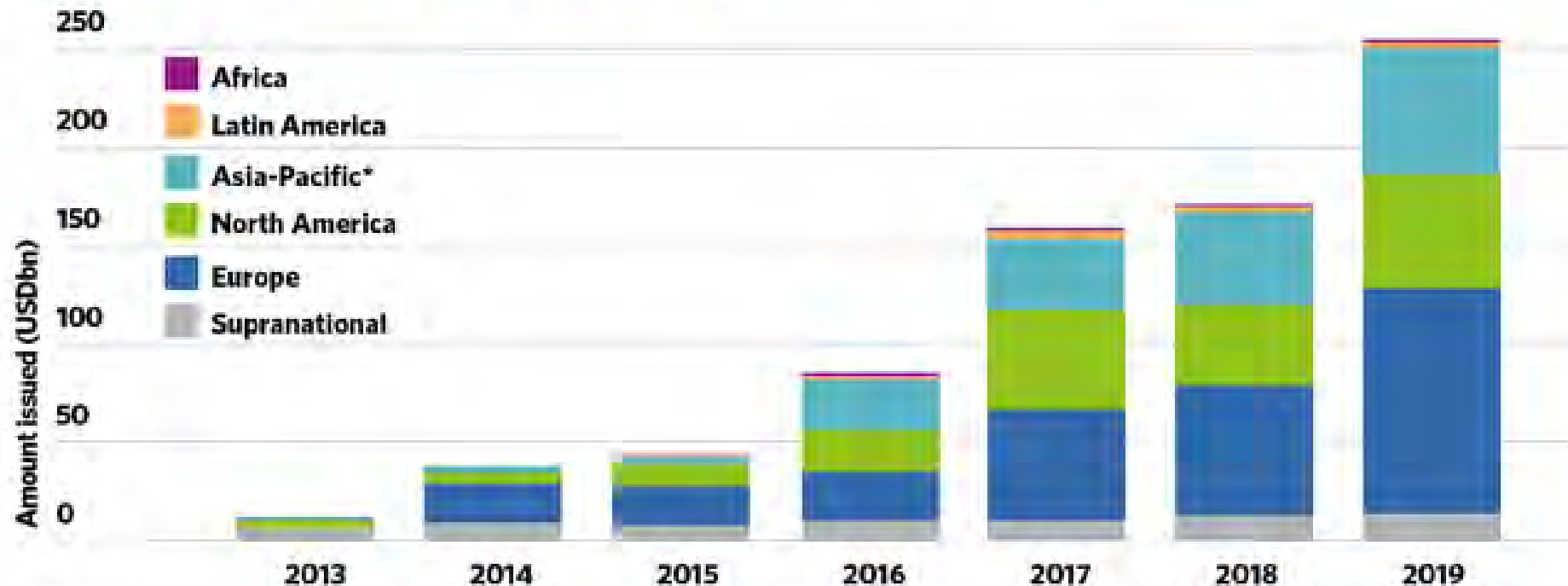
# Focus aspect of Recovery: Inclusive, Green and Smart



# Green Bond Market is Rising Fast

Global green bond and loan issuance  
increases over 50% in 2019

Climate Bonds Initiative



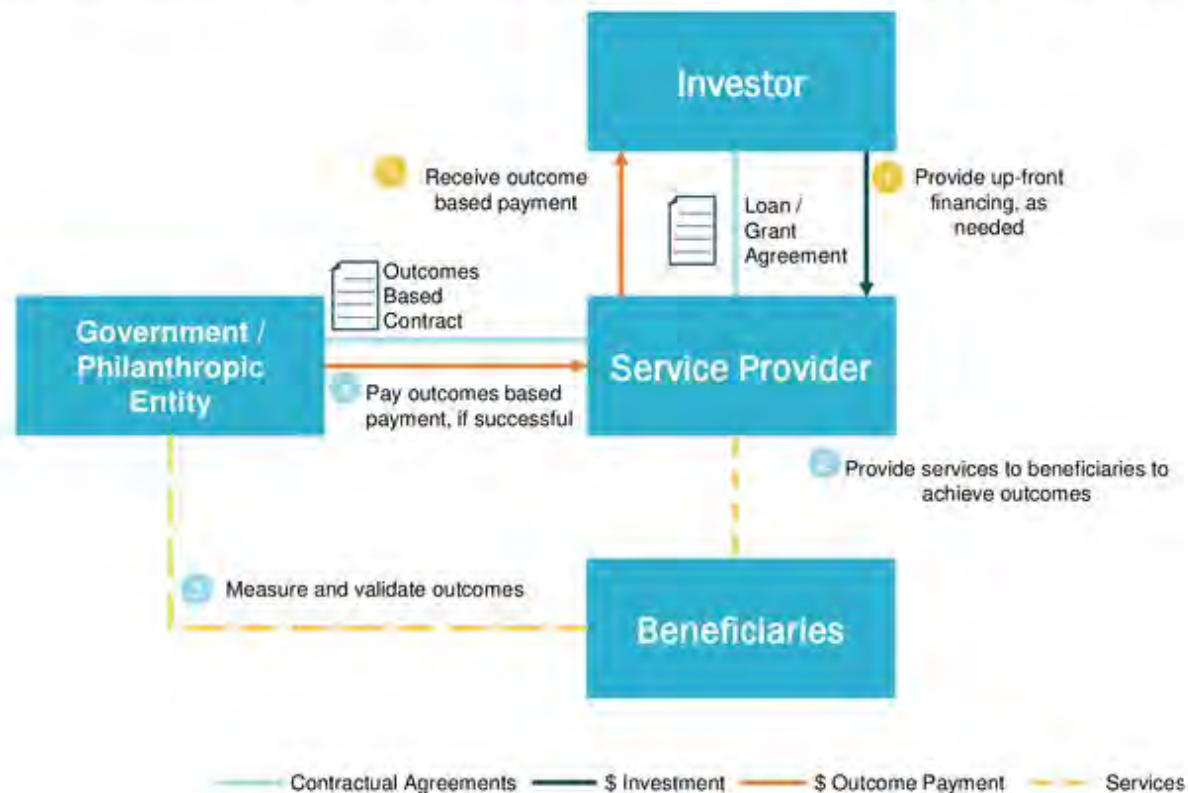
\*ASEAN issuance represents 3% of global total, 12% of Asia-Pacific in 2019



# ‘Outcomes based financing’ model for cities to lead sustainable recovery in post COVID 19

Outcomes-based Financing, or Pay for Success, is a tool that allows government to partner with nonprofit organizations and the private sector to fund programs that have preventive and long-term benefits

Cities in Philippines, Bangladesh and Cambodia are utilizing this model in health sector to implement development projects



Funds for climate projects are available and investors are ready; however, there is a shortage of bankable projects. TAP helps local and regional governments make their project idea robust, transformative and bankable.

## TAP PROCESS

### STEP 1: APPLY TO THE TAP

- Project screening - basic quality assurance
- Evaluation of completeness
- Evaluation of transformative approach



### OUTCOMES

- Well defined transformative action
- Project improvement feedback

### STEP 2: GAIN TAP APPROVAL

- Receive the TAP seal of approval from the ICLEI World Secretariat to access TAP services



### OUTCOMES

- TAP projects gain access to selected services

### STEP 3: ACCESS SERVICES ACCESS IMPLEMENTATION AND FINANCE SUPPORT

TAP projects bearing the TAP seal can be selected for capacity building and technical assistance. They also gain access to investors, PPFs and financial service providers.



Contact: [tap@iclei.org](mailto:tap@iclei.org)

# Thank You !



**Soumya Chhaturvedula**  
**Deputy Director**  
**ICLEI South Asia Secretariat**

**E-Mail:** [soumya.chaturvedula@iclei.org](mailto:soumya.chaturvedula@iclei.org), [iclei-southasia@iclei.org](mailto:iclei-southasia@iclei.org)

**Websites:** [www.iclei.org](http://www.iclei.org), [www.southasia.iclei.org](http://www.southasia.iclei.org)