

Importance of Resilient and Sustainable Recovery from COVID-19 and Integrated Approaches to Global Challenges

Prof. TAKEUCHI Kazuhiko

President, Institute for Global Environmental Strategies (IGES)

Chair of the Central Environmental Council, Government of Japan

30 September 2020

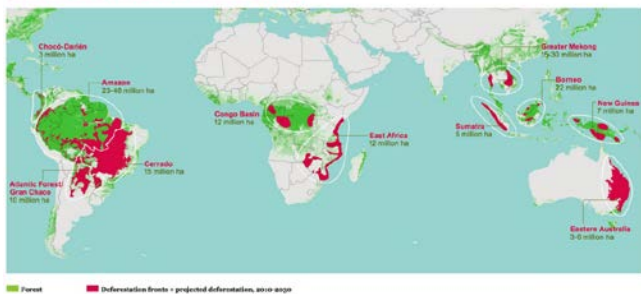
Report on the United Nations High-Level Political Forum (HLPF) 2020:
Japan's Role in Recover from the COVID-19 Pandemic and Achievement
of the SDGs



COVID-19 Pandemic and Unsustainable Development

Rapid Deforestation

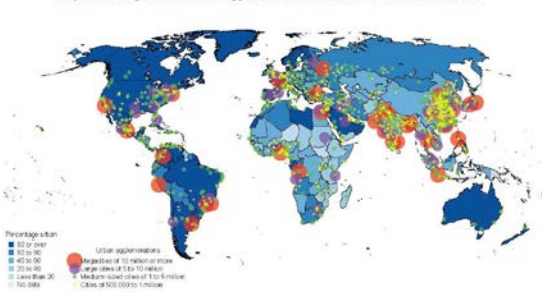
MAP OF DEFORESTATION FRONTS



Mongabay News 27 Apr 2015

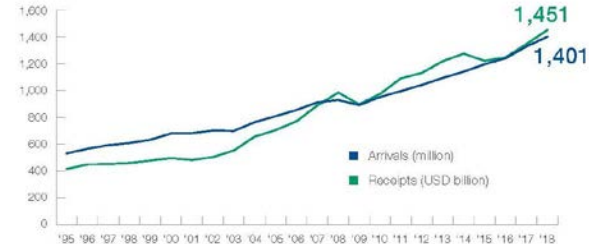
Rapid Urbanization

Map 1. Percentage urban and urban agglomerations with 500,000 inhabitants or more, 2018



UN World Urbanization Prospects 2018

Massive Movement of People



International tourist arrivals (million) and tourism receipts (USD billion)
Source: World Tourism Organization (UNWTO), July 2019.

UNWTO Tourism Highlights 2019

Same unsustainable paths accelerate

Biodiversity Loss

Climate Change

Disasters

Infectious Diseases

Global Agreements related to Sustainability



2030 Agenda
and SDGs



PARIS2015
ON CLIMATE CHANGE AGREEMENT
COP21-CMP11

Paris Agreement
(UNFCCC)



Convention on
Biological Diversity

Aichi Biodiversity
Targets & Post-2020
Biodiversity
Framework (CBD)



Sendai
Framework for
Disaster Risk
Reduction

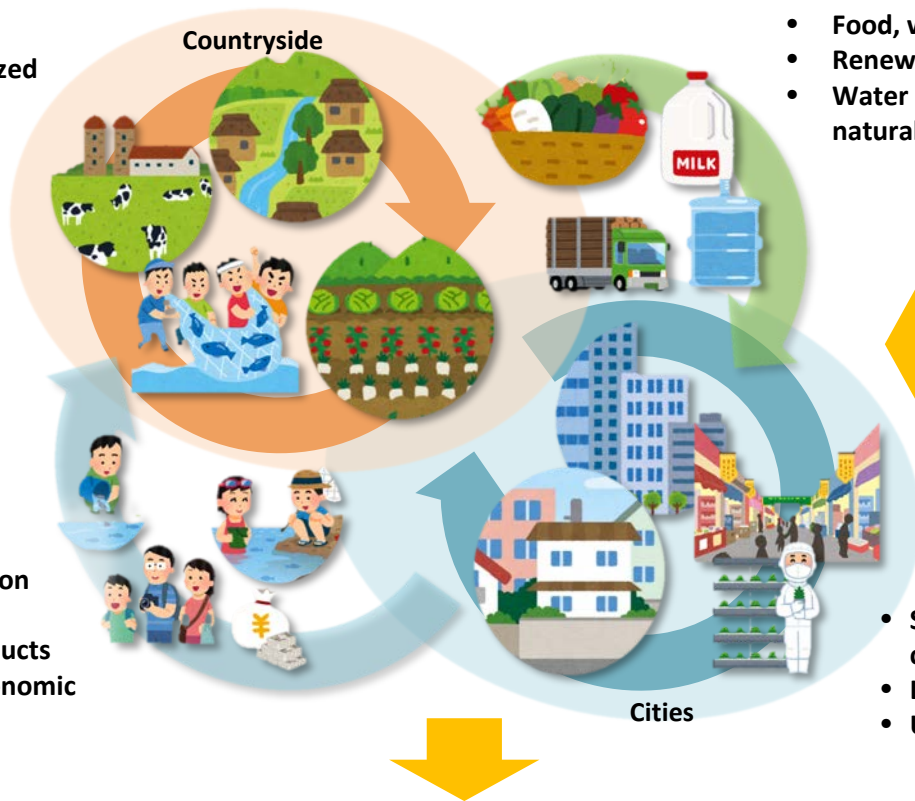
Need to realise
**transformative
change** in the
Post-COVID19

Need to take
integrated actions
towards new
sustainable society

Need to be
**implemented
locally,
incorporated into
lifestyles**

Circulating and Ecological Sphere (CES) (Localization of SDGs)

- Self-reliant and decentralized community
- Local production & consumption
- Use of renewable energy



Provision of ecosystem services

- Food, water & timber
- Renewable energy
- Water purification, control of natural disasters

- Cross-sectoral cooperation in policymaking and planning including climate policy
- Facilitate sound cycle of funds and human resources

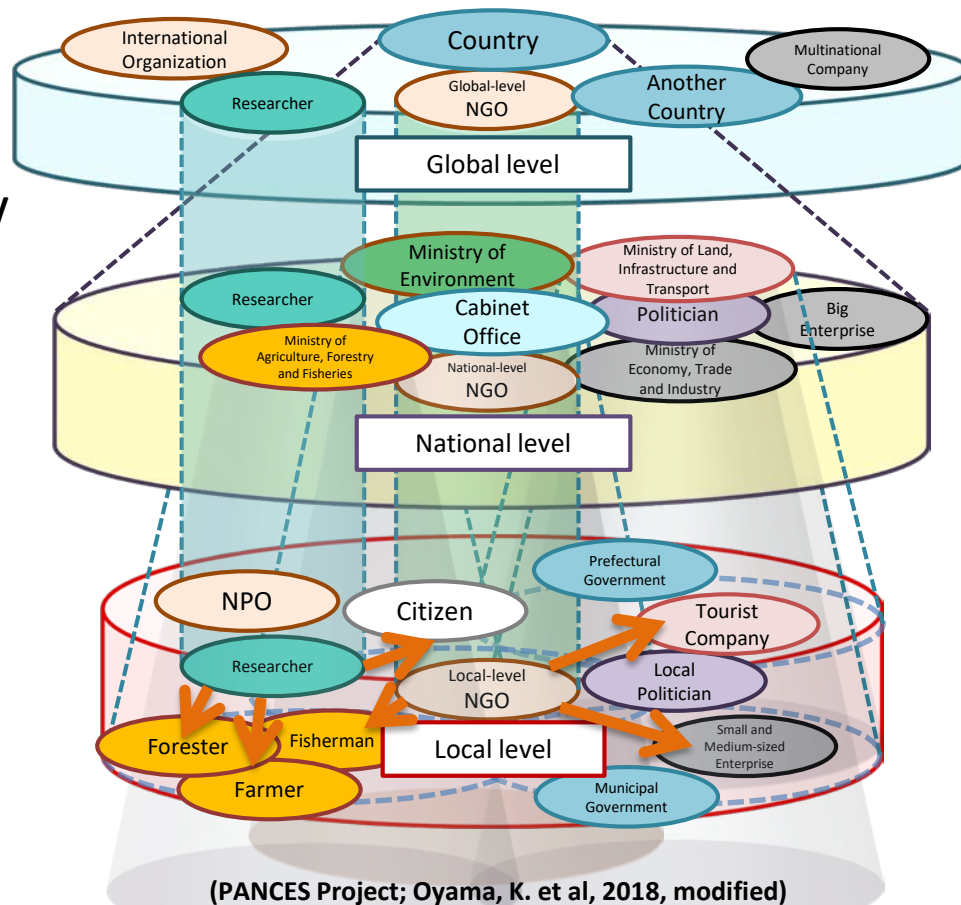
Provision of funds and human resources

- Participation in conservation activities
- Consumption of local products
- Support through socio-economic systems
- Investment in local funds

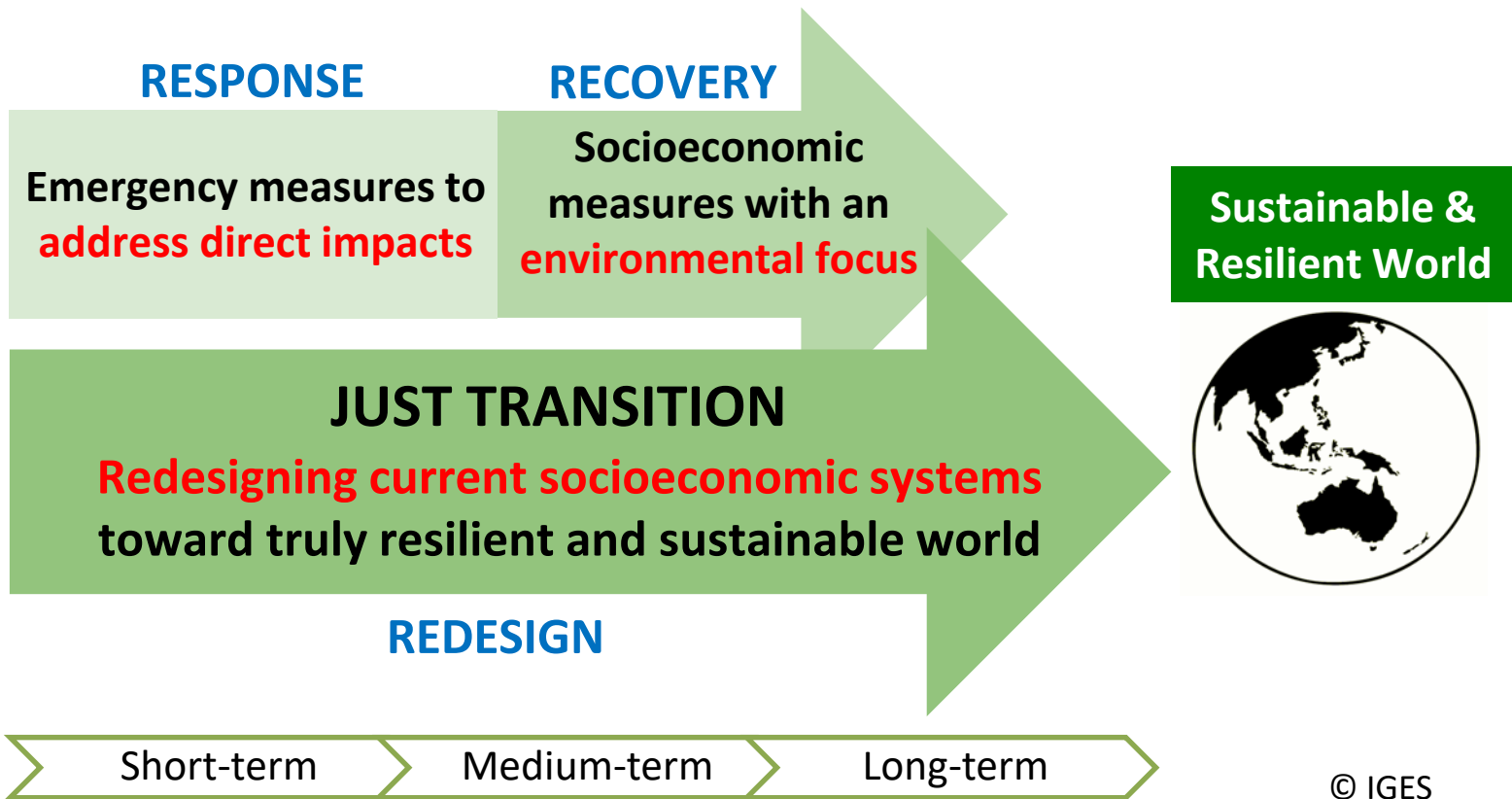
- Self-reliant and decentralized community
- Local production & consumption
- Use of renewable energy

Multi-level Nested Governance of Natural Capital

- ◆ Multi-level Governance is a **policymaking system** that recognizes that natural capital does not fit neatly into administrative levels and boundaries
- ◆ Sustainably managing this capital requires coalitions of policymakers and environmental experts to **work across levels and boundaries**
- ◆ These coalitions can ensure policies reflect **local conditions as well as recent scientific assessments** (such as GBO and IPBES)



The Post COVID-19 “3Rs Framework” (Response-Recovery-Redesign)



Case 1 Waste Management during the Pandemic

Responding to the crisis

- ◆ Increasing waste from households & **healthcare sector**
- ◆ WM workers at risk
- ◆ Suspended recycling



Hit countries with **weak WM systems**

Recovery for more effective WM service

- ◆ **Mapping existing systems:** segregation, transportation, treatment, final disposal
- ◆ **Avoid risks** due to service interruptions
- ◆ **Continue reuse & recycle** practices
- ◆ Protect lives & livelihoods
- ◆ Address gender aspects

Good Governance for Effective, Resilient & Inclusive WM systems

- ◆ **Multi-sector/Multi-level cooperation**
- ◆ Review WM services
- ◆ Policy development & implementation



(UNEP & IGES, August 2020)

Case 2

“Adaptive Recovery” from Climate Disasters

Responding to the crisis

- ◆ Emergency **humanitarian relief**
- ◆ Establishment and management of **evacuation centers** and **provisional housings**
- ◆ Removal of **disaster debris**

Recovery for more disaster-resilient society

- ◆ Flexible adaptation by using **ecosystem services** (EbA, Eco-DRR)
- ◆ Improvement of **infrastructure** and promotion of **effective land use**

Redesign the future of resilient society

- ◆ **Multi-sector/Multi-level cooperation** (*ko-jo, kyo-jo, ji-jyo*)
- ◆ Address **various other threats**, such as infectious diseases, heat stroke and earthquakes
- ◆ Promotion of **pre-disaster reconstruction** efforts



Disaster prevention forests in Kesennuma Oshima, Japan

“**Adaptive Recovery**” is the new concept introduced by Japan. We must respond to disasters by implementing resilient measures including climate change adaptation.