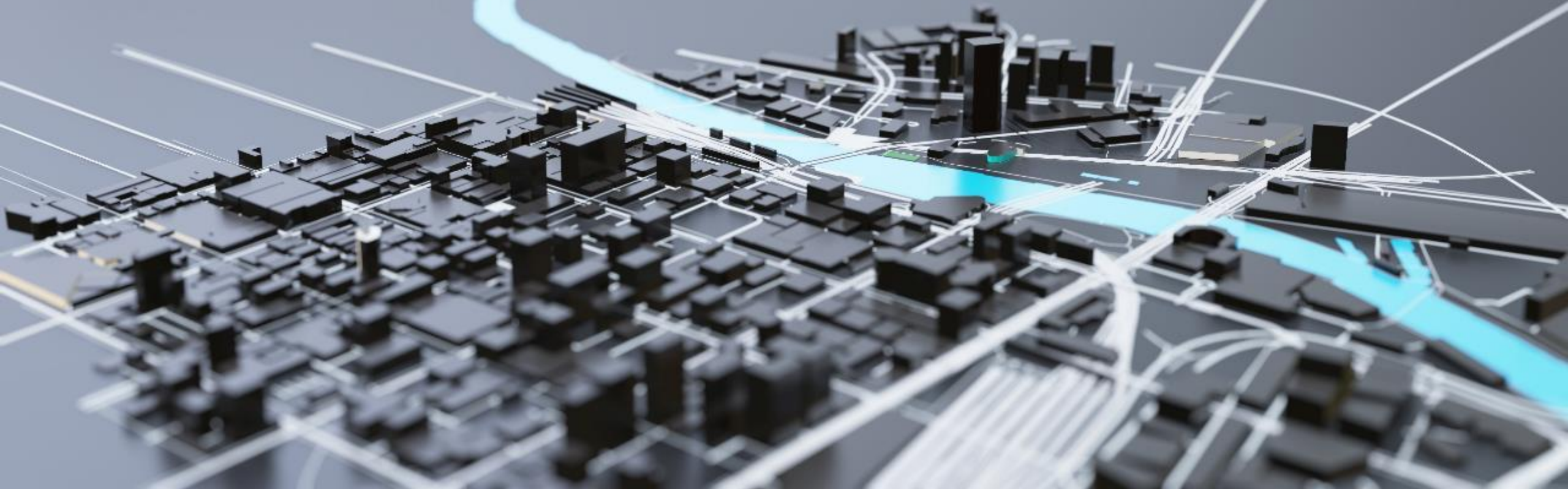


The Mississippi River
Cities and Towns
Initiative

MRC TI



MRCTI Executive Committee



Jim Strickland
Memphis, TN
Co-Chair



Errick D. Simmons
Greenville, MS
Co-Chair



Melvin Carter
St. Paul, MN



Mitch Reynolds
La Crosse, WI



Scott Madison
Clinton, IA



Robert Eastern
East St. Louis, IL



Phil Stang



Cliff Berry



Kevin Smith



George Flaags



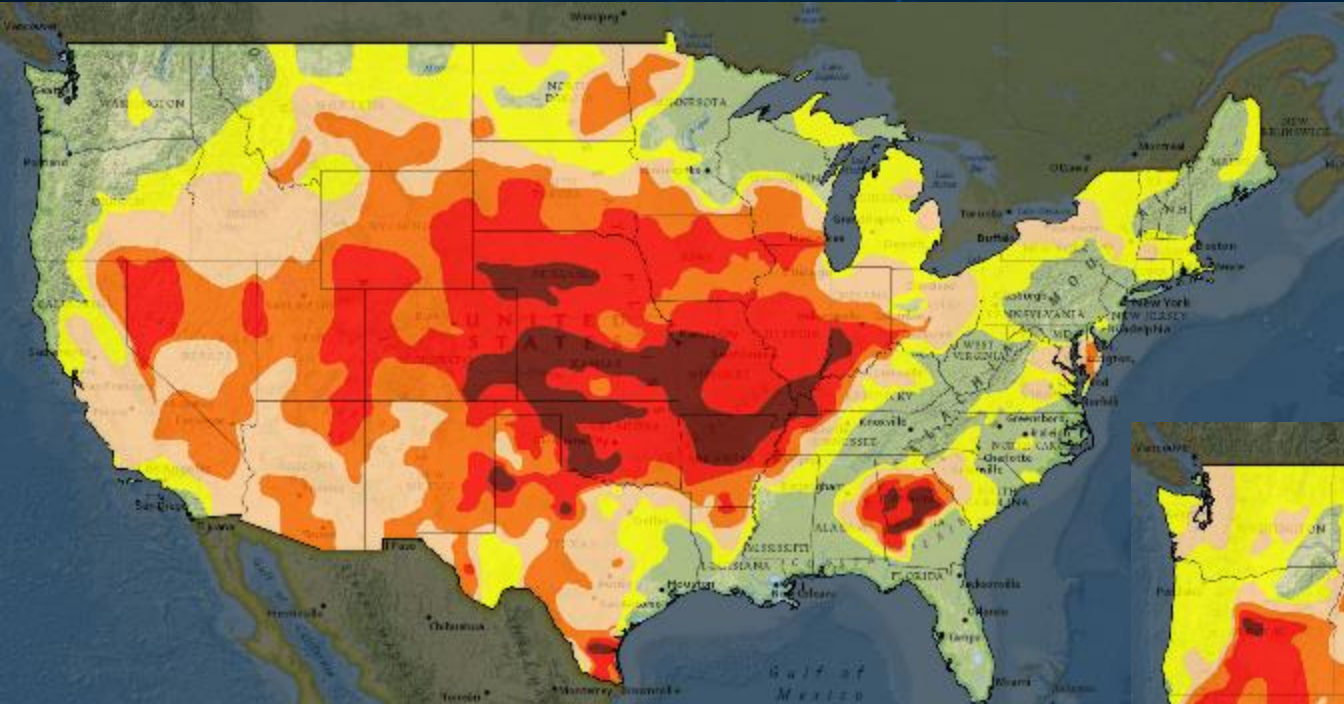
Belinda Constant

MRCPI DISASTER RESILIENCE AND ADAPTATION PROGRAM

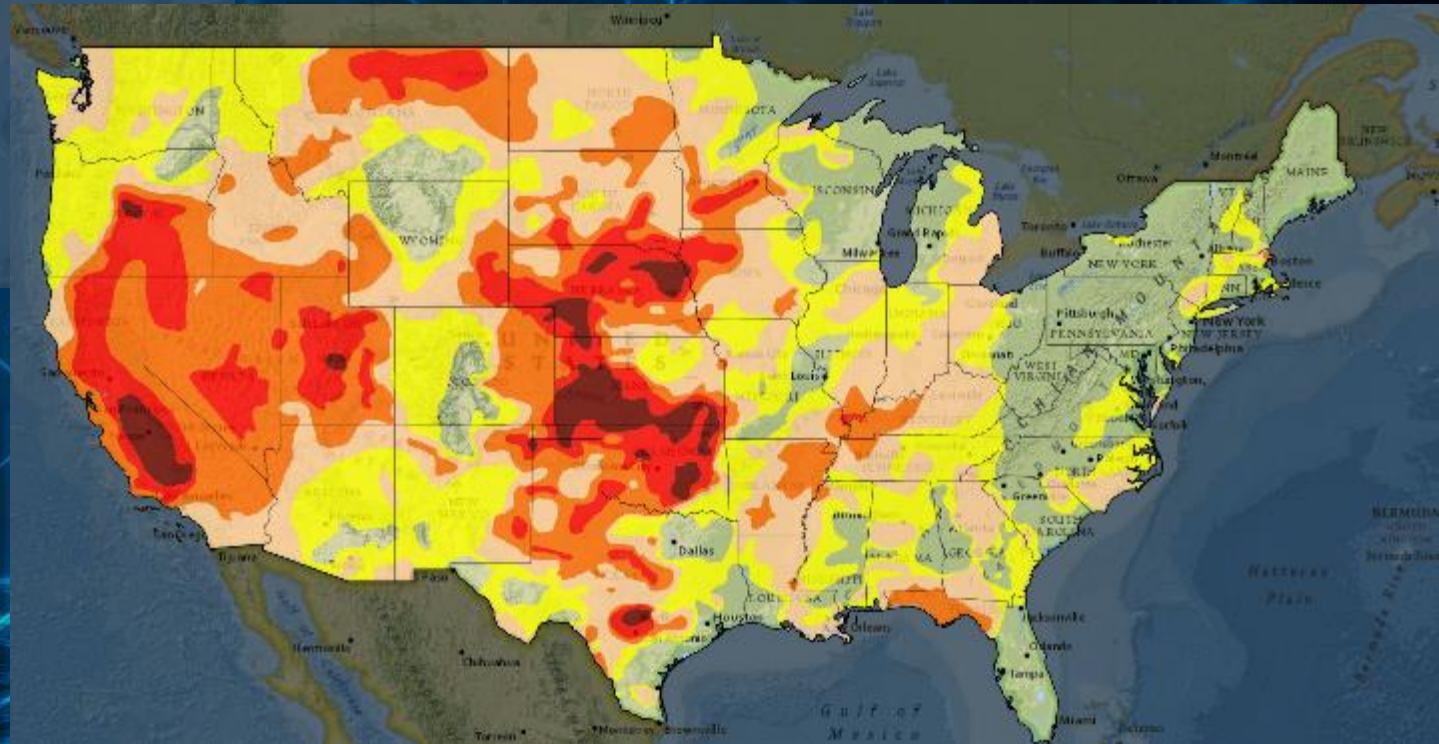


National Drought Monitor

August of 2012



Current





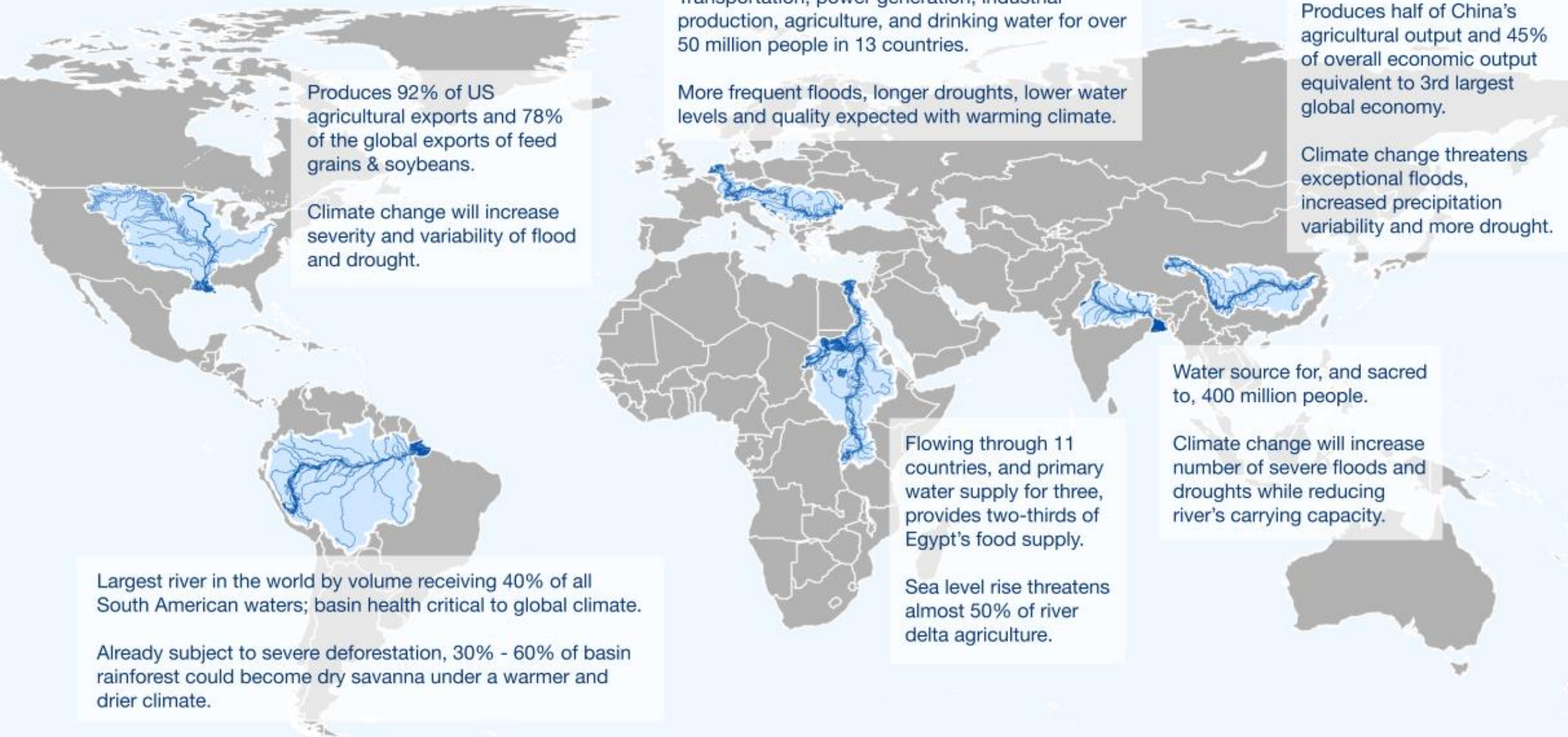
MRCTI COP 27

Mississippi River Cities & Towns Initiative
United Nations Climate Talks, Egypt 2022



MRCTI International Food and
Water Security Program





Produces 92% of US agricultural exports and 78% of the global exports of feed grains & soybeans.

Climate change will increase severity and variability of flood and drought.

Transportation, power generation, industrial production, agriculture, and drinking water for over 50 million people in 13 countries.

More frequent floods, longer droughts, lower water levels and quality expected with warming climate.

Produces half of China's agricultural output and 45% of overall economic output equivalent to 3rd largest global economy.

Climate change threatens exceptional floods, increased precipitation variability and more drought.

Largest river in the world by volume receiving 40% of all South American waters; basin health critical to global climate.

Already subject to severe deforestation, 30% - 60% of basin rainforest could become dry savanna under a warmer and drier climate.

Flowing through 11 countries, and primary water supply for three, provides two-thirds of Egypt's food supply.

Sea level rise threatens almost 50% of river delta agriculture.

Water source for, and sacred to, 400 million people.

Climate change will increase number of severe floods and droughts while reducing river's carrying capacity.

**DUCKS UNLIMITED/MRCTI
TARGET AREAS**

