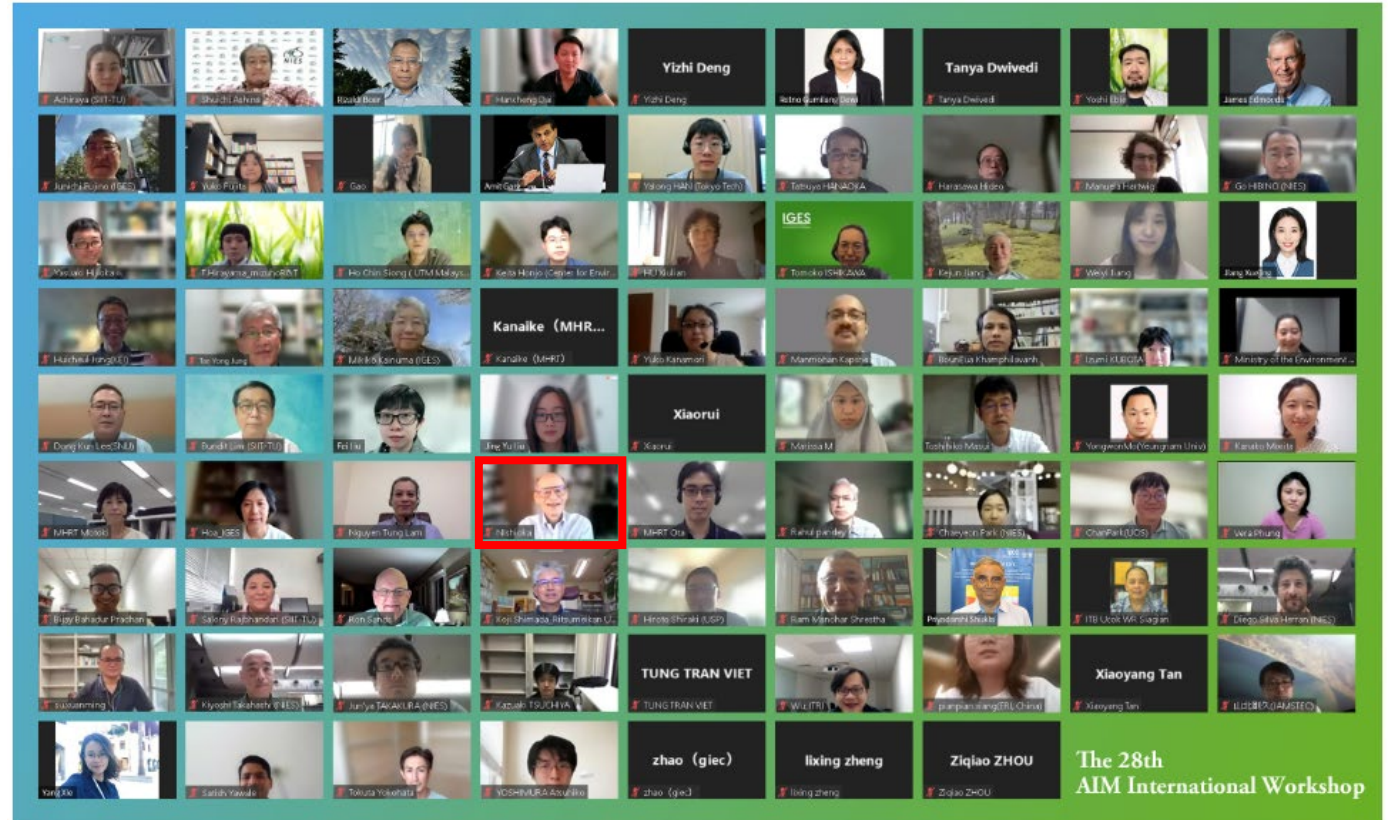


# AIM国際ワークショップ



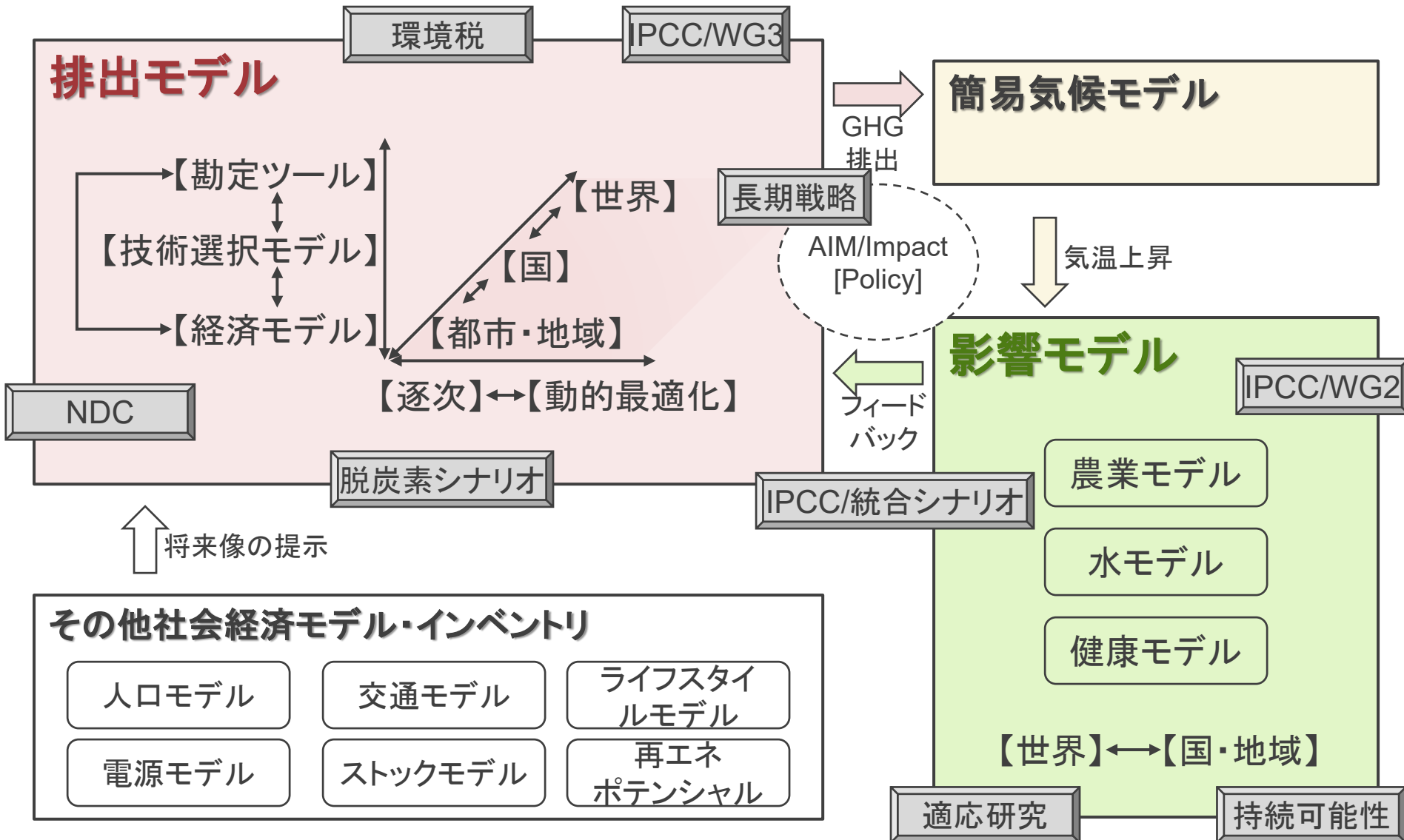
第3回AIM国際ワークショップ、1998年3月



第28回AIM国際ワークショップ、2022年9月

[https://www-iam.nies.go.jp/aim/index\\_j.html](https://www-iam.nies.go.jp/aim/index_j.html)

# 国立環境研究所が開発する AIM (Asia-Pacific Integrated Model) の俯瞰図



# 第8回LoCARNet 年次会合（北京）



Date: 7 - 8 November 2019 Venue: Beijing, China Organisers: Energy Research Institute (ERI), Beijing University of Technology (BJUT), NIES and IGES

A map of South and East Asia is the central focus, with labels for Bhutan, Nepal, India, Bangladesh, Laos, Cambodia, Vietnam, Thailand, Malaysia, Philippines, and Indonesia. Overlaid on the map are various low-carbon strategy reports and documents. For example, 'Low Carbon Society Vision 2050 INDIA' is shown for India, 'Low Carbon Society Development towards 2025 in Bangladesh' for Bangladesh, 'Low Carbon Development Strategy for Cambodia towards 2050' for Cambodia, 'A Roadmap for Sustainable Shiga towards 2030' for Shiga, 'Roadmap towards Carbon Kyoto' for Kyoto, 'Low Carbon Society Scenario Bhopal 2025' for Bhopal, 'VIBRANT AHMEDABAD' for Ahmedabad, 'Green City 2020' for Malaysia, 'Low Carbon Society Scenario Towards 2050 INDONESIA Energy Sector' for Indonesia, and 'THAILAND'S THIRD NATIONAL COMMUNICATION' for Thailand. Other documents include 'Low Carbon Society Vision 2050 towards' for Ahmedabad, 'Low Carbon Society Scenario Bhopal 2025', 'Green City 2020 Baseline &amp; Preliminary Report', 'Low Carbon Society Scenario Towards 2050 INDONESIA Energy Sector', and 'THAILAND'S THIRD NATIONAL COMMUNICATION'. The map also shows major cities like BOMBAY, BANGALORE, MADRAS, COLOMBO, and BANDAR SERI BEGAWAN.

AIM is used in the Thailand NDC report

AIM is used in Indonesia Long-term strategy for Low Carbon and Climate Resilience 2050

<http://2050.nies.go.jp/LCS>