

SDGs and Toyama's Value Added Compact City Model

Mayor Masashi Mori, Toyama, Japan



United Nations & Japan, Ministry of the Environment
New York, July 15, 2019
Local and Regional Governments' Forum

Creating a Compact City

By revitalizing public transport such as railway track lines, and by concentrating residential, commercial, business, and cultural buildings along those lines, a compact city is created with public transportation at its center.

“Skewer and Dumpling” Concept

Skewer: Major public transportation lines

Dumpling: Areas within walking distance connected by the skewers

Three Pillars of Compact City

1. Revitalizing Public Transport
2. Encouraging Citizens and businesses to relocate along public transportation
3. Revitalizing the City Center

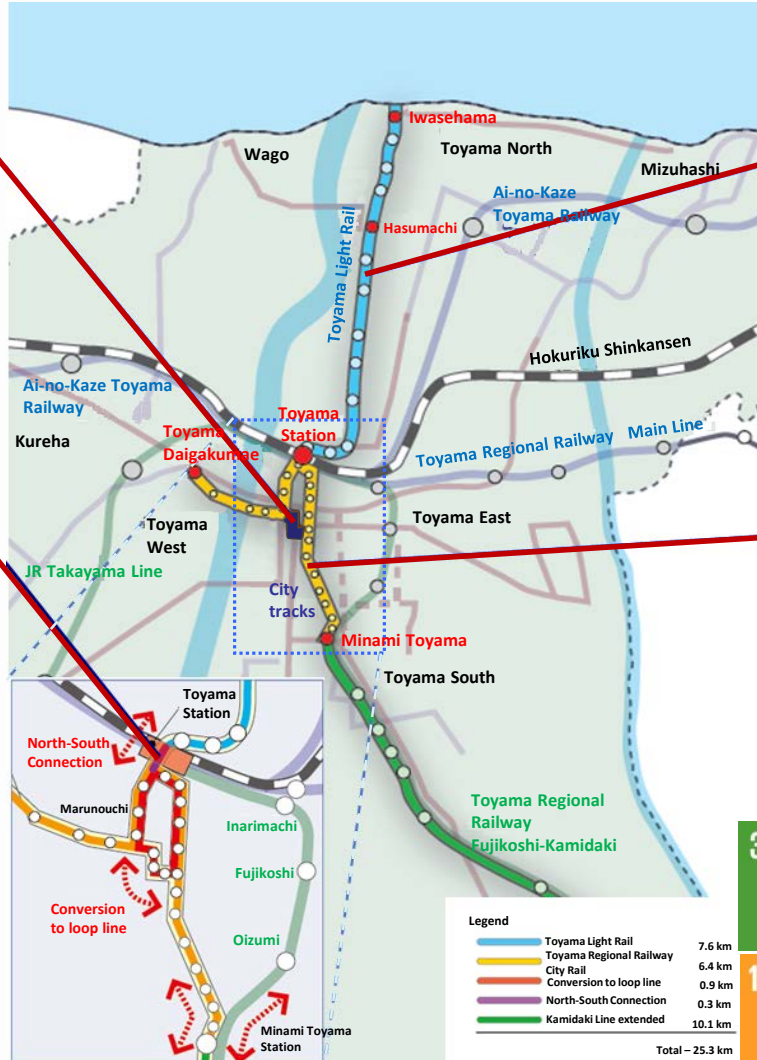


Formation of an LRT Network

People-friendly and Eco-friendly LRT Network Fosters Connectivity



City Train Loop Line
Opened Dec 2009



Toyama Light Rail (2006)



City Train Line

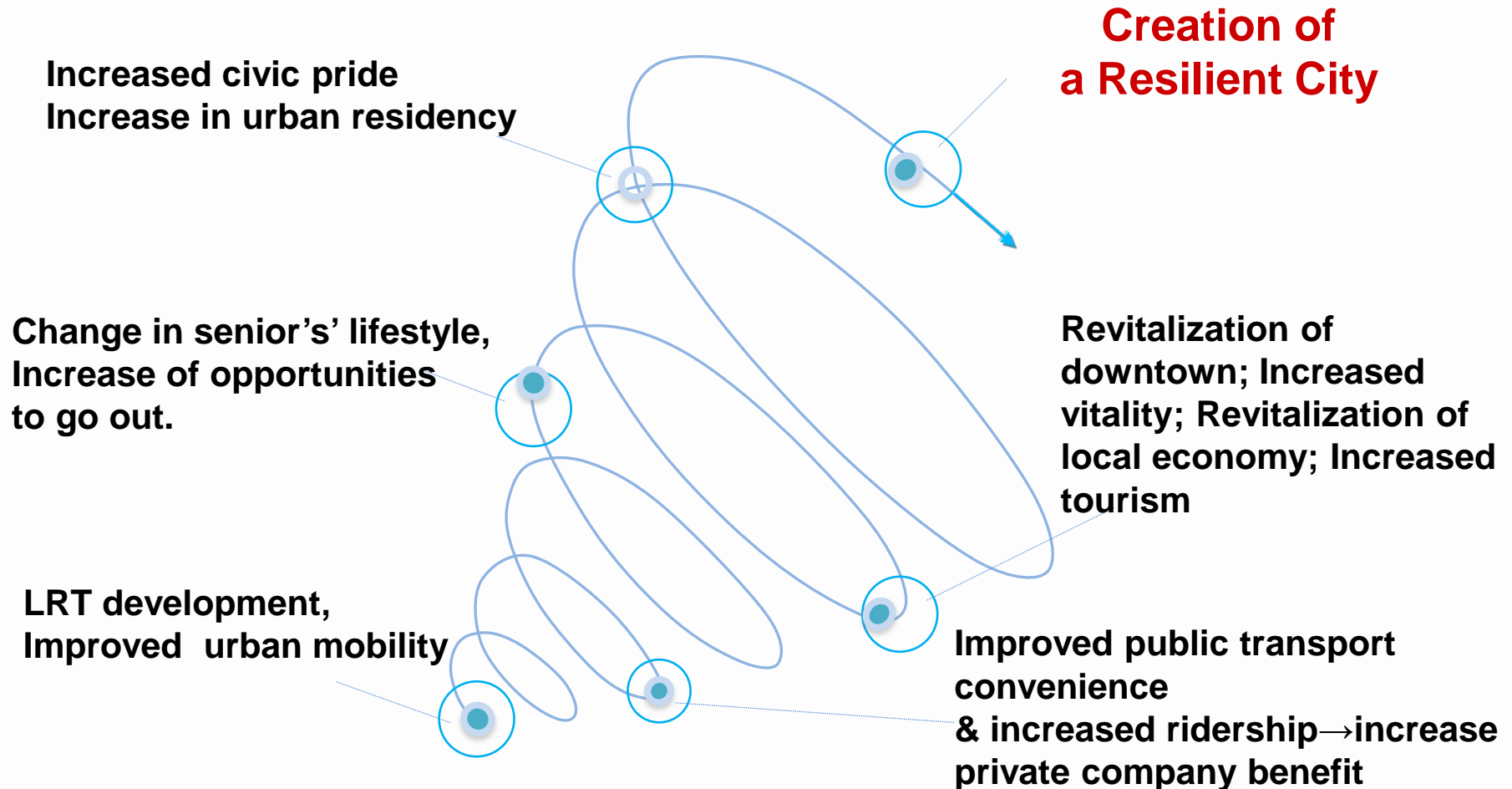


Services extended to go below
Shinkansen's elevated tracks
Opened Mar 2015



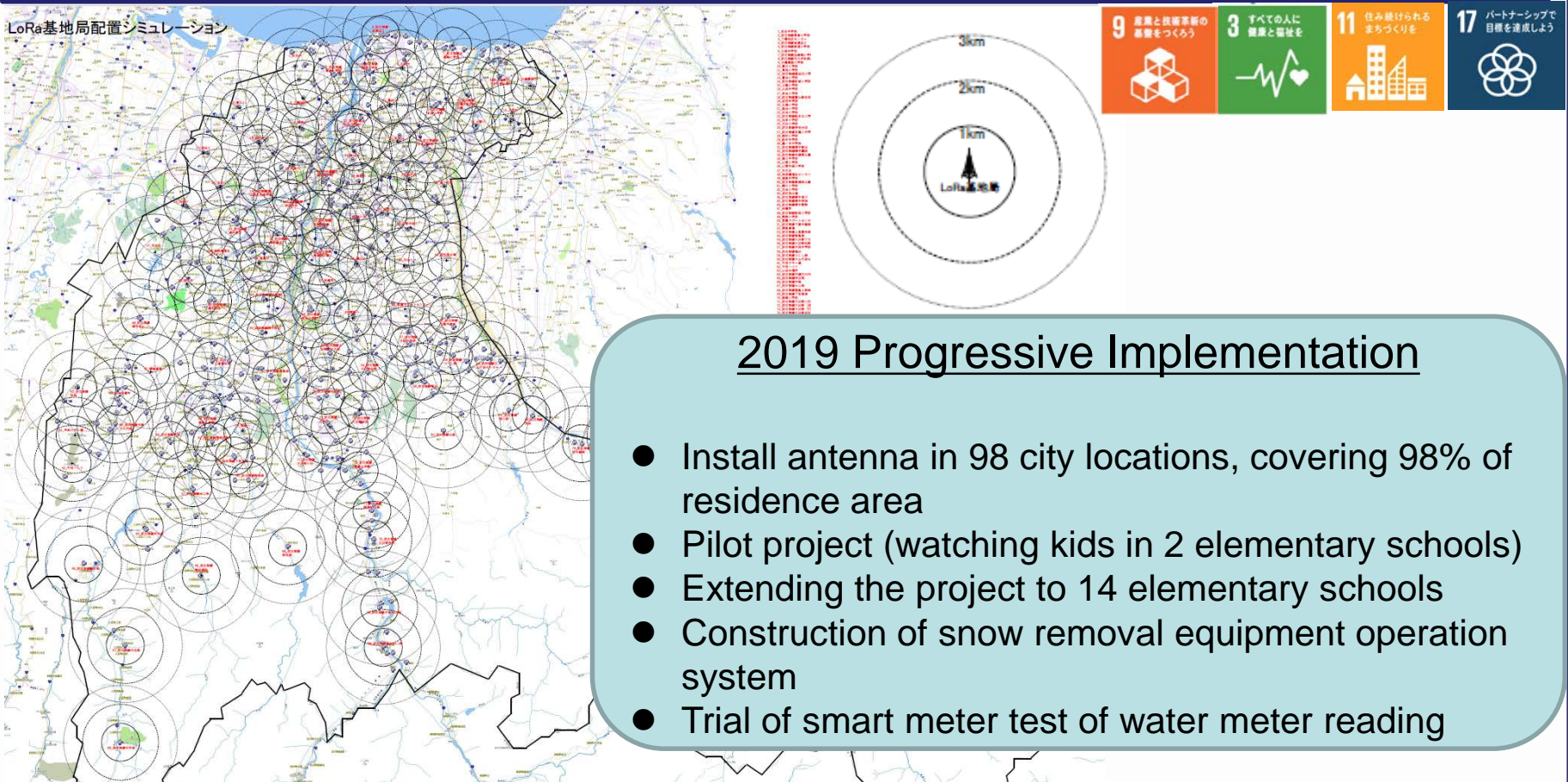
Value Added Effects of Our Compact City Strategy

A “Positive Spiral” has been created bringing positive results and changes to the city and its citizens.

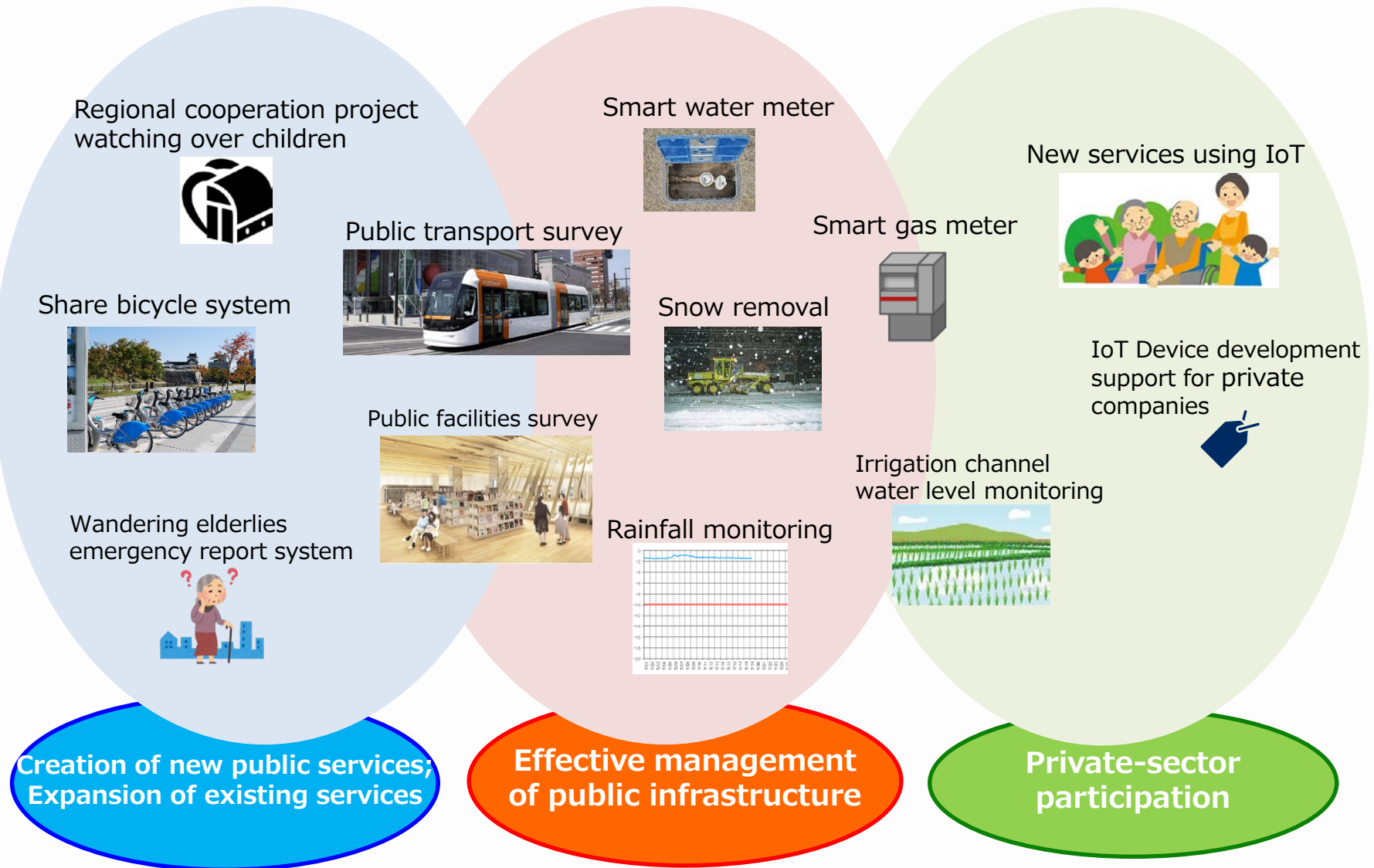


Installing LPWA: a Smart City Supports a Healthy Life

Wireless Sensor Network Project - Establish a city wide communication network by LPWA (Low Power Wide Area) and promote IoT in all city operations.



Future Utilization of Wireless Sensor Network



Toyama Regional Circulating & Ecological Economy - Future Vision

