



# Miami-Dade County: The Road to Resilience

## Zero Carbon Cities

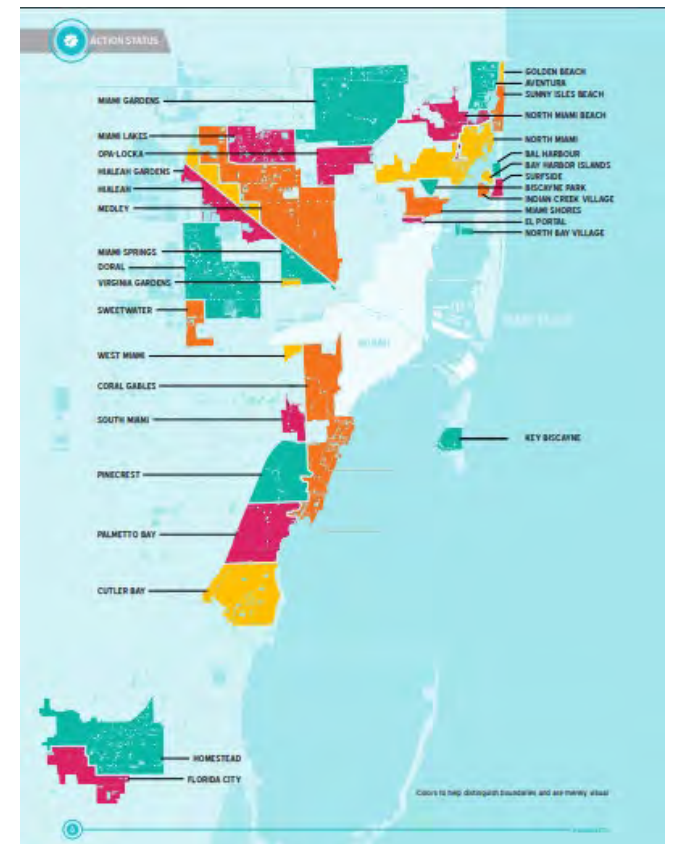
March 10, 2022



Patricia Gómez, Senior Resilience Program Manager, Miami-Dade  
County

Office of Resilience





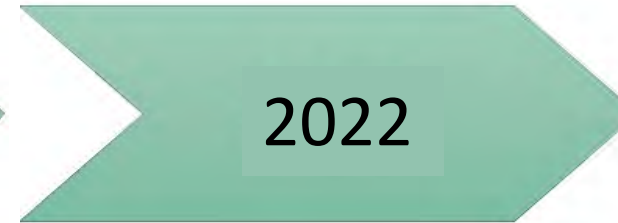
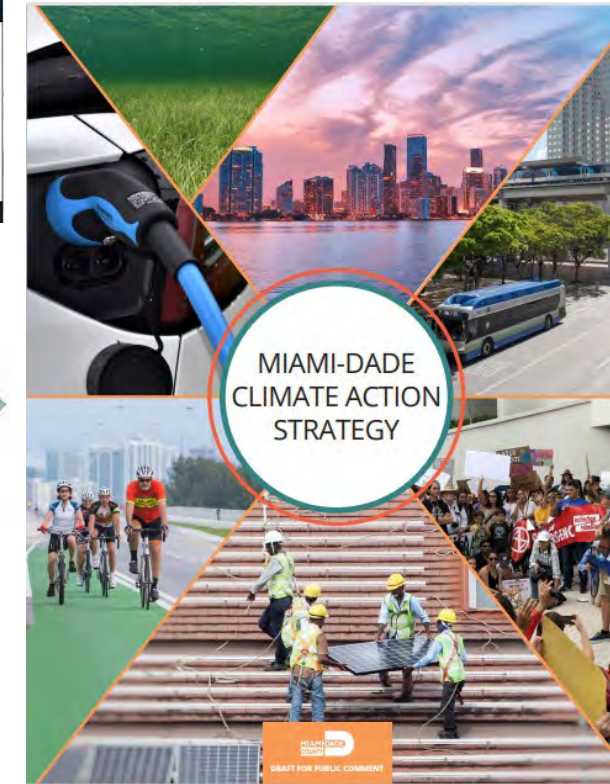
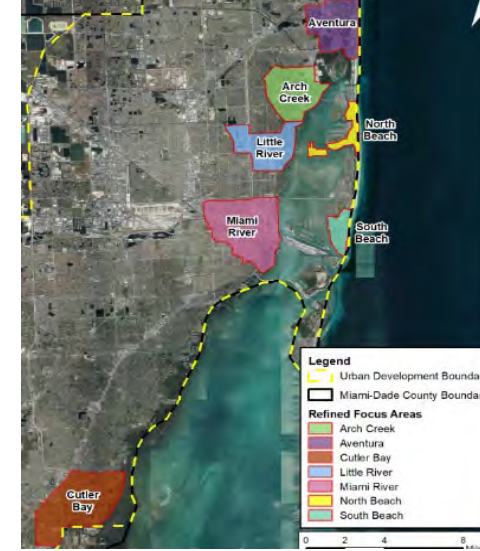
# Miami-Dade County



# History of Climate Action in Miami-Dade







## BUILDING OWNERS AND MANAGERS

Join the **BE305** CHALLENGE today!

The Miami-Dade County Office of Resilience's Building Efficiency 305 (BE305) Challenge focuses on improving building performance and reducing operational costs.

**WHO CAN PARTICIPATE:**  
Owners and managers of existing residential and commercial buildings.

**WHAT IS THE COMMITMENT:**  
To lower building energy and water use over time with assistance from industry experts and the Office of Resilience.

**WHAT'S IN IT FOR PARTICIPATING PROPERTIES:**

- Free trainings to help you lower your operating costs.
- Educational opportunities from industry experts.
- Peer-to-peer networking.
- Public recognition and other incentives from the County, plus great potential for lower utility bills & operating costs, and higher tenant satisfaction.
- Opportunities to win free building energy and water audits.

**ACT NOW! PARTICIPATION IS LIMITED.**

**JOIN NOW!**  
PARTICIPATION IN THIS EXCITING CHALLENGE IS LIMITED  
[CLICK HERE](#) to register!

[be305about-mdc.hub.arcgis.com](#)





# Miami-Dade County's Office of Resilience



## MITIGATION

reducing climate pollution



## ADAPTATION

address climate change impacts



## COMMUNICATION

engage & connect



## BISCAYNE BAY

protect & restore



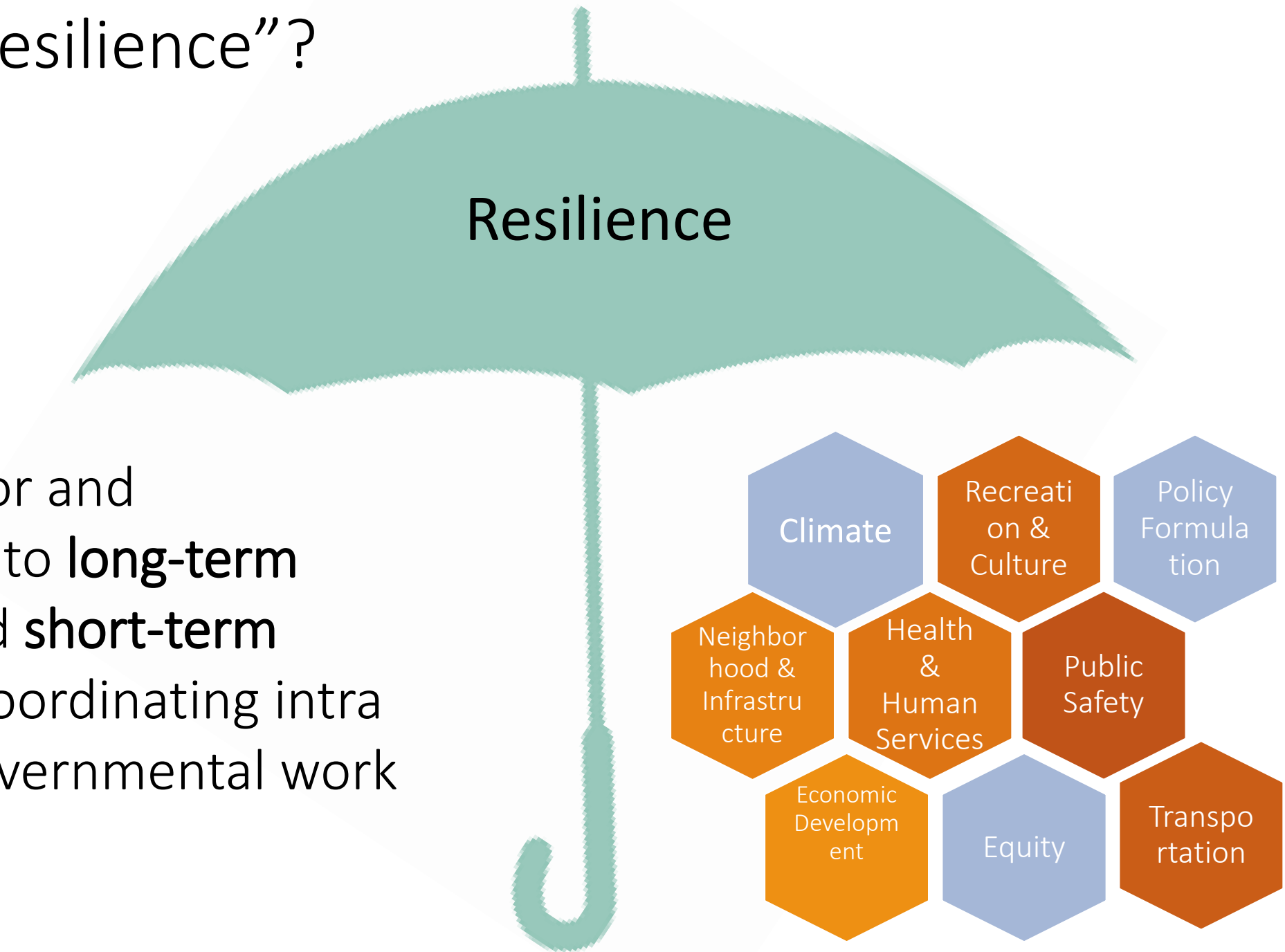
## EXTREME HEAT

accelerate & coordinate efforts



# What is “resilience”?

Preparing for and responding to **long-term stresses** and **short-term shocks** by coordinating intra and intergovernmental work in ----->





# GREATER MIAMI & THE BEACHES RESILIENT305 STRATEGY



## PLACES

### OBJECTIVES

- ◆ Enhance Natural Systems
- ◆ Safeguard Urban Systems
- ◆ Create Mobility Options
- ◆ Increase Energy Efficiencies
- ◆ Enhance Housing Options

19 actions | 5 spotlights  
11 case studies



## PEOPLE

### OBJECTIVES

- ◆ Cultivate Financial Stability
- ◆ Advance Public Health Priorities
- ◆ Strengthen Community Response
- ◆ Communicate the Concept of Resilience

22 actions | 13 spotlights  
8 case studies



## PATHWAYS

### OBJECTIVES

- ◆ Pre-plan for Post Recovery
- ◆ Cultivate Resilience Expertise
- ◆ Leverage our Experience
- ◆ Develop Shared Resources
- ◆ Leverage our Dollars

18 actions | 6 spotlights  
9 case studies



# Year 1 Highlights

## Action Progress:

- 53 items **in progress**;
- 6 items **not started**;

## Our partners:

- 2 Chief Resilience Officers **Surfside & Key Biscayne**;
- 4 cities with new Resilience/Sustainability Committees **El Portal, North Bay Village, Miami Shores, Surfside**





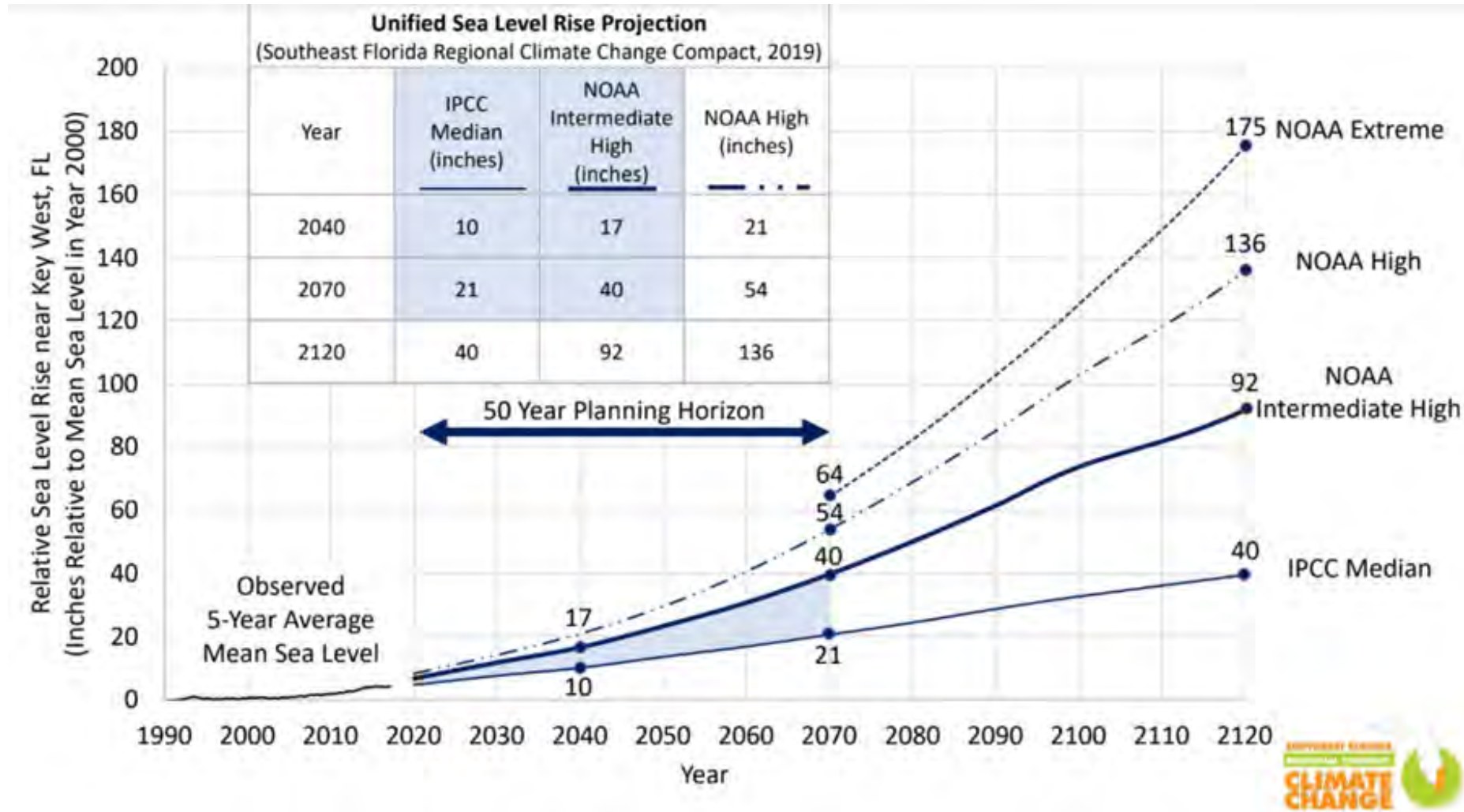
# Advancing Climate Action





# Southeast Florida Regional Unified Sea Level Rise Projection

Updated every 5 years





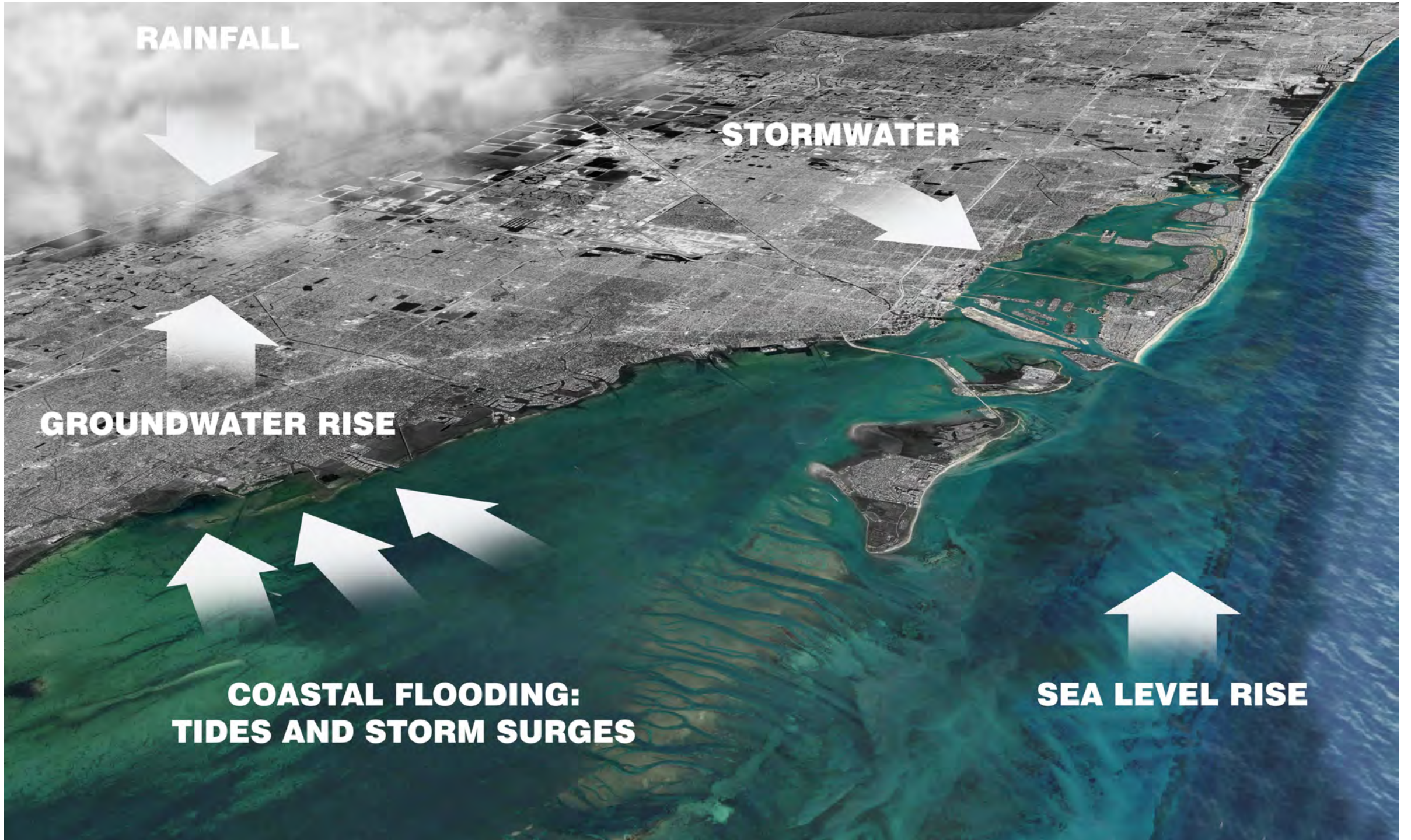
**RAINFALL**

**STORMWATER**

**GROUNDWATER RISE**

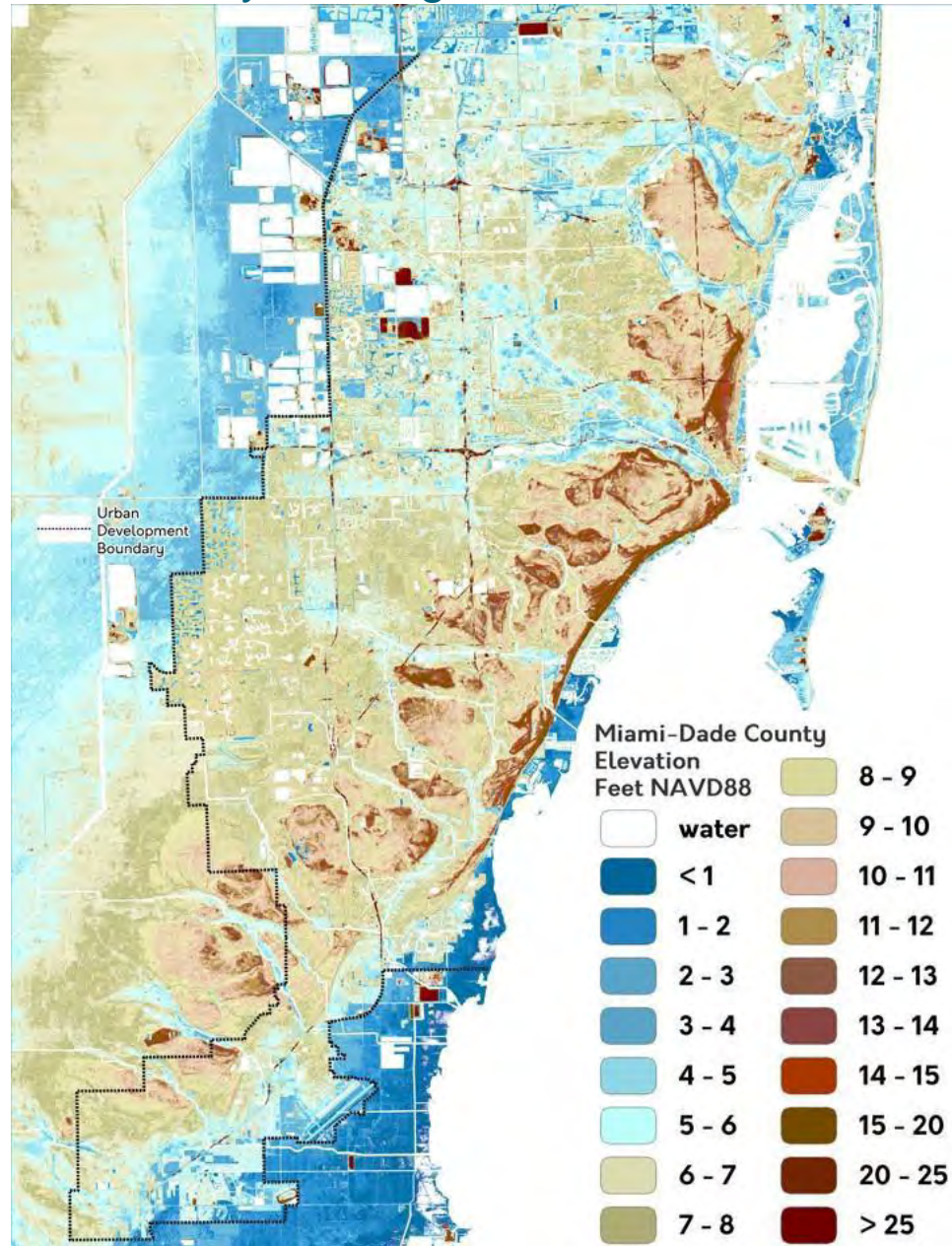
**COASTAL FLOODING:  
TIDES AND STORM SURGES**

**SEA LEVEL RISE**





## Our history of living with water





# Adaptation: Preparing for climate change





# Accelerate Adaptation Action Areas across the County

## Next step:

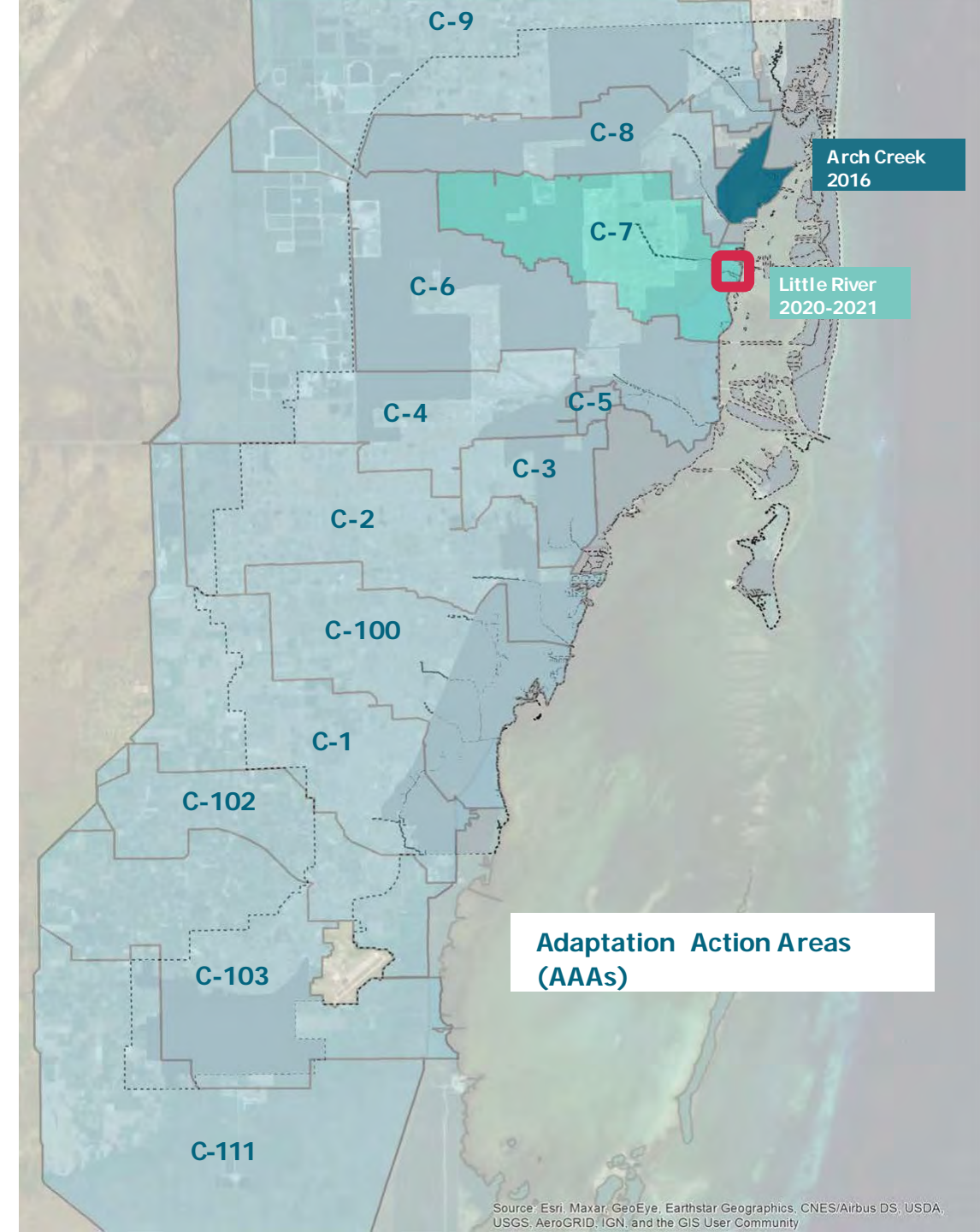
- Fund recommended projects
- Continue AAA planning in new area
- Coordinate with municipalities
- Continue discussions with the Planning department

## Progress:

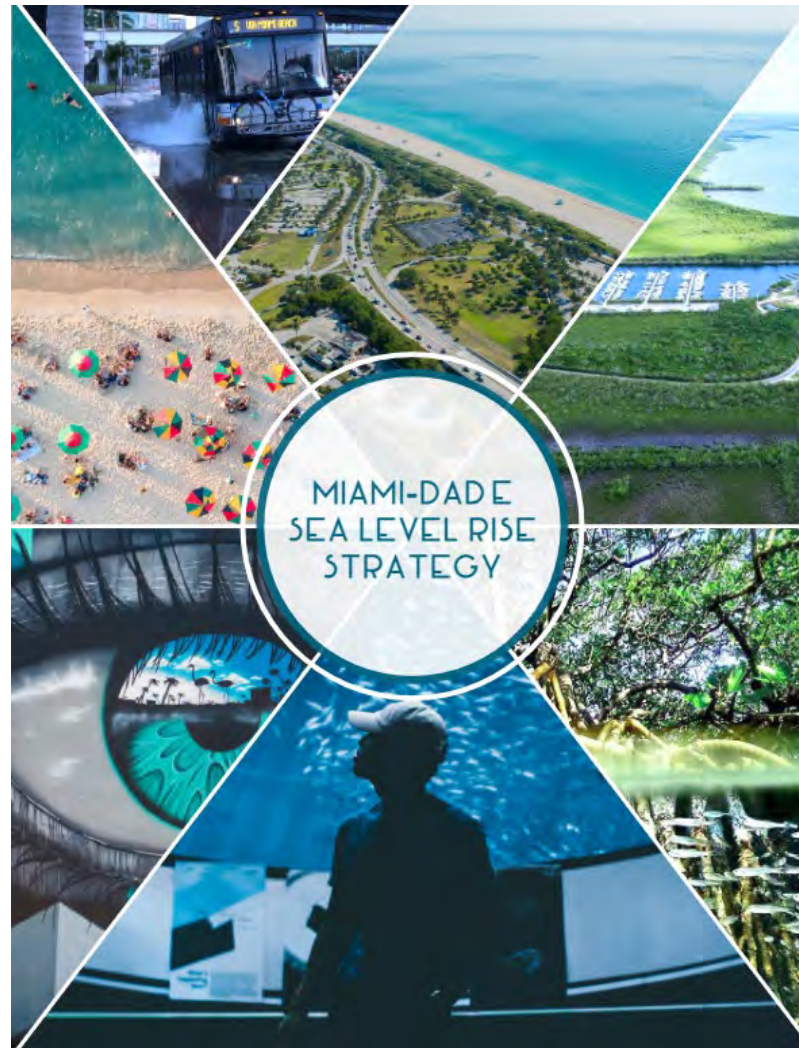
- Little River AAA in-progress to identify projects

## Funding:

- FDEP grant
- OOR funding for North Shorecrest Park expansion



# Advancing Climate Action

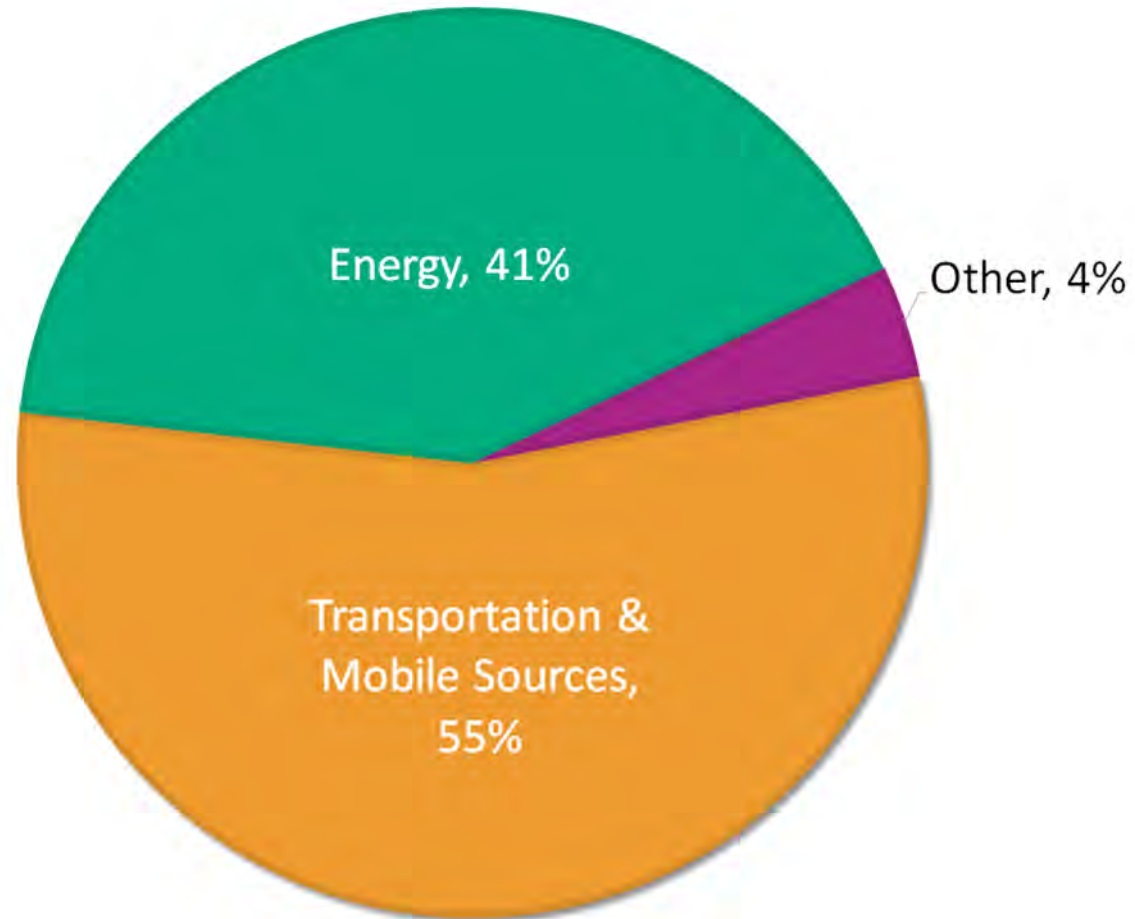




# Communitywide Emission Sources 2019



2019 COMMUNITY-SCALE INVENTORY BY  
SECTOR





Emission reductions from 2019 levels

50%

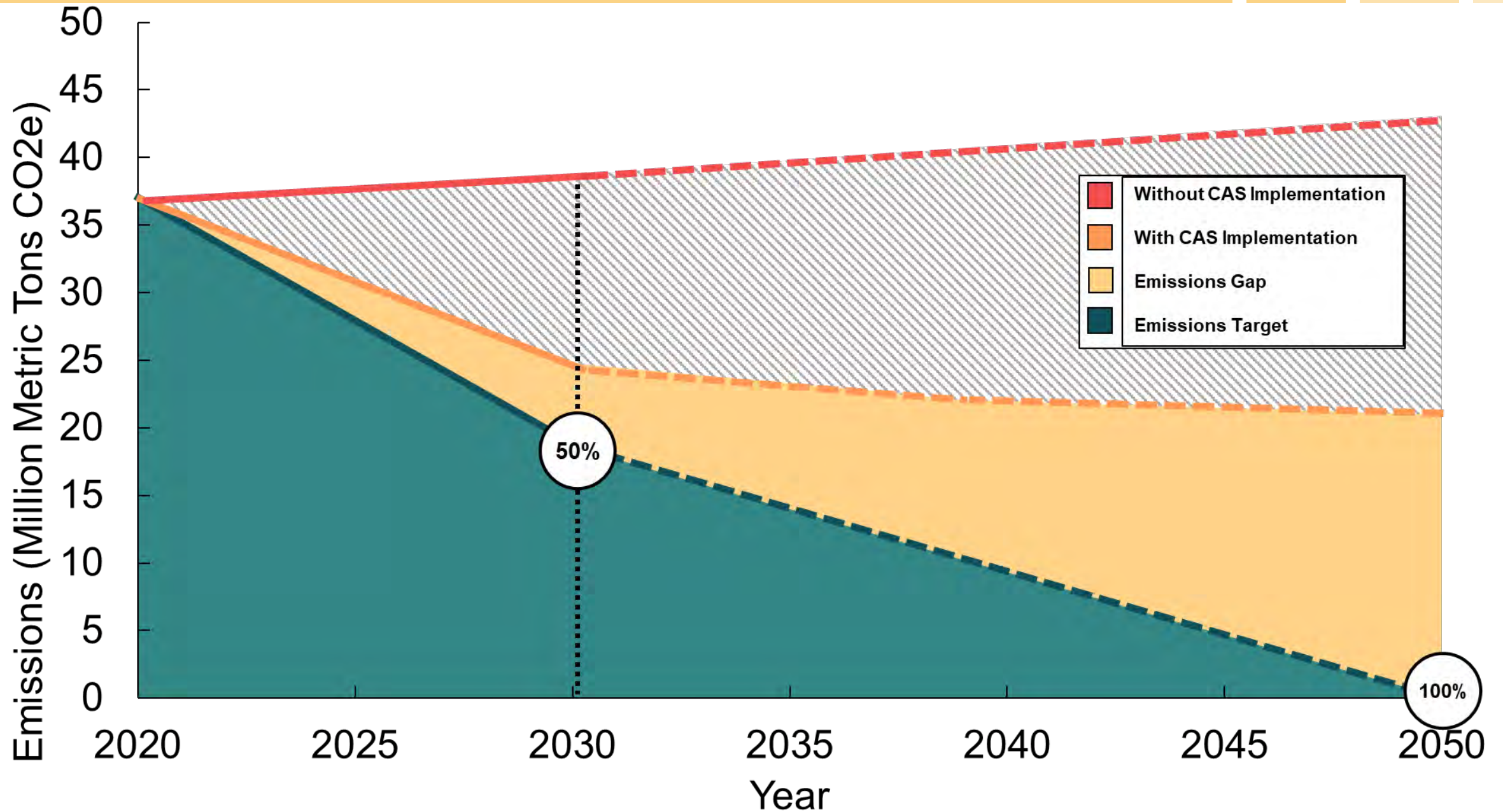
by 2030

Net Zero by 2050

RACE TO ZERO



# Miami-Dade GHG Forecast Scenarios



# A Three-Part Strategy to Cut Emissions



## BUILDINGS & ENERGY



## LAND USE & TRANSPORTATION



## WATER & WASTE



# Co-benefits - Creating Jobs, Equity and Health







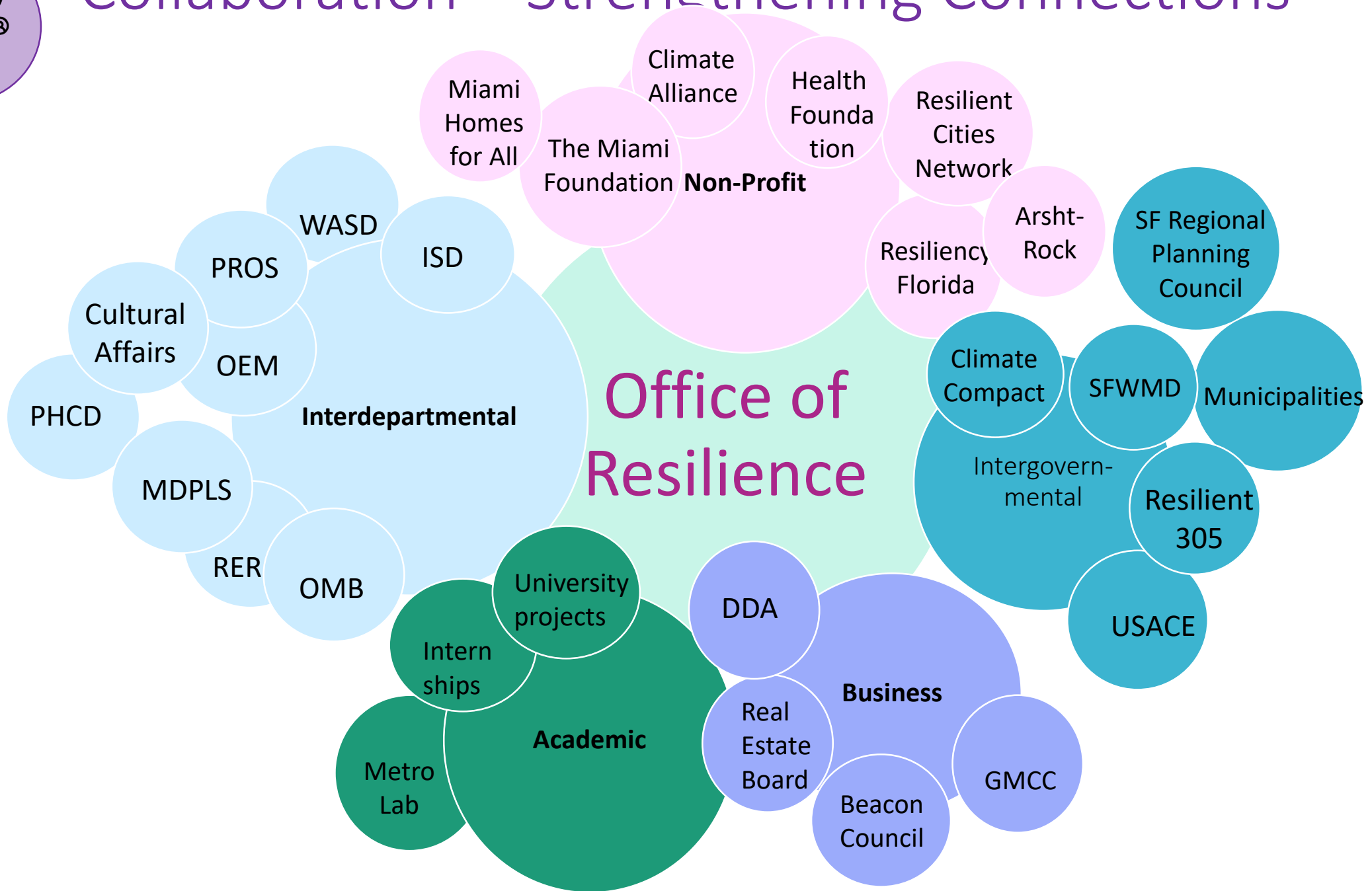
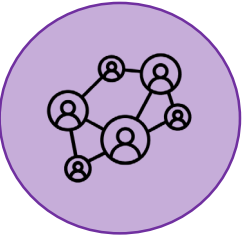
**GOAL:** Reduce energy and water use by 20% over 5 years for cohort

Open to all interested owners or managers of existing residential and commercial buildings





# Collaboration – Strengthening Connections



Regional collaboration is part of our DNA

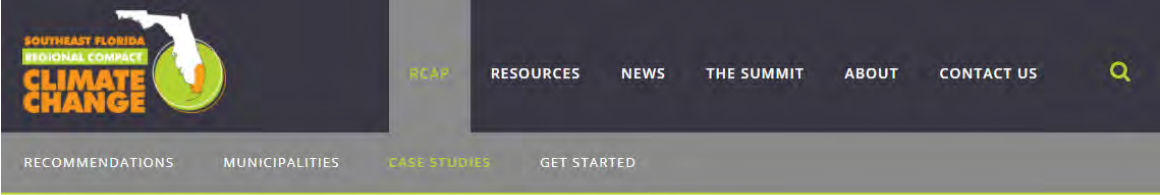
SOUTHEAST FLORIDA  
REGIONAL COMPACT  
CLIMATE  
CHANGE



Welcome to  
RCAP 2.0

BUILD YOUR OWN PLAN GET STARTED

Implementation and  
funding support from:



## Case Studies

### Hill Avenue Drainage

Due to flooding, the Town of Mangonia Park decided to improve its stormwater infrastructure. The town received a \$500,000 grant to do the engineering and design. The construction was carried out in phases, with the money for phase I awarded by the Department of Environmental Protection. The project, which found full support from residents and [...]

### Advanced Hydrologic Modeling

In 2006, Broward County partnered with the U.S. Geological Survey (USGS) to develop a numerical model tracking the movement of saltwater inundation in the northern third of the county. The initial results established that the model accurately represented the historic movement of the saltwater front, while sensitivity analyses identified how various factors contributed to the [...]

### Transportation Management Initiative

The City of Boca Raton's Transportation Management Initiative (TMI) program was established to develop solutions to local traffic congestion problems. The TMI is a resource for residents and employees, offering alternatives to driving alone, such as carpooling, taking the train or bus, riding a bike, and/or walking. The TMI offers a Tri-Rail shuttle system connecting [...]

### South Miami Intermodal Transportation Plan

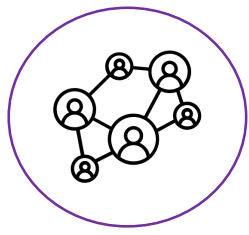
The City of South Miami desires to enhance the existing transportation system and mobility choices available to

### Browse by Category

- > Agriculture
- > Energy and Fuel
- > Natural Systems
- > Risk Reduction and Emergency Management
- > Sustainable Communities and Transportation
- > Water

<http://southeastfloridacimatecompact.org/>



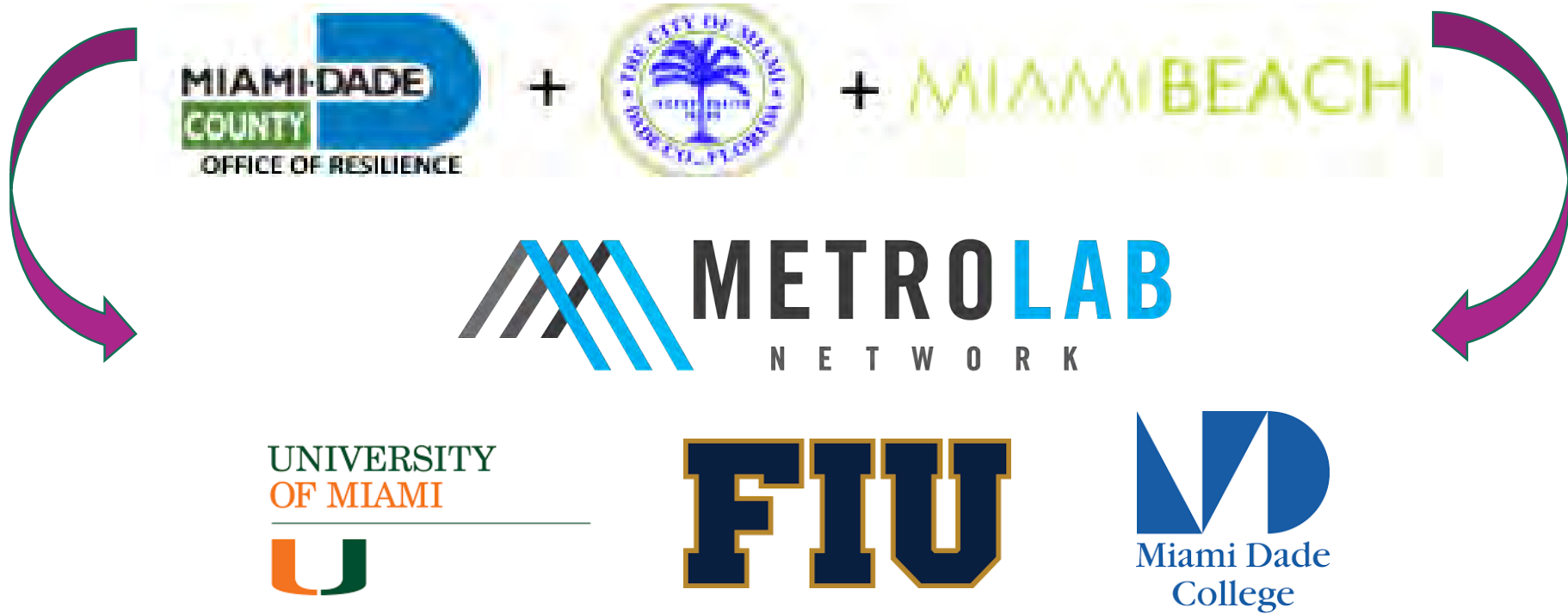


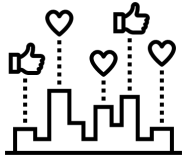
# Collaboration – Strengthening Connections

## Action 49: Collaborate With Universities

305  
RESILIENT

RESEARCH COLLABORATIVE





# Community Engagement & Communications - Centered in Equity -



Miami-Dade Office of Resilience

Published by Sandra St. Hilaire · December 10 at 10:56 AM



Resilient305 @Resilient305 · Jul 25

Food insecurity in South Florida has grown worse as a result of the pandemic. Make sure to check out the weekly list of food distributions taking place at parks, libraries, schools, open spaces and more. View the list @MiamiDadeCounty at [miamidade.gov/global/initiat...](https://miamidade.gov/global/initiat...) #Resilient305



1 2



[View as Webpage](#)

Mayor Daniella Levine Cava creates new administration roles to lead innovation and intergovernmental affairs



Participe con sus vecinos y la **OFICINA DE RESILIENCIA** del Condado de Miami-Dade en una charla en línea sobre la elevación del nivel del mar y su experiencia en inundaciones.

Martes, **15 DE DICIEMBRE DEL 2020**  
5:30 - 7:30 p.m.

**PARA INSCRIBIRSE**

Envíe un correo electrónico a: [resilience@miamidade.gov](mailto:resilience@miamidade.gov)  
o llame/mande un mensaje al 786-479-8947



Participe por

[miamidade.zoom.us/j/4337451261](https://miamidade.zoom.us/j/4337451261)

o llame al 786-635-1003

ID DE LA REUNIÓN:  
433 745 1261



Thank you!

Patricia Gómez

Senior Resilience Program Manager

Miami-Dade County

[Patricia.gomez@miamidade.gov](mailto:Patricia.gomez@miamidade.gov)

