

The logo for 'Rencana' features the word in a white, cursive script. Above the letter 'a' is a white silhouette of a mountain range with a small cross on the highest peak.

Rencana

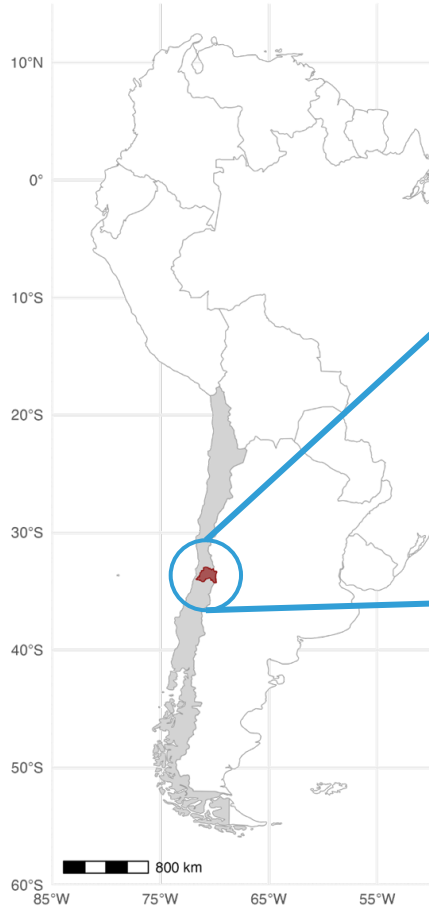
The logo for 'la fábrica' consists of the word 'la fábrica' in a white, sans-serif font. Above the 'a' in 'fábrica' is a white silhouette of a factory with three chimneys. Below the main text, the words 'MUNICIPALIDAD DE RENCIA' are written in a smaller, white, sans-serif font.

la fábrica
MUNICIPALIDAD DE RENCIA

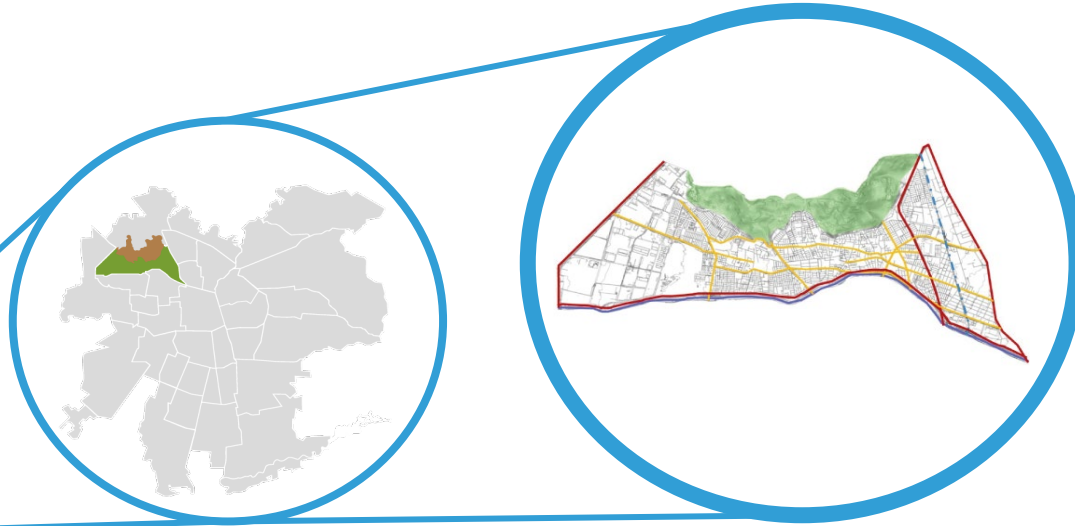
Case Rencia & Toyama

CITY TO CITY COLLABORATION

I RENCA: OUR CLIMATE ACTION JOURNEY



Source: Natural Earth + BCN



RENCA IS LOCATED IN THE METROPOLITAN AREA IN

CHILE

24 km²

163,102 inhabitants (2024)

~ 46,000 houses

3.5 to 4.5 m²/inhab green areas

150 L/day/person drinkable
water consumption

DECARBONIZATION CHALLENGE

Greenhouse gas emissions

615,385

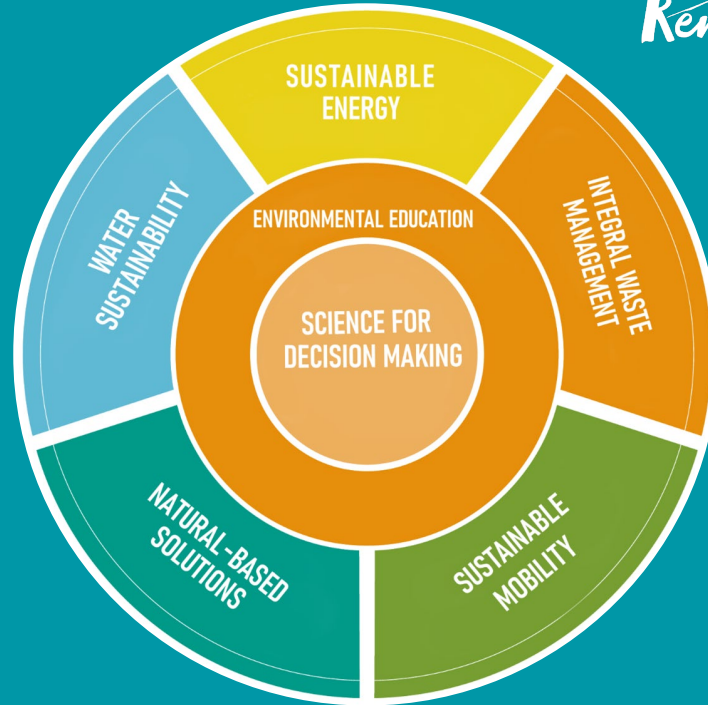
tons of CO₂ equivalent,

39.20% of which is
emitted by the city's
thermoelectric power plant.



CLIMATE STRATEGY

We have identified 5 areas of interconnected action for carbon neutrality



How to accelerate:

II

CITY TO CITY COLLABORATION RENCA TO YAMA

WHY TOYAMA IS A STRONG PARTNER FOR RENCA?

- ❖ Proven Chile–Japan bilateral cooperation .
- ❖ Extensive experience in city -to-city collaboration .
- ❖ Recognized as an SDGs Future City (2018).
- ❖ Established 2050 Zero Carbon City Declaration .
- ❖ Engaged private sector in decarbonization, innovation, and public–private partnerships.



CITY-TO-CITY COLLABORATION IN NUMBERS

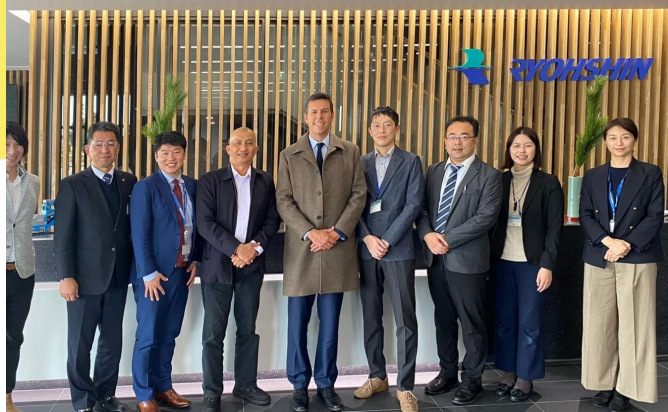


USD 300.000

Public JCM

Energy Supply Project by 2.0MW
Rooftop Solar Power System to
Industrial Plastic Plant in Renca.

CITY-TO-CITY COLLABORATION IN NUMBERS



+30

Private companies outreach

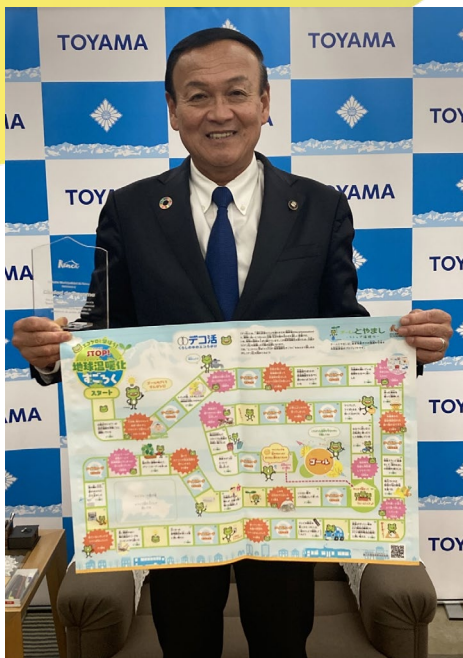
Technical on site visits and
attendance at annual seminars.



III

KEY LESSONS FROM TOYAMA

KEY LESSONS FROM TOYAMA



#1: Policy alignment and multi-level commitment are essential for real climate impact.

KEY LESSONS FROM TO YAMA

#2: Climate action must be holistic- education, capacity building and innovation work together.



KEY LESSONS FROM TOYAMA



#3: Long-term vision—and strong collaboration with the private sector—drives transformation.

The logo for 'Rencana' features the word in a white, elegant script font. Above the letter 'a' is a white silhouette of a mountain range with a small peak on the left.

Rencana

The logo for 'la fábrica' consists of the word 'la fábrica' in a white, sans-serif font. Above the 'a' in 'fábrica' is a white icon of a factory with three chimneys. Below the main text, the words 'MUNICIPALIDAD DE RENCA' are written in a smaller, all-caps, sans-serif font.

la fábrica
MUNICIPALIDAD DE RENCA

Case Rencna & Toyama

CITY TO CITY COLLABORATION