



# **OVERVIEW OF SOLID WASTE MANAGEMENT SERVICES IN SAHIWAL DIVISION**

**G o v e r n m e n t o f t h e P u n j a b**

## About Sahiwal Division

- Population: 8.4 Million (2023 Census)
- Area: 10,302 km<sup>2</sup>
- Current Waste Generation: Approx. 3,146 tons per day

### 03 Districts

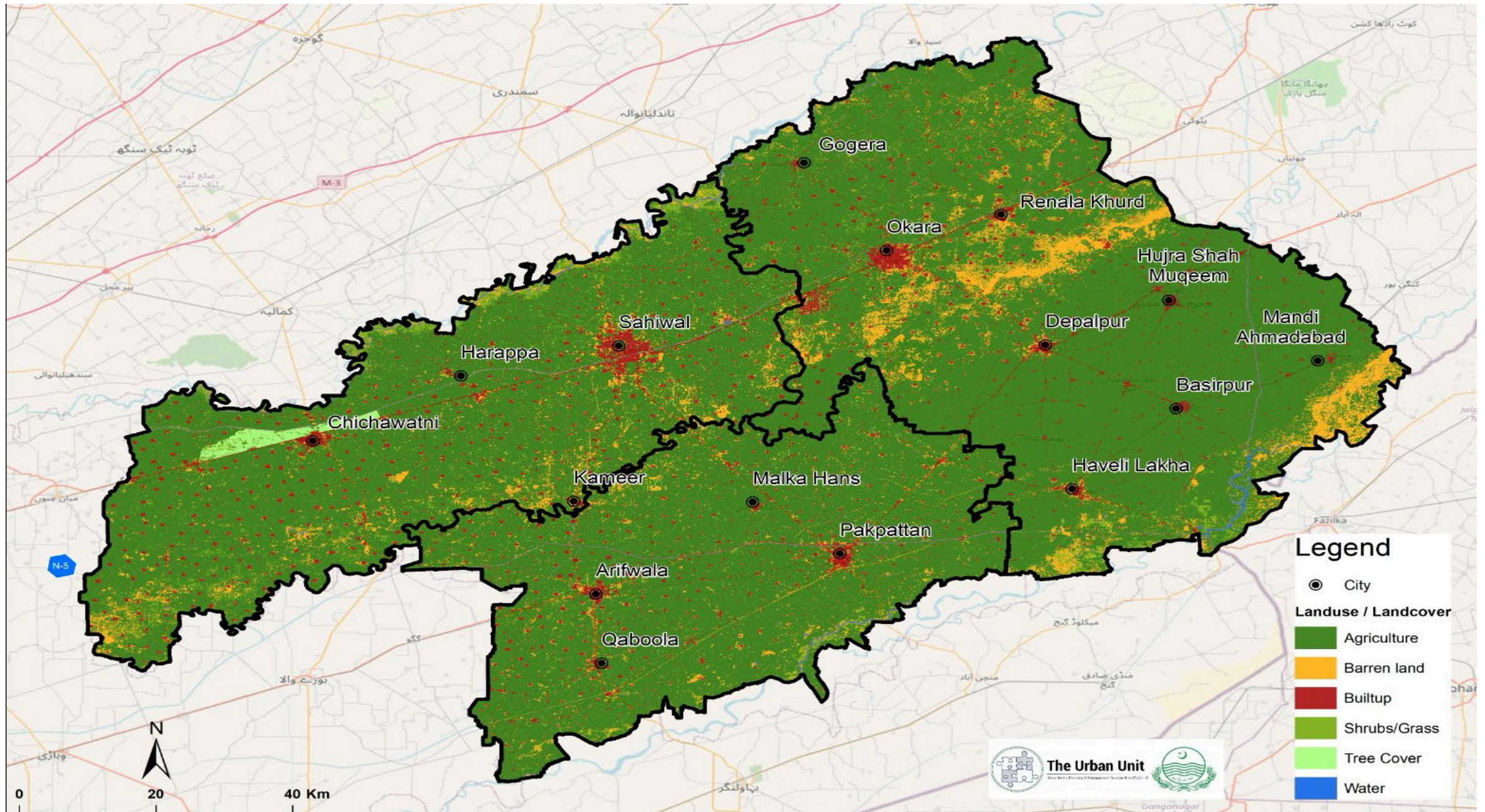
- Sahiwal
- Pakpattan
- Okara

### 07 Tehsils

- Sahiwal
- Chichawatni
- Pakpattan
- Arifwala
- Okara
- Renala Khurd
- Depalpur

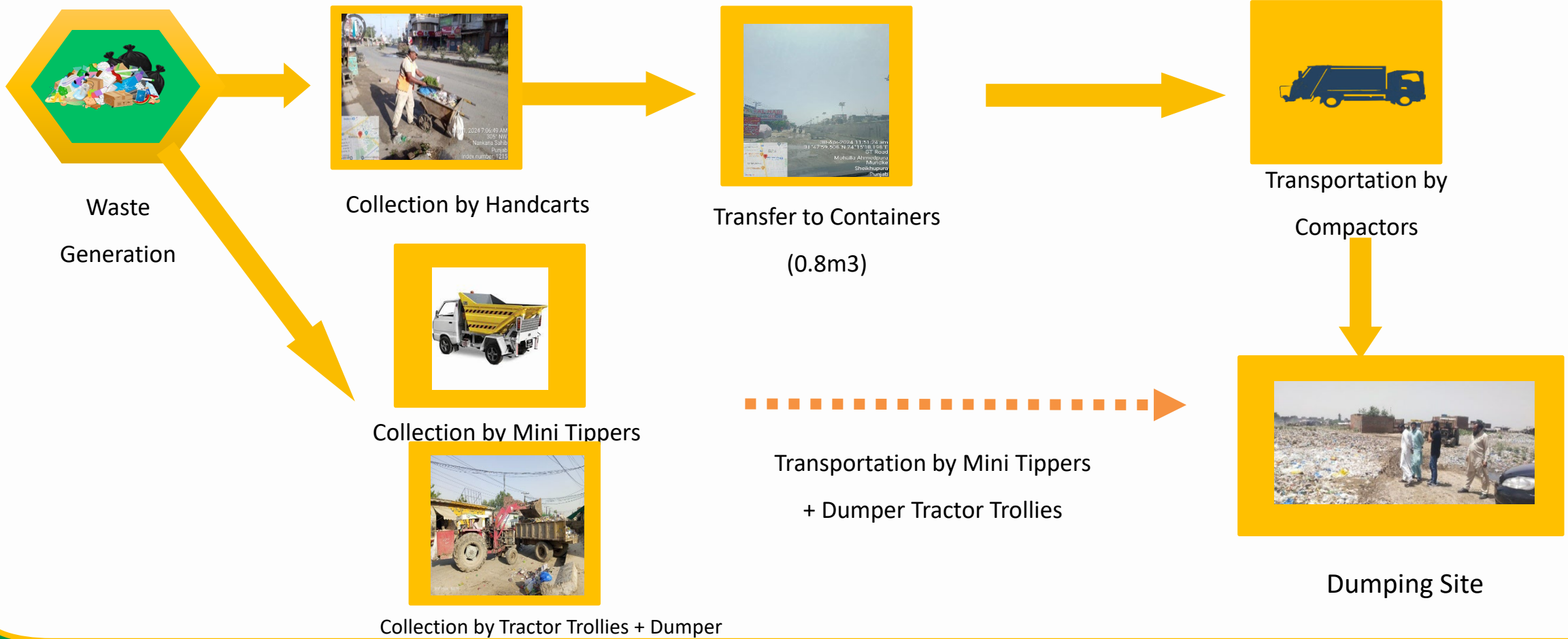


# MAP OF SAHIWAL DIVISION





# Erstwhile System of Municipal Services



# **Gaps Identification**

### **SWM Oriented**

- Lack of resources
- Obsolete operational practices
- No designated waste disposal site
- No proper digital monitoring mechanism

### **General**

- Geographical Conditions of Area
  - Lack of urban infrastructure
- Socio-economic Conditions
- Unplanned disposal areas
- Waste Awareness

## Formation of SWSSC

- Establishment of SWSSC in **2024** under Companies Act 2017
- SAAMA\* was signed between LGs & SWSSC
- Modern Corporate Practices (Independent BOD, Strategic plans and policies, SECP guidelines, Audits etc.)
- Hiring of professionals and start of an integrated Municipal Waste Management approach

*\*Services & Assets Management Agreement Through SAMAA, all the functions and assets of SWM department of LGs has been entrusted to SWSSC*

# BOARD OF DIRECTORS

**Mr. Shoeb Iqbal Syed** (Commissioner )  
Chairperson

Rep. of Secretary LG & CD Department  
Punjab (Ex. Officio Member)

Rep. of Secretary Finance Department  
Punjab(Ex. Officio Member )

**Deputy Commissioner, Sahiwal**  
(Ex. Officio Member)

**Iftikhar Ali** Chief Executive Officer  
(SWSSC) Secretary / Member

**Chief Officer, Municipal Corporation,  
Sahiwal**  
(Ex. Officio) Member

**Mr. Ehsan Ul Haq Idrees**  
Independent Director

**Mr. Khurram Raza**  
Independent Director

**Mrs. Shad Masood**  
Independent Director

**Dr. Saif Ullah Addl. Com (Coord.)**  
Technical Director

**Mr. M Ikram Malik**  
Technical Director

**Mr. Ashiq Ali Javed**  
Technical Director

**Mr. Assad Khalid**  
Independent Director

## out sourcing of SWM Services

- SWM services outsourced by SWSSC to private contractor in Sahiwal Division
- KPIs defined for efficient and effective service delivery
- Tariff system introduced to ensure a sustainable service mode



## Scope of Services

1. Primary collection – MSW
  - i. Door to door collection
  - ii. Container based
2. Manual sweeping
3. Bulk Waste Collection
4. Secondary waste collection – TCP, WE & DS Management
5. Mechanical Sweeping
6. Mechanical Washing
7. De-silting

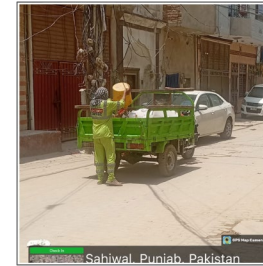
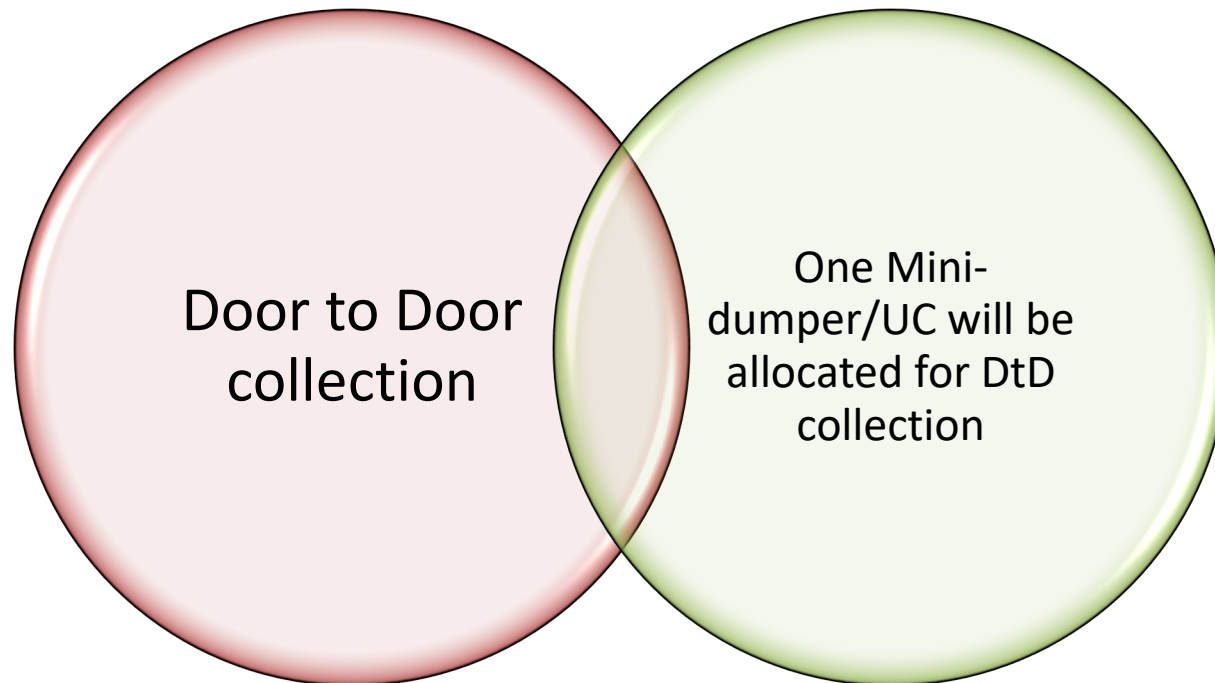
***Output based contract (KPIs to measure work efficiency)***

# INITIATIVES

## Major Interventions

- Door to Door Collection
- Complaint Redressal System
- Special Cleanliness Drives/Campaigns

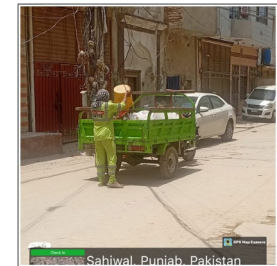
### DOOR to DOOR Collection



**Dedicated HR**

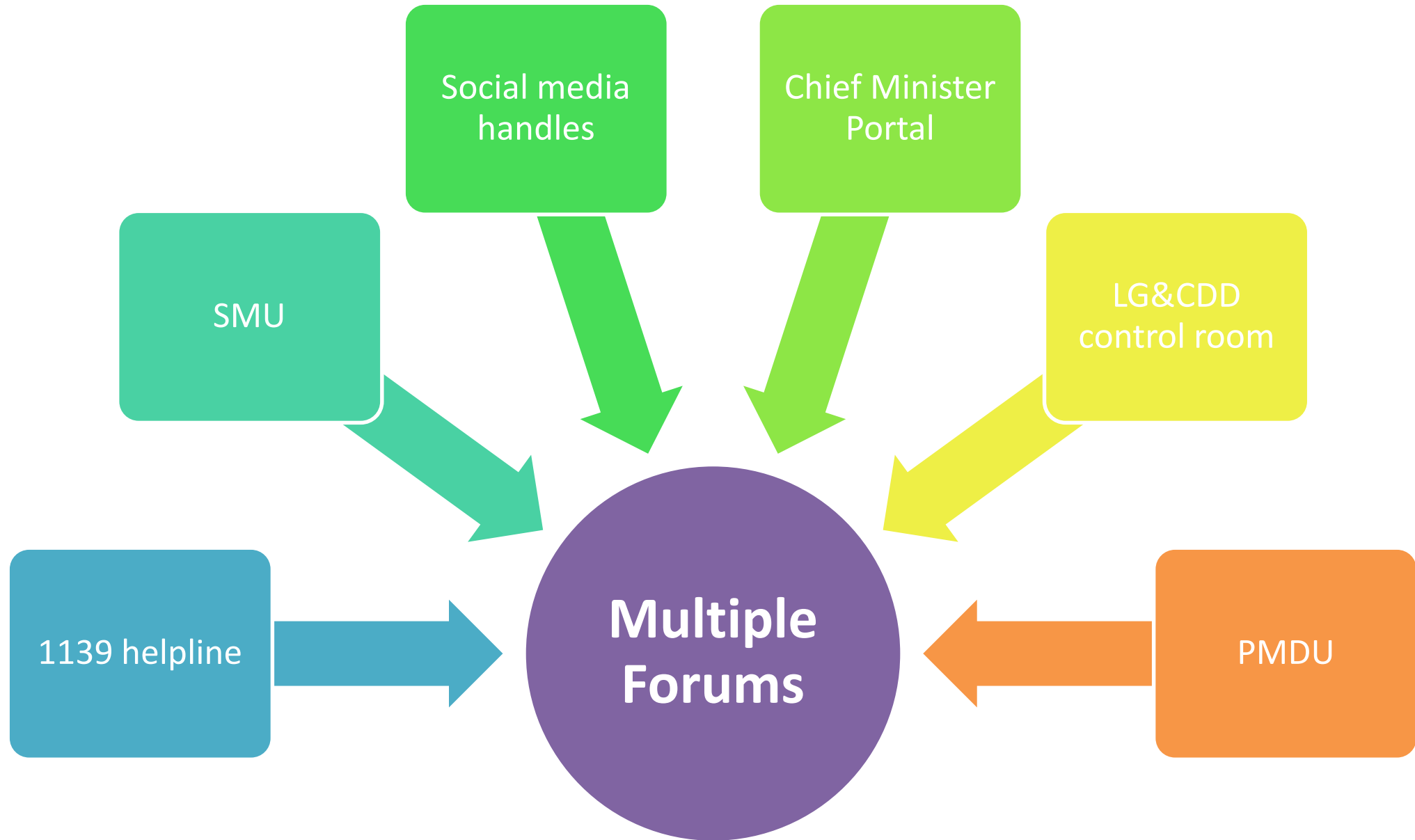


**Dedicated Vehicles**



**Daily clearance**

# COMPLAINT REDRESSAL



To raise public awareness on effective **waste segregation** and promote the **3R policy** (Reduce, Reuse, Recycle). MOU Signed between SWSSC and AHKF

## AKHTER HAMEED KHAN FOUNDATION

- Launch waste management awareness drives
- Foster source-level waste segregation
- Champion 3R (Reduce, Reuse, Recycle) practices
- Partner on waste reduction education & outreach





## Public Awareness & Education Campaign





## Monitoring, Reporting, and Feedback

- Set up Control Room for live pictorial monitoring of workers across all Tehsils
- Real-time tracking of vehicle routes and speeds
- Continuous oversight of trip counts and load weights

	Systems	Purpose
1	Vehicle Trip Counting and Management System (VTCMS)	Data is captured with a single click Vehicle name and weight capturing <b>automatically with RFID and weighbridge</b> system.
2	Vehicle Tracking and Management System (VTMS)	For <b>real-time monitoring of vehicles</b> for mid-course correction
3	Facial <b>Attendance</b> System	To capture <b>attendance of field workers</b> in the field
5	<b>Hotspot</b> Application	For <b>containers monitoring</b> (empty / full) in real-time
7	<b>Complaint Management System</b>	For Citizen feedback and facilitation: 1139 help line, PMDU, Chief Minister Complaints etc. <a href="https://suthra.punjab.gov.pk/login">https://suthra.punjab.gov.pk/login</a> , <a href="https://track.asktech.com.pk/trackwebv1/index.asp">https://track.asktech.com.pk/trackwebv1/index.asp</a> ,

## REQUIRED RESOURCES

Tehsil	HR	Machinery	Tools & Equipment
Sahiwal	1557	323	1538
Chichawatni	753	221	924
Pakpattan	910	219	968
Arifwala	769	192	839
Okara	1289	238	1213
Renala Khurd	376	102	434
Depalpur	1331	296	1380

## CHALLENGES

- Low Public Awareness
- Integration of informal sector
- Challenges in recycling (Circular Economy)
- Rapid Urbanization and Urban sprawl

**THANKS**