

IPCC Working Group II, 7th Assessment Cycle

Working Group II updates: SR Cities and AR7 contributions

Bart van den Hurk and Winston Chow
WGII Co-Chairs, IPCC AR7



Key principle

IPCC reports should be **neutral with respect to policy**, although they may need to **deal objectively with scientific, technical and socio-economic factors** relevant to the application of policies.

Working Group II AR7 products

SEVENTH ASSESSMENT CYCLE

ipcc

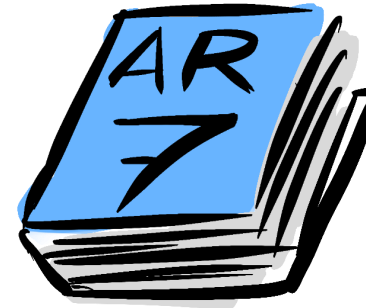
INTERGOVERNMENTAL PANEL ON climate change



**Special Report (SR) on
Climate Change and Cities**
2027



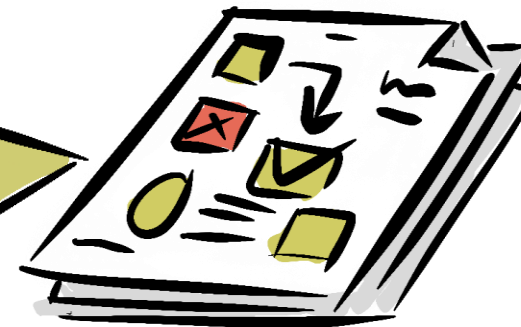
**Seventh Assessment
Report (AR7)**
~2028



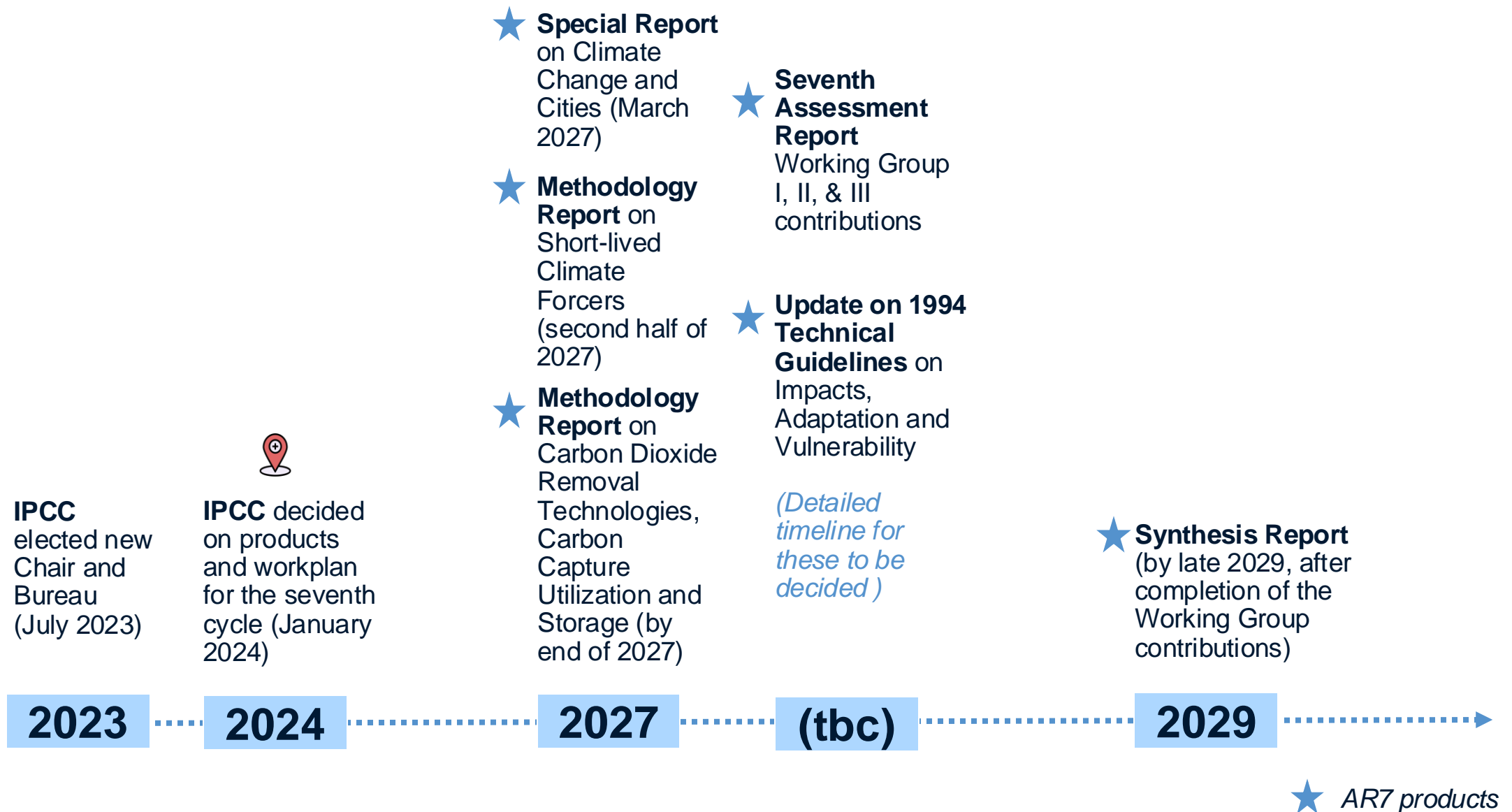
**Synthesis Report
(SYR)**
~2029



**Update of the
Adaptation
Guidelines**
*(current version
is from 1994!)*



Timeline of the 7th Assessment Cycle (AR7)





SR Cities: What we have so far

Outline of the Special Report on Climate Change and Cities

CHAPTER 1

Cities in the context of climate change: framing of the report



CHAPTER 2

Cities in a changing climate: trends, challenges and opportunities



CHAPTER 3

Actions and solutions to reduce urban risks and emissions



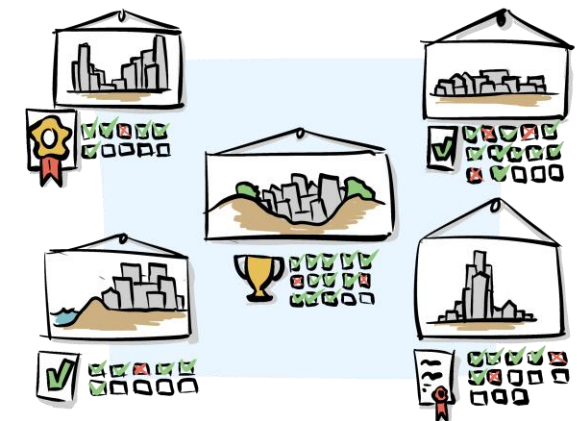
CHAPTER 4

How to facilitate and accelerate change



CHAPTER 5

Solutions by city types and regions



First Lead Author Meeting in Osaka, Japan

SEVENTH ASSESSMENT CYCLE

ipcc

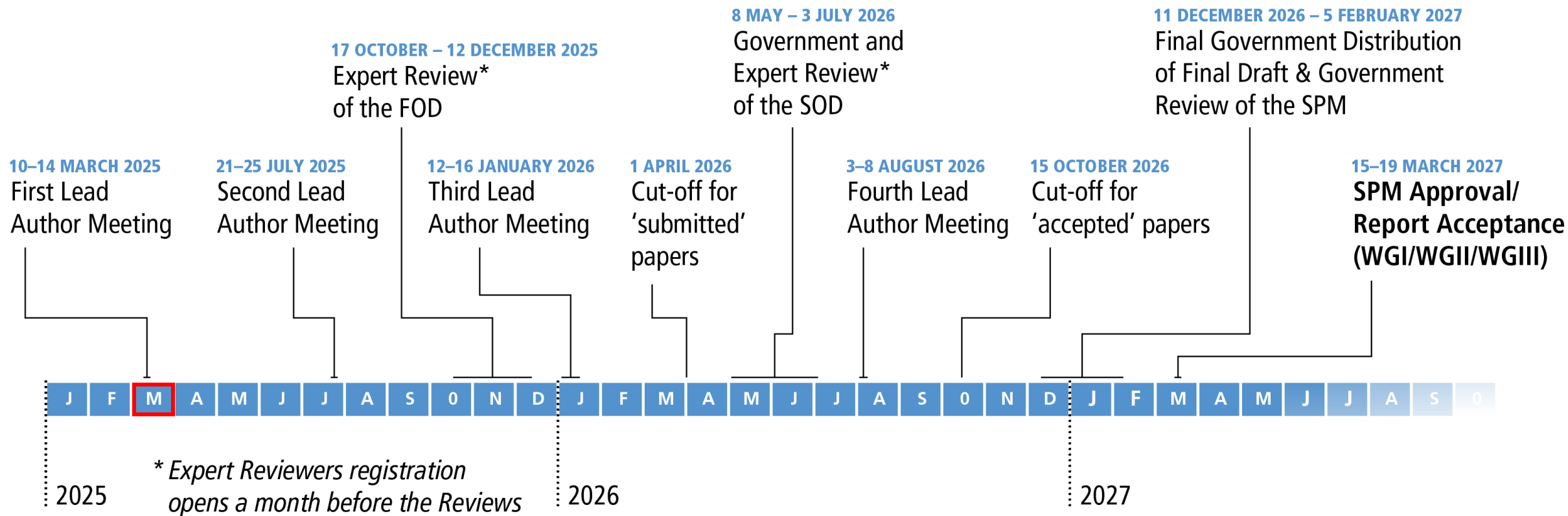
INTERGOVERNMENTAL PANEL ON climate change



UN
environment
programme



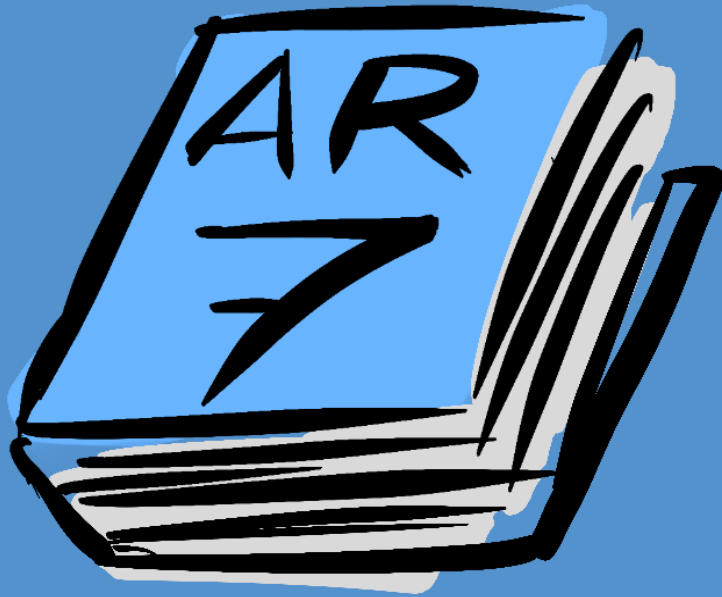
Milestones of SR Cities





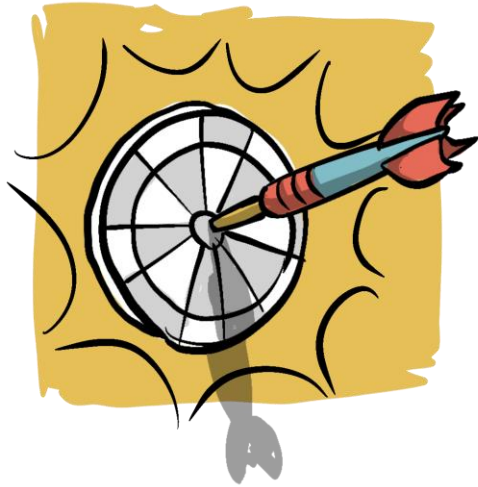
SEVENTH ASSESSMENT CYCLE

ipcc
INTERGOVERNMENTAL PANEL ON climate change



Introducing the 7th Assessment Cycle

Ambitions for AR7



Action-oriented

Working Group II's contribution to AR7 should speak to stakeholders to find *policy relevant information* that informs action and implementation

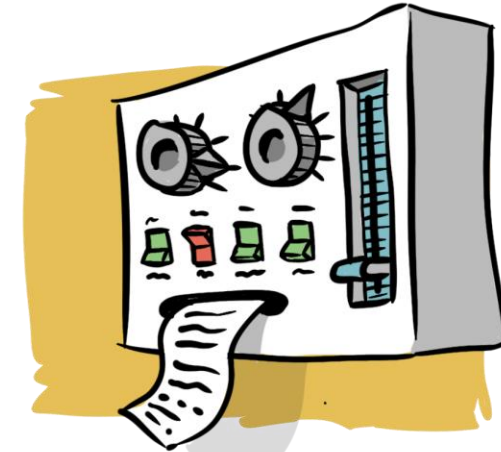
- Note: *Policy relevance* should **not** become *policy prescriptive*



Understanding context

This implies the need for “local knowledge”: what is at stake for decision-making?

- Note: this requires engagement of practitioners and policy makers, public and private, corporate and citizens



Relevance

Understanding contexts also require us to have a report that is relevant. This implies scenarios that map risks, trade-offs and transfer of costs and benefits

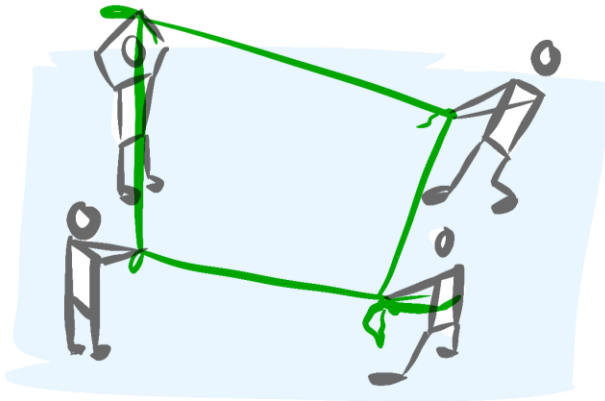
Relevance of AR7 to the urban community

Chapter 18: Adaptation of human settlements, infrastructure and industry systems

- Supply chain risk, business risk, cascading impacts, risks of failure of infrastructure systems and risks to cultural heritage
- Adapting infrastructure, industry, energy systems and human settlements to reduce risk, enhance opportunities and build response capacity at multiple levels
- Developing and utilizing climate resilient infrastructure to build adaptive capacity and support sustainable development at multiple levels
- Adaptation solutions including new technologies, methods of construction, materials and innovations, green and grey and natural infrastructure, social and behavioural change, increasing energy access in the context of sustainable development
- Relevant updates to Special Report on Climate Change and Cities

(From agreed outline of AR7 Working Group II)

Ways to get involved



◀ **Experts** can help with **scoping** – pre-scoping webinars



◀ **Scientists** can **write papers** and **compile journal special issues** – including topics emphasized in the outline



◀ **Professionals** can help with **reviews** – various versions will circulate





◀ **Stakeholder networks** can help with **outreach** (e.g. factsheets)





◀ **Authors** can help with **writing** – call for authors for AR7 Assessment reports (**deadline 27 Apr 2025**)

Thank you and follow our journey online!



 @prof.bartvdhurk
 Bart van den Hurk



 @prof.winstonchow
 Winston Chow



Scan here to join
our mailing list