

# Kobe City's Support for Overseas Expansion



Shiro Takeda

Executive Director, Future City Promotion  
Urban Planning Bureau, Kobe City Government

# Kobe City Overview



Kobe

Yokohama

Kyoto

Nagoya

Osaka

Tokyo

KOBE  
outline

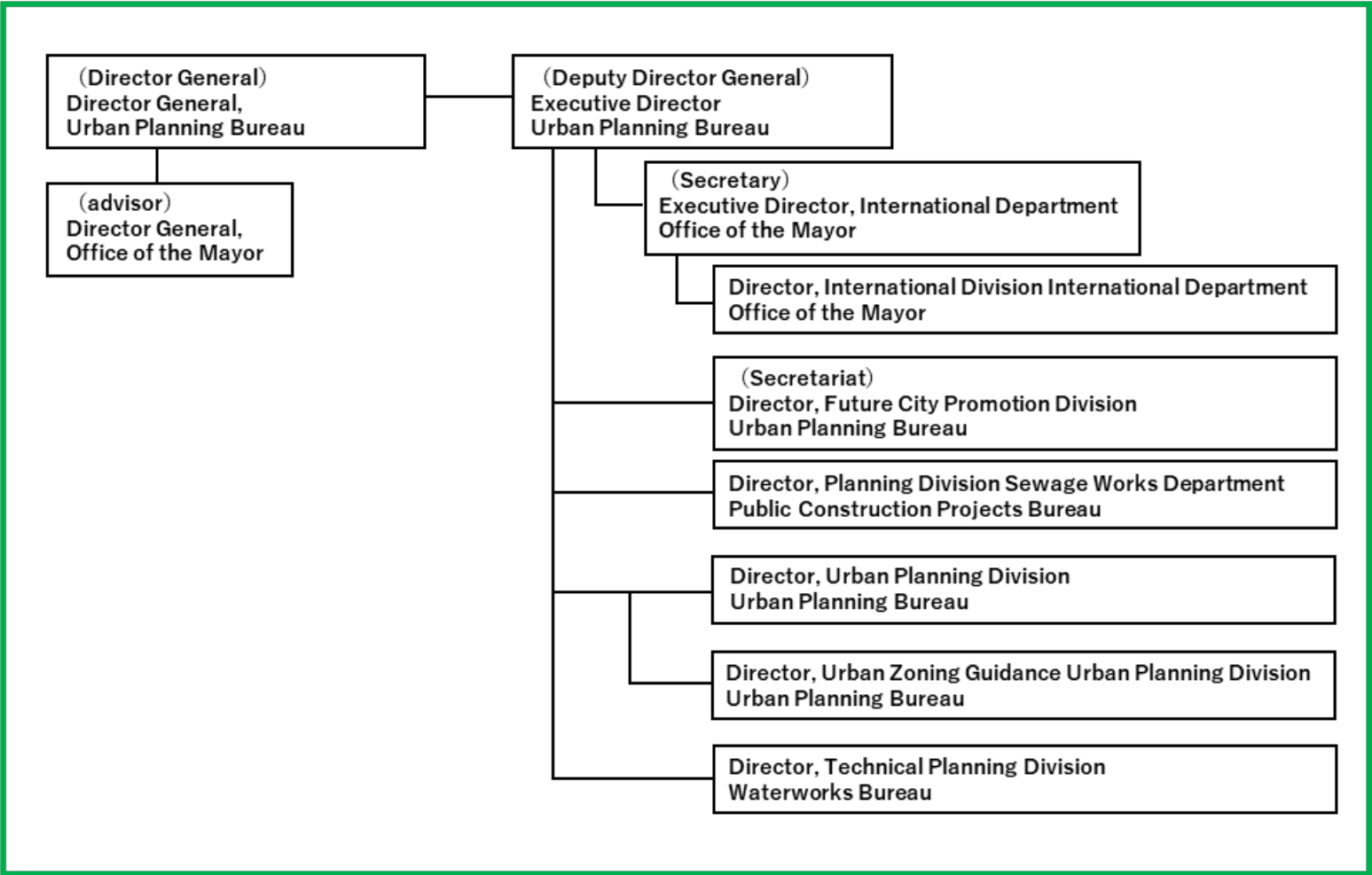
Total population  
1,490,000

Area  
557 km<sup>2</sup>

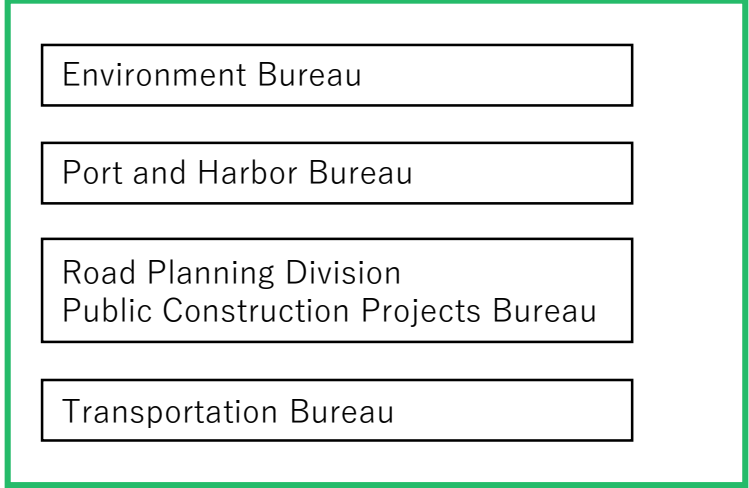


# Kobe City International Technical Cooperation Headquarters

## International Technical Cooperation Headquarters



## Related departments

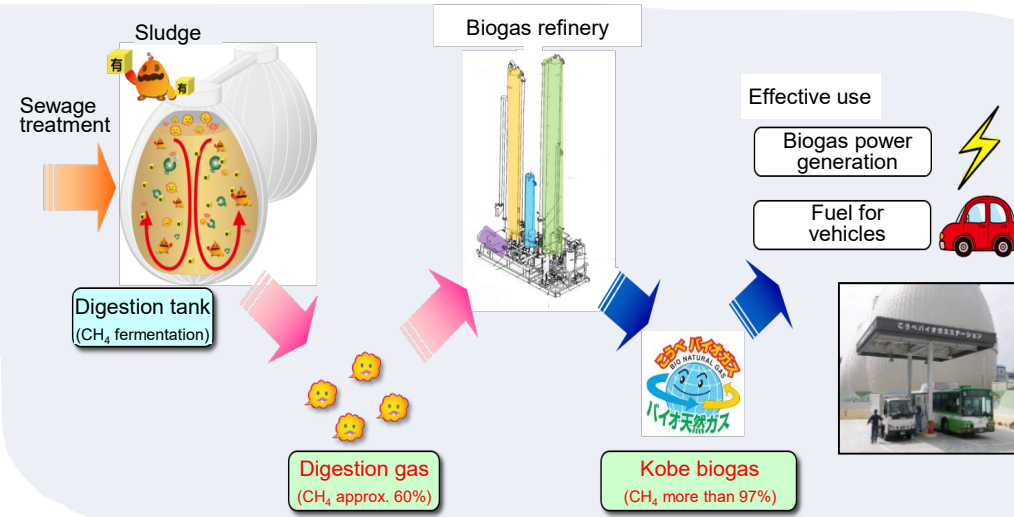




# Biomass power generation

## 【Bio-natural gas (Kobe Biogas)】

Methane gas is extracted from sewage sludge and used for power generation, etc.



## 【Waste-to-Energy】

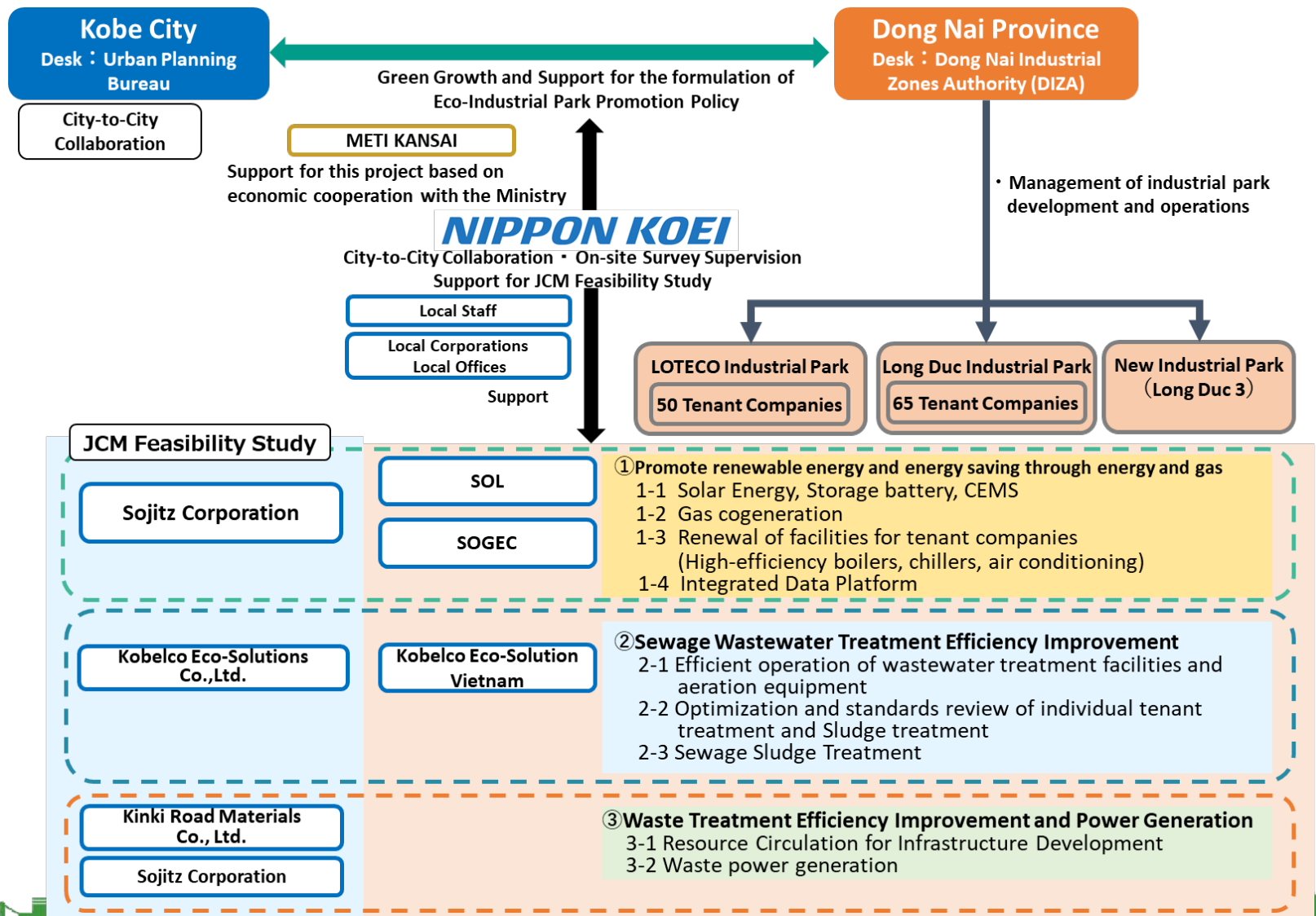
Heat from waste incineration generates electricity. The electricity is used for facility operation and any surplus is sold.

(Minatojima Clean Center)



# Collaboration with Dong Nai Province, Viet Nam

## Implementation system



MOU signing ceremony  
(Embassy of Viet Nam in Japan)



Dong Nai Province officials visit Kobe  
(Higashinada Treatment Plant)