

Contribution to Pre-disaster Prevention

Miki Sato

Senior Director

GX Business Development Department

Our Journey toward Management for Sustainability

1899

Establishment of Nippon Electric Company The Founding Spirit of "Better Products, Better Services"

Create customer satisfaction and pleasure by consistently providing better products and services.



Founder: Kunihiko Iwadare

1977

C&C Announced The Integration of Computers and Communications

The aspiration of enabling people throughout the world to connect anytime, anywhere, and with anyone, is aligned with the SDGs aspiration to "leave no one behind."



Announcement of C&C at INTELCOM 77

2013

Transformation into a Social Value Innovator

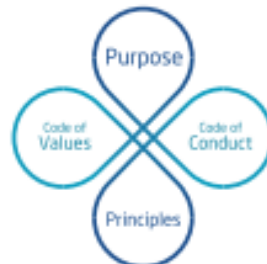
Orchestrating a brighter world

As the value expected by customers and society changed from our tangible technologies and products to the intangible creation of value, we responded under the Mid-term Management Plan 2015 by declaring our intention to transform into a Social Value Innovator.

2020

NEC Way

To mark the 120th anniversary of our founding, we revised the NEC Way.



2025

Mid-term Management Plan 2025 Seize the Future Together

In May 2021, we formulated the Mid-term Management Plan 2025, a five-year plan to achieve the NEC Way and the NEC 2030VISION. Under this plan, we are promoting purpose-driven management with strategy and culture positioned as one.

NEC 2030VISION

Life

Society

Environment

SUSTAINABLE
DEVELOPMENT
GOALS

NEC's Disaster Prevention and Mitigation Solutions

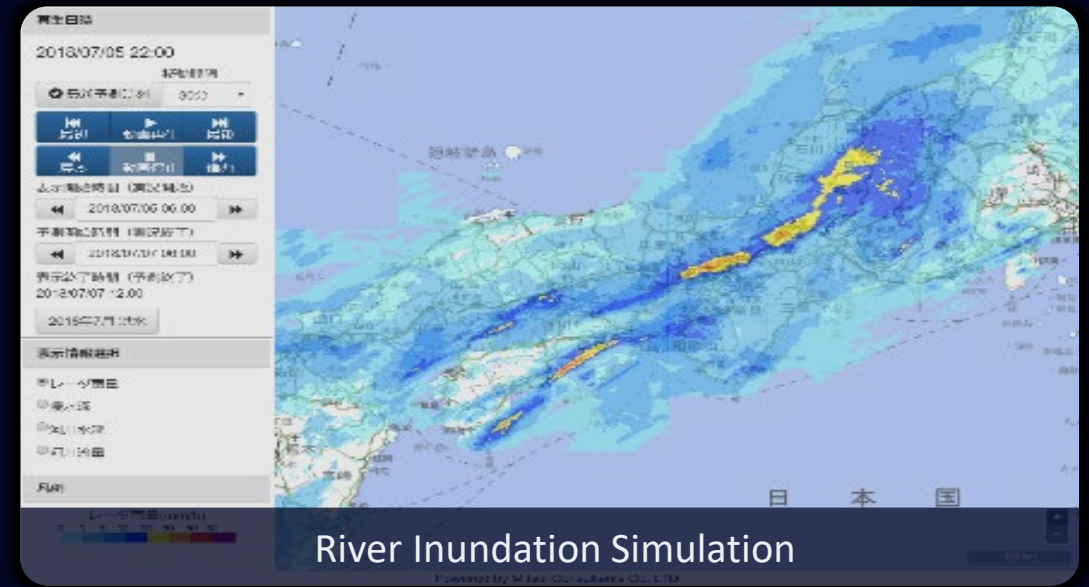
Normal

Emergency

Outbreak

First-Aid 72h

Recovery



NEC's Disaster Prevention and Mitigation Solutions

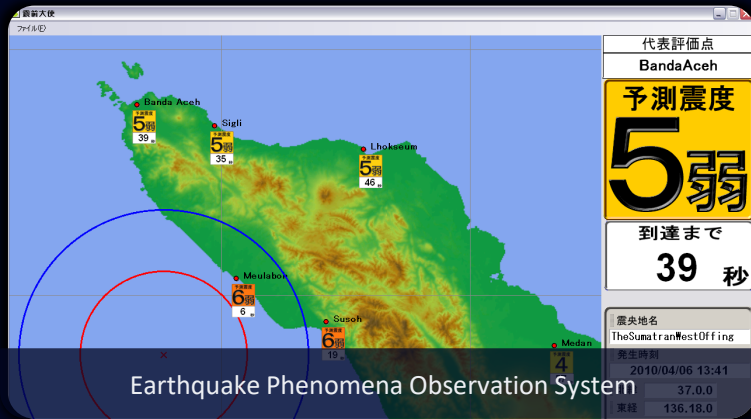
Normal

Emergency

Outbreak

First-Aid 72h

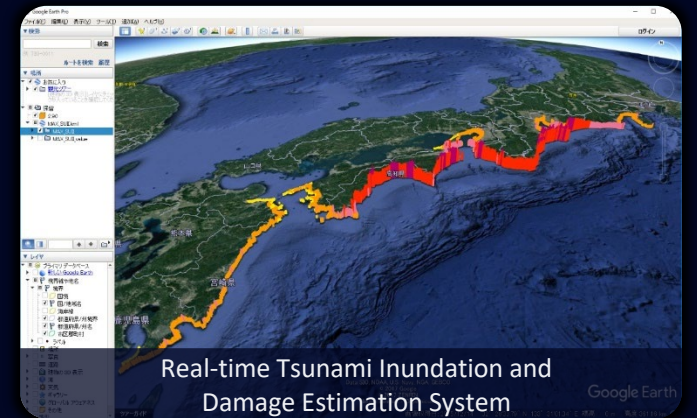
Recovery



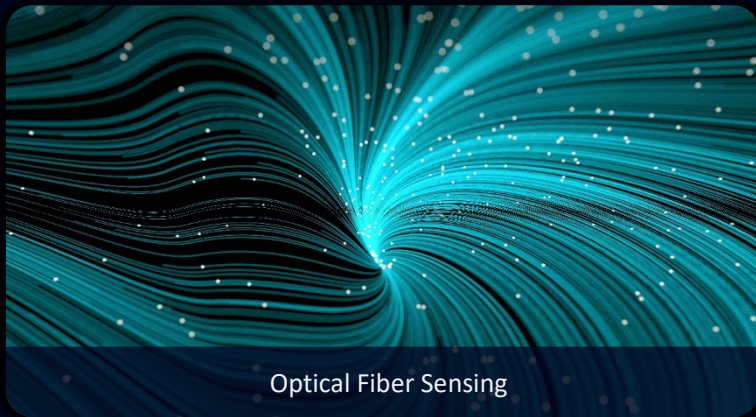
Earthquake Phenomena Observation System



Volcano Monitoring and Warning Center System



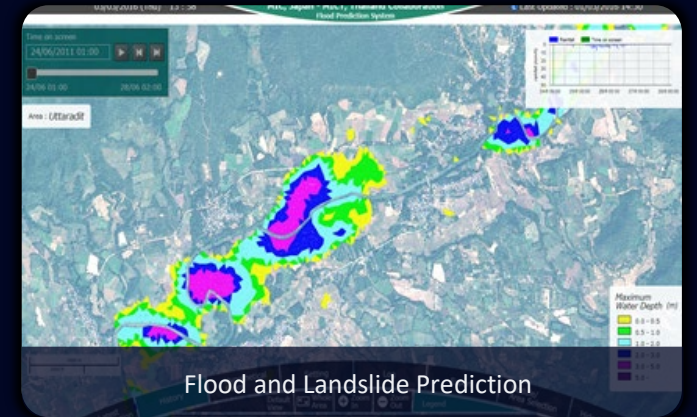
Real-time Tsunami Inundation and Damage Estimation System



Optical Fiber Sensing



Tsunami Evacuation Tower



Flood and Landslide Prediction

NEC's Disaster Prevention and Mitigation Solutions

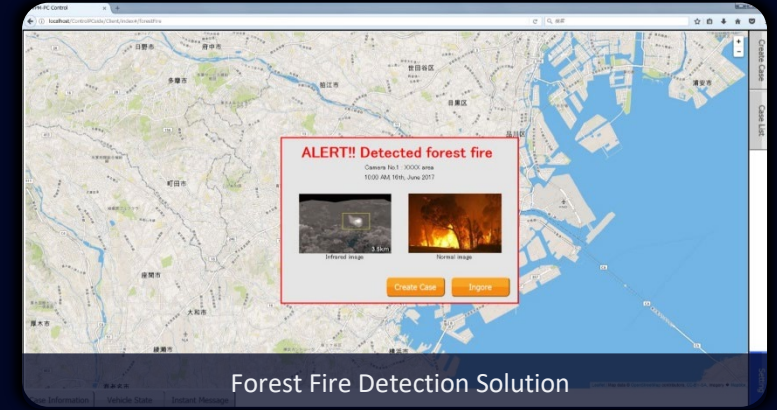
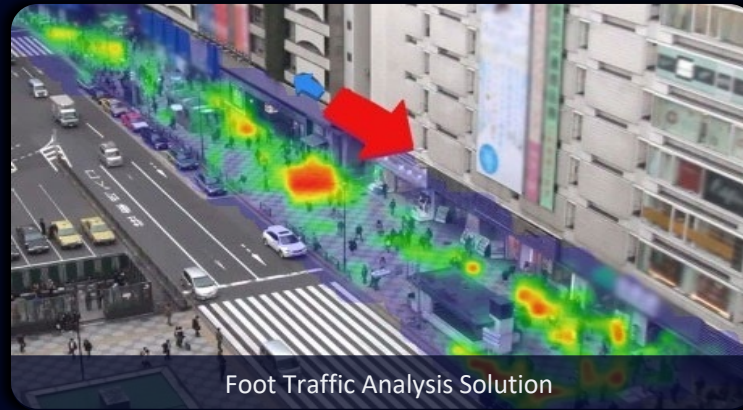
Normal

Emergency

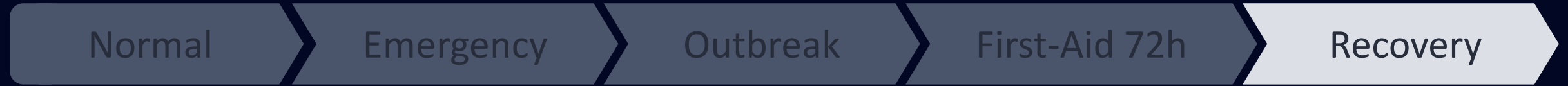
Outbreak

First-Aid 72h

Recovery



NEC's Disaster Prevention and Mitigation Solutions



Monitoring Infrastructure with SAR Satellite Service

Climate Adaptation must be Addressed

Increase in
Disasters

5x



Increase in
Economic Losses

7x



Climate Adaptation must be Addressed

GHG Emissions
from natural disasters and
reconstruction

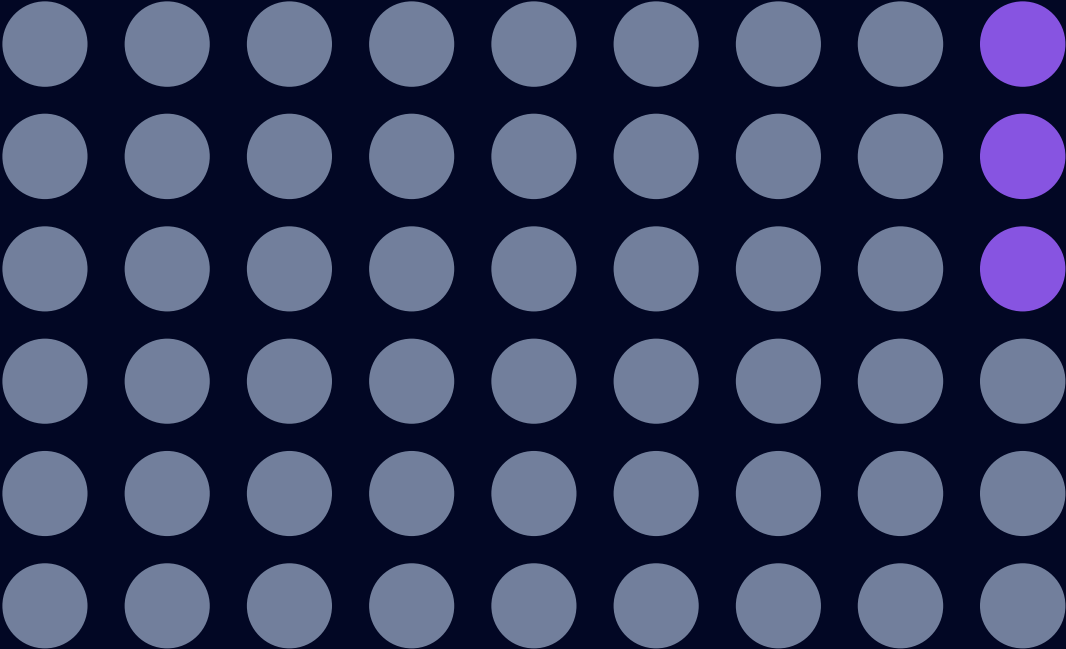
more than

10%



Adaptation Investment vs. Mitigation Investment

1/18

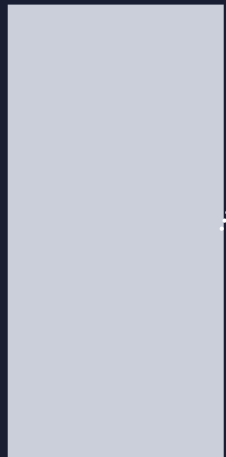


The Japan Consortium for Adaptation Finance



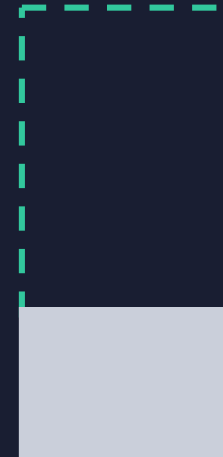
CASE 1 Public Transportation Operators

*Project with TOKYU RAILWAYS



Disaster damage \$ 12.3 million

- Cost of restoration
- Opportunity loss
- Cost to compensate for lost service



Disaster damage reduction value

\$9.1 million

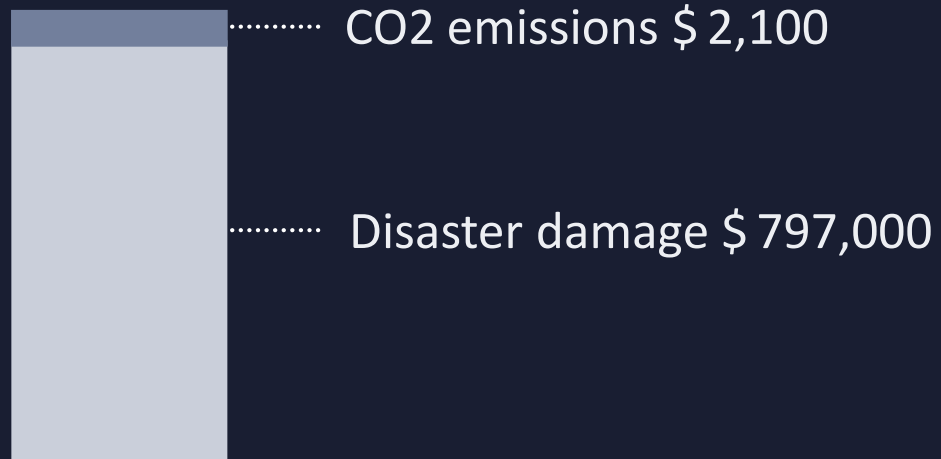
Disaster damage \$ 3.2 million

CASE 2 Energy Company

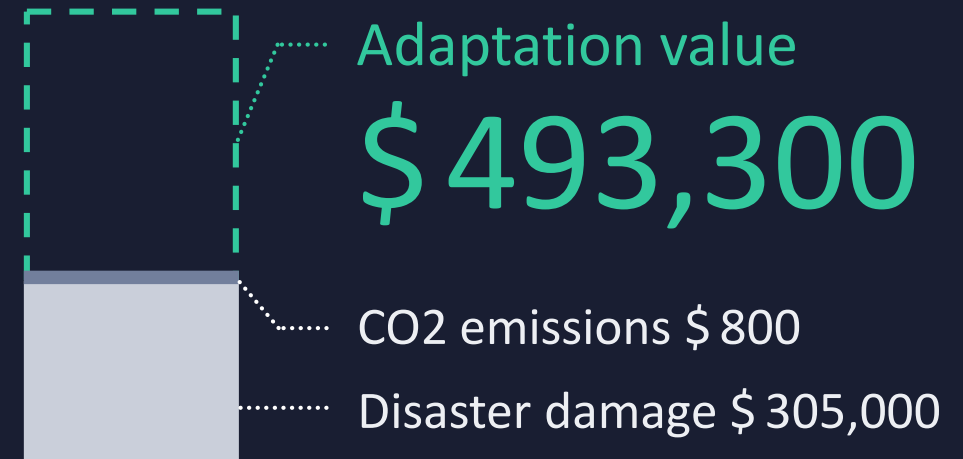
*Project with Shimizu Corporation



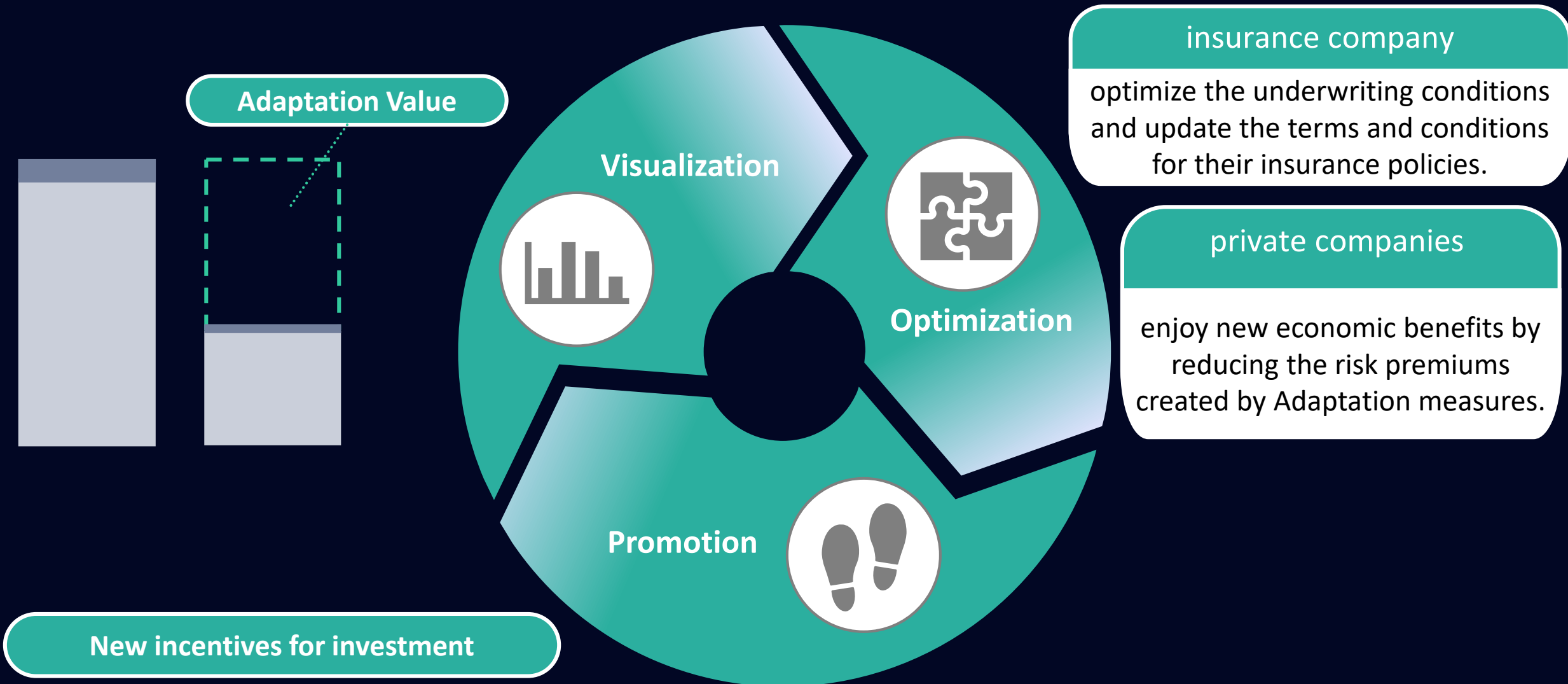
Impact
without adaptation measures



Impact
with adaptation measures

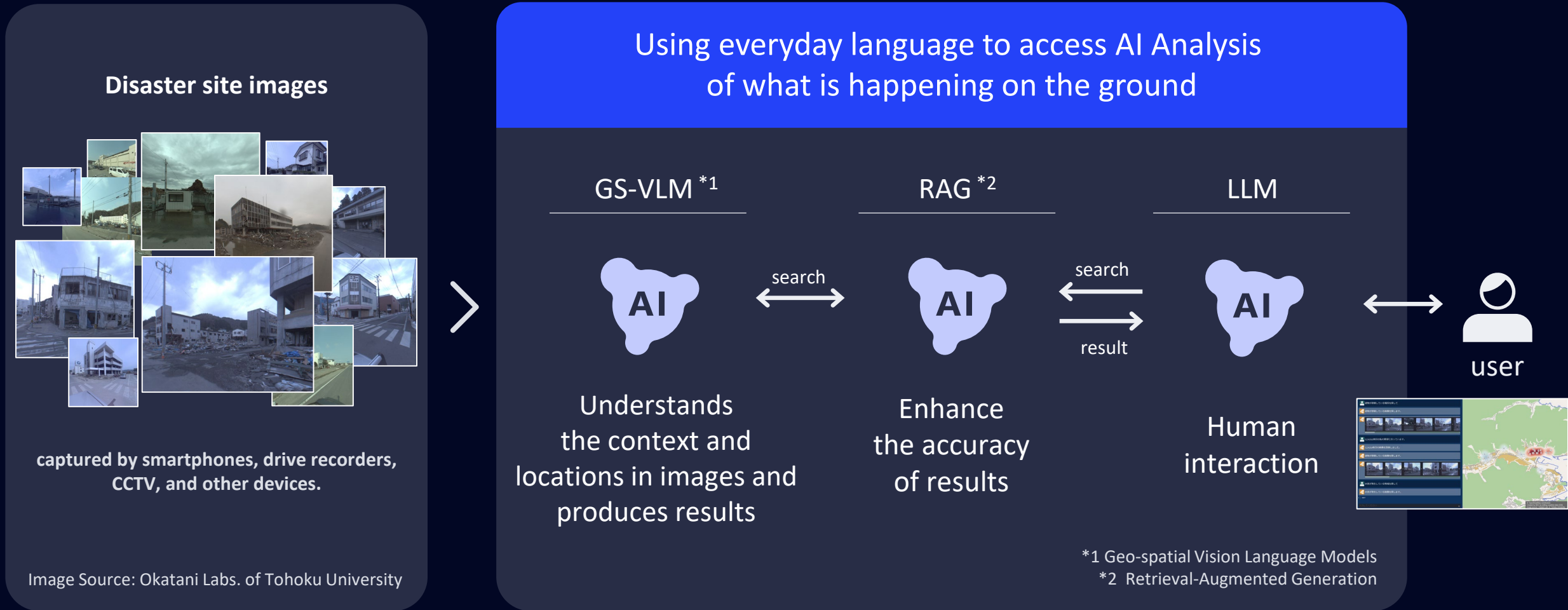


The envisioned image of capital circulation

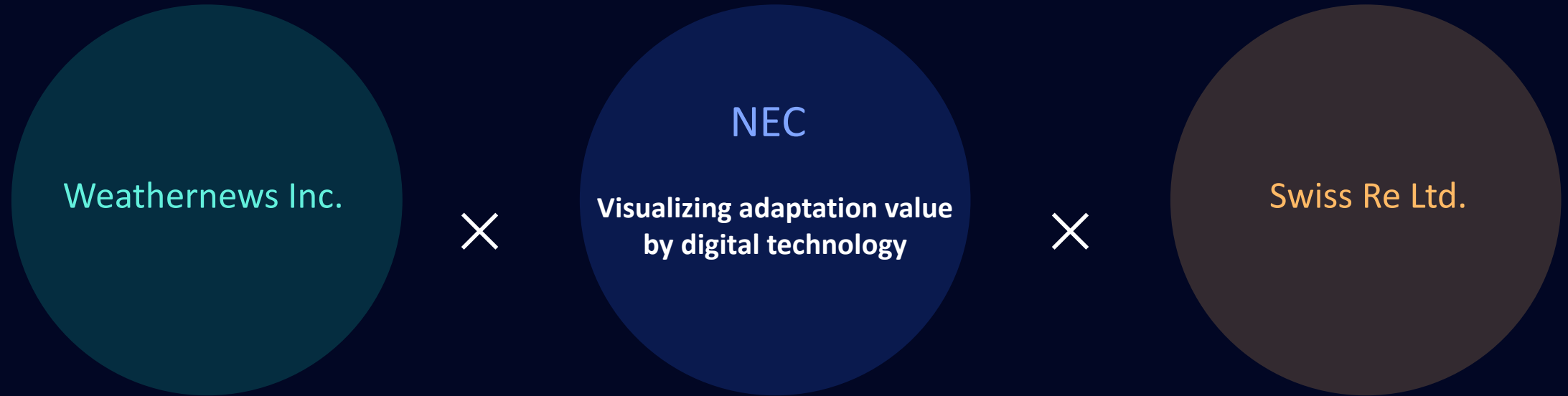




Advancing Climate Adaptation with AI and Disaster Imaginaries



Co-creation to Promote the Introduction of Disaster Prevention Measures



Accelerating adaptation for a resilient society