



IGES
Institute for Global
Environmental Strategies

About IGES

The Institute for Global Environmental Strategies (IGES) was established in April 1998 under an initiative of the Japanese government and with the support of Kanagawa Prefecture. The aim of the Institute is to achieve a new paradigm for civilization and conduct innovative policy development and strategic research for environmental measures, reflecting the results of research into political decisions for realising sustainable development both in the Asia-Pacific region and globally.

According to the charter for the establishment of IGES, the Institute will tackle fundamental challenges to human society, which only exists thanks to the bounty of the global environment. IGES will also redefine the values and value systems of our present societies, that have resulted in global environmental crises, in order to create alternate ways of conducting activities and a new paradigm for civilization. Based on the principles of this paradigm, improved social and economic systems will be built, leading to a new era for the global environment.

By recognising these crucial issues, IGES will act as an Agent of Change, conducting strategic research and operations in its broad areas of expertise (climate change and energy, sustainable consumption and production, biodiversity and forests, climate adaptation and water environment) with key stakeholders such as international organisations, national governments, local governments, research institutions, businesses, non-governmental organisations (NGO) and citizens. The Institute will generate significant impacts, such as response, recovery and redesign after COVID-19 through co-design, co-implementation, co-production and co-delivery approaches that move society towards a more sustainable and resilient future.

The decade from 2021 to 2030 is said to be the “Decisive Decade”, an important milestone that will determine the fate of the global environment in the future. 2021 marked 23 years since IGES was established, and in July its Integrative Strategic Research Programme, for the 8th Phase (ISRP8), began. The Integrated Sustainability Centre (ISC), newly established at the beginning of ISRP8, aims to further promote integrated and comprehensive cross-departmental and cross-sectoral efforts within IGES by giving concrete form to the Regional Circulating and Ecological Sphere (CES) concept, which can facilitate localisation of the SDGs. The ISC also supports key policymaking processes, for integrated governance in the Asia-Pacific and beyond.



Outline

Name of the Institute	The Institute for Global Environmental Strategies (IGES)
Inauguration	April 1998
President	TAKEUCHI Kazuhiko
No. of employees	204 (As of 30 June 2023) Strategic Research: 163 Projects for Public Interest other than Strategic Research: 22 General Administration: 22 Non-Japanese Staff: 53 (Out of total staff)
Location (Headquarters)	2108-11, Kamiyamaguchi, Hayama, Kanagawa, www.iges.or.jp/en



President’s Message

Since the beginning of 2020, the world has faced the crisis of the COVID-19 pandemic. This unprecedented experience has propelled us to envision the post-COVID society that we should be living in. This will require a reevaluation of the concentration of power in major cities and the implementation of new ways of living and working that make the most of the natural environment and advancements in information infrastructure. The “Regional Circulating and Ecological Sphere” proposed in the Fifth Basic Environment Plan of Japan aims to promote independent and decentralised use of resources and energy that relies on natural capital, as well as create a region that, through exchanges between people and information networks, closely connects Japan and other countries. This will lead to IGES’ vision of a desirable sustainable society in the post-COVID era.

I myself was deeply involved in developing the Regional Circulating and Ecological Sphere (Regional CES) concept, which calls for the integrated construction of a society that is in harmony with nature, that circulates resources, and that is decarbonised, as well as contributing to the achievement of the Sustainable Development Goals (SDGs) in the region. In order to achieve significant progress in a short period of time in the face of numerous and pressing global challenges and within the constraints of human

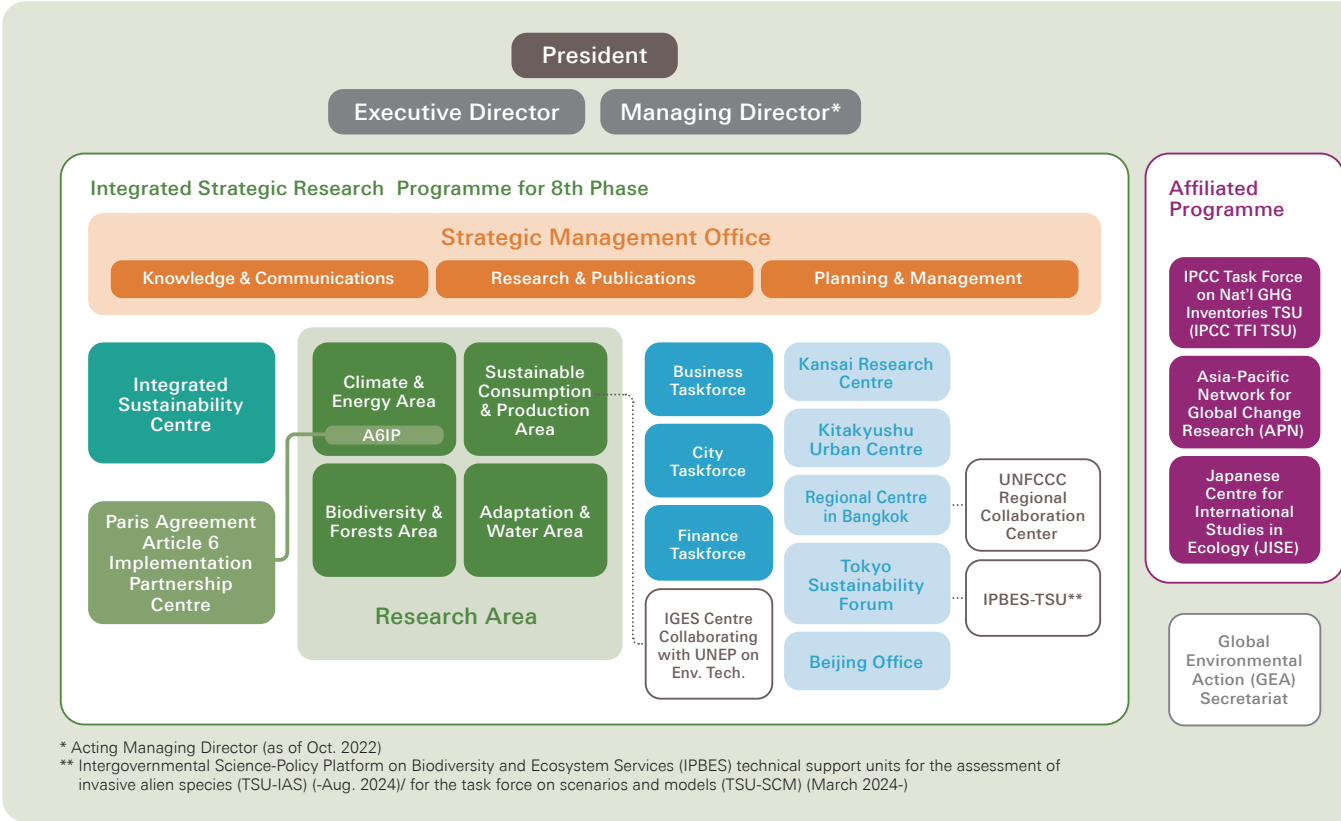
and financial resources, the most effective approach is to overcome the conventional approach of trying to address each challenge separately and to solve diverse problems simultaneously through integrated approaches. Such integrated approaches will also make significant contributions to the effective implementation of the SDGs and other international agreements currently mandated by the international community, such as the Paris Agreement on Climate Change, the Post-2020 Global Biodiversity Framework, and the Sendai Framework for Disaster Risk Reduction.



The decade from 2021 to 2030 represents a critical turning point as the ‘Decisive Decade’ that will determine the future of civilisation and the planet. As the leading environmental think-tank in the Asia-Pacific region, IGES is committed to contributing to the realisation of a sustainable future.

Kazuhiko Takeuchi
President, Institute for Global Environmental Strategies (IGES)

Organisation Chart



IGES's research activities

Integrated Sustainability Centre

The Integrated Sustainability Centre (ISC) is an interdisciplinary unit that fully integrates sustainability issues across IGES research and programming. ISC works with key stakeholders in the Asia-Pacific region to accelerate progress on achieving the SDGs and contribute to the formulation of an ambitious post-2030 agenda by strengthening the science-policy-society interface.

The unit's research and activities will apply the following approaches:

- (1) Science-based quantitative tools and methods, e.g. analyses of SDG interlinkages and socioeconomic scenarios
- (2) Sustainability governance models and strategies, e.g. SDG governance and business, co-benefits and co-innovation, inclusive transition and environmental justice
- (3) Cutting-edge policy integration frameworks and solutions, e.g. the Circulating and Ecological Sphere (CES), synergies between climate, SDGs, and biodiversity

Such tools and approaches will be used to develop practical case studies and support key policymaking processes.



Climate Change & Energy

While climate change poses an increasing threat worldwide, the adoption of the Paris Agreement in 2015 formalises the international community's commitments and actions toward a sustainable and decarbonised society. The Climate and Energy (CE) area aims to accompany this transition by conducting strategic research and supporting the development of zero-carbon initiatives. Our team of international experts is engaged in various projects for the development and implementation of climate and energy-related strategies and policies, in particular international climate negotiations, bilateral and multilateral cooperation, carbon pricing initiatives, market-based mechanisms, and the development and maintenance of databases. With a special focus and expertise on the Asia-Pacific region, the CE Area serves as an agent of change by maximising efforts to facilitate transition to decarbonised society at the national and local levels.

Paris Agreement Article 6 Implementation Partnership (A6IP) Centre

The Secretariat of the Paris Agreement Article 6 Implementation Partnership has been established at IGES since 2023 to promote capacity building for the implementation of Article 6, which states the market mechanism for climate change.

Sustainable Consumption and Production

Concerted efforts by governments, local authorities, business and civil society are crucial to create societies that guarantee decent living for everyone while mitigating climate change, conserving terrestrial and marine ecosystems, and preventing soil, water and air pollution. The Sustainable Consumption and Production (SCP) area is a centre of excellence for international policy research on SCP. It aims to contribute to sustainable societies through transforming the entire life cycle of products and services, spanning production, consumption, disposal and recycling. SCP's activities cover the following three areas:

- (1) Practical research on multi-stakeholder collaboration toward creating decarbon-

ised and prosperous lifestyles in local communities

- (2) Mainstreaming of the circular economy and reduction of plastic waste at the global, regional and national scales
- (3) Policy support and capacity-building on integrated waste management at the national and local levels in emerging and developing countries

SCP hosts the IGES Centre Collaborating with UNEP on Environmental Technologies (CCET) which works with UN agencies, international partners and governments in Asia to support less developed economies for sustainable waste and resource management.



Biodiversity & Forest

"Biodiversity" is an expression of a fundamental feature of life on Earth: its astonishing variety. An estimated eight million species inhabit our planet, forming countless ecosystems at various scales. Such ecosystems provide services that are essential to human wellbeing. Now, the rapid loss of biodiversity, accelerated by the climate crisis, is increasingly recognised as one of the core challenges of our time. In Asia and the Pacific, the conservation of forests is of particular relevance in tackling climate change. In response, IGES' Biodiversity and Forests (BDF) experts participate in international policymaking, conduct various hands-on projects, and contribute regularly to scientific literature and policy recommendations on this topic. Current focus areas include timber legality policy, and socio-ecological production landscapes and seascapes.



Adaptation and Water

In the realm of adaptation, the Adaptation and Water (AW) area aims to build societies resilient to climate change risks, particularly in the Asia-Pacific region. The adaptation team contributes to the development and implementation of international adaptation policies and the work of the Intergovernmental Panel on Climate Change (IPCC), among others. The team also works on the Asia-Pacific Climate Change Adaptation Information Platform (AP-PLAT) and promotes projects and research on critical challenges to adaptation, such as integrating adaptation and disaster risk reduction, introducing nature-based solutions, and promoting locally-led adaptation.

Meanwhile the water team promotes projects and research to address various important issues related to water quality conservation, including the deployment of decentralised wastewater treatment systems for domestic wastewater and solutions to the issue of microplastics. The water team also contributes to improving the water environment in Asia by serving as the secretariat of the Water Environment Partnership in Asia (WEPA), which was established to strengthen water environment governance in the region.



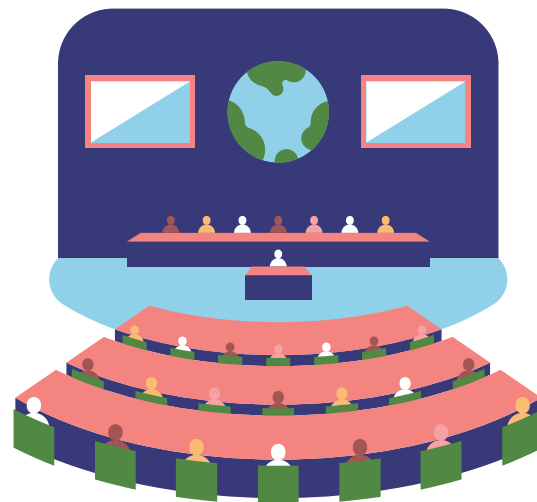
IGES's research activities

Business Taskforce

IGES's Business Taskforce conducts market and policy research in Japan and beyond, examining business opportunities and risks driven by climate change, as well as the relevance of corporate behaviour and corporate value in addressing long-term decarbonisation. Based on this research, the Taskforce also provides policy recommendations and support to businesses and the government. Among other initiatives, the Taskforce serves as the Secretariat of the Japan Climate Leaders' Partnership (JCLP), a coalition of over 200 companies, encouraging them to lead a positive momentum towards net-zero emissions in the private sector and to contribute to progress on climate policies in Japan.

City Taskforce

Cities are important actors in achieving the targets of both the Paris Agreement and the SDGs. The City Taskforce engages in research and projects, co-creating solutions towards carbon neutral, resilient and sustainable societies in collaboration with relevant stakeholders. The Taskforce facilitates the sharing of solutions and strategies among like-minded cities, and contributes to enhancing implementation capacity at the city level, working together with regional and international organisations and networks.



Finance Taskforce

Delivering on the SDGs and commitments under the Paris Agreement requires the entire financial system to mainstream them into their practices and policies. Much progress has been made over the past few years, but we are still far from achieving these targets. To achieve a net zero society and climate resilient sustainable development, the Finance Taskforce is engaged in policy research and recommendations as well as capacity building, with geographical focus on Japan, the wider Asian region, and the EU. Specific areas are sustainable finance, sustainable financial products such as green bonds, the actual environmental and social impact of finance, financial disclosure on climate-related risks, and financial flows related to the SDGs.

Strategic Management Office

The Strategic Management Office (SMO) oversees and coordinates the implementation of strategic research from a comprehensive perspective, in order to maximise IGES' impact-making and dissemination capabilities as a change agent. The SMO is responsible for the functions of knowledge and communication (e.g. promoting involvement in key international and national processes, co-creation and collaboration with other institutions and organisations, public relations and outreach), quality management of research outputs (e.g. review of publications, promotion of seed research) and business management (e.g. finance, human resources, development of the office's infrastructure).

Kansai Research Centre

The Kansai Research Centre (KRC) carries out research focusing on the international transfer and promotion of low-carbon environmental technologies, and works with the private sector to support the establishment of regional circular and ecological spheres in Hyogo Prefecture, under the theme of "Business and the Environment". In addition, KRC contributes to environmental efforts and climate actions in Hyogo Prefecture, through projects such as the Hyogo RE100 Project, the Joint Lecture on Decarbonised Societies with Kobe University, and the Decarbonised Society Workshops for high school students in Hyogo prefecture.

Kitakyushu Urban Centre

The Kitakyushu Urban Centre (KUC) aims to be a local hub for zero-carbon cities, proposing measures and disseminating best practices to encourage municipalities in Kyushu to make the transition to a decarbonised society. Under city-to-city collaboration between municipalities that include Kitakyushu and overseas cities, KUC supports the transfer and implementation of environmental measurements and technologies, and works to make practical changes at the local level under the themes of decarbonisation, circular economy, green growth and the SDGs.



Regional Centre in Bangkok

The activities of the Regional Centre in Bangkok (BRC) focus on six key areas: climate change adaptation, climate change mitigation, environmental safeguards, sustainable consumption, global environmental outlook and local and city initiatives. As IGES' main arm for collaborating with local and international partners in the region, BRC works closely with them to deliver real change on the ground by facilitating dialogue, conducting research and sharing replicable practices that are useful for policymakers. In 2015, the United Nations Framework Convention on Climate Change (UNFCCC) established its fifth Regional Collaboration Centre at BRC to promote Clean Development Mechanism (CDM) activities in the Asia-Pacific. BRC hosted an EU initiative on sustainable consumption and production in Asia, named "Switch Asia", and has contributed to this since 2017.

Beijing Office

The Beijing Office was established within the Sino-Japan Friendship Center for Environmental Protection of the Ministry of Environmental Protection of China (MEP) in July 2006 as a base to carry out research activities in China more flexibly. It has a pivotal role in developing various studies and research activities bilaterally between Japan and China, as well as multilaterally.

Tokyo Sustainability Forum

TSF is IGES' base in Tokyo, carrying out projects and holding events to facilitate impact generation in collaboration with Tokyo-based national organisations and various stakeholders. TSF works closely with the IPBES TSU-IAS and ICLEI Japan, both of which share office space with TSF.

IGES Affiliated Organisations

Asia-Pacific Network for Global Change Research (APN)

APN is an intergovernmental network of 22 countries, working towards a dynamic and responsive Asia-Pacific community by effectively addressing global change and sustainability through innovative and transdisciplinary research and capacity development activities.

Japanese Center for International Studies in Ecology (IGES-JISE)

JISE carries out practical surveys and research to restore, regenerate and create forestry and vegetation at the regional and global levels, in order to move towards the establishment of a sustainable society from the perspective of plant ecology.

Intergovernmental Panel on Climate Change, Task Force on National Greenhouse Gas Inventories - Technical Support Unit (IPCC TFI TSU)

The IPCC TFI TSU was established within IGES in 1999. It supports the IPCC TFI to develop and promote IPCC guidelines and relevant tools for estimating and reporting of national greenhouse gas emissions and removals.

Intergovernmental Science-Policy Platform on Biodiversity and Ecosystem Services (IPBES)

Technical support unit for the assessment of invasive alien species (TSU-IAS) (-Aug. 2024)

TSU-IAS supports the production and uptake of the IPBES assessment report on invasive alien species.

Technical support unit for task force on scenarios and models (TSU-SCM) (March 2024-)

TSU-SCM aims to provide support for promoting the refinement of nature future scenarios and models and their application in policy development.

Global Environmental Action (GEA) Secretariat

IGES supports GEA's activities which contribute to the solution of global environmental issues and sustainable development through the planning and organisation of international conferences and related operations as the secretariat.

List of Board members and Auditor (in alphabetical order, as of April 2024)

Trustees	Prof. Xuemei BAI	Distinguished Professor, Urban Environment at Fenner School of Environment and Society, Australian National University
	Dr. Matthew Michael McCandless	Associate Vice-president and Managing Director (Manitoba), International Institute for Sustainable Development (IISD)
	Prof. MIMURA Nobuo	Specially Appointed Professor, Global and Local Environment Co-creation Institute (GLEC), Ibaraki University
	Dr. Wijarn SIMACHAYA	President, Thai Environment Institute (TEI)
	Mr. SUZUKI Masaki	Chairman, AEON Financial Service Co., Ltd.
	Prof. TAKAMURA Yukari	Professor, Institute for Future Initiatives (IFI), University of Tokyo
	Ms. YOSHITAKA Mari	Fellow, (Sustainability), Mitsubishi UFJ Research and Consulting Co., Ltd. / Visiting professor, College of Arts and Sciences, The University of Tokyo / Part-time lecturer, Graduate school of Media and Governance, Keio University / Representative Director, Virtue Design
Directors	Prof. TAKEUCHI Kazuhiko	President, Institute for Global Environmental Strategies; Project Professor, Institute for Future Initiatives (IFI), University of Tokyo
	Mr. TAKAHASHI Yasuo	Executive Director, Institute for Global Environmental Strategies
	Dr. ISHII Naoko	Special Presidential Envoy for Global Commons, The University of Tokyo Professor, Institute for Future Initiatives, Director, Center for Global Commons
	Mr. NISHIZAWA Keiji	Executive Advisor, Sampo Japan Insurance Inc.
	Prof. OTSUKA Tadashi	Professor, Law School and Faculty of Law, Waseda University
	Prof. Dr. Miranda A. SCHREURS	Professor, Chair of Environmental and Climate Policy, Bavarian School of Public Policy, Technical University of Munich
Auditors	Mr. HASEGAWA Ken	Lawyer
	Mr. YASUDA Hiroyuki	Certified public accountant

History

January 1995	Proposal to establish the Institute for Global Environmental Strategies (IGES; a private consultative body of the Prime Minister)
April 1998	Establishment of the Institute for Global Environmental Strategies
September 1999	Establishment within IGES of the Technical Support Unit (TSU) for the Intergovernmental Panel on Climate Change (IPCC) Task Force on National Greenhouse Gas Inventories
October 1999	Establishment of the Kitakyushu Office
June 2001	Establishment of the Kansai Research Centre
April 2003	IGES is granted Special Consultative Status under the United Nations Economic and Social Council (UN ECOSOC)
May 2003	Opening of the IGES Bangkok Project Office
April 2004	IGES becomes the Secretariat for the Asia-Pacific Network for Global Change Research (APN)
July 2006	Opening of the Beijing Office
April 2007	The Japanese Center for International Studies in Ecology (JISE) merges with IGES
April 2010	The Kitakyushu Office is renamed the Kitakyushu Urban Centre
June 2011	Opening of the IGES Regional Centre in Bangkok
April 2012	IGES transitions to become a public interest incorporated foundation
March 2015	Establishment of the IGES Centre Collaborating with UNEP on Environmental Technologies (CCET) at IGES HQ
April 2015	Establishment of Intergovernmental Science-Policy Platform on Biodiversity and Ecosystem Services (IPBES) TSU for the Regional Assessment for Asia and the Pacific (TSU-AP)
September 2015	Establishment of the UNFCCC-IGES Regional Collaboration Centre (RCC) in IGES Regional Centre in Bangkok
February 2019	Establishment of IPBES TSU for the assessment of invasive alien species (IAS)
April 2023	Establishment of Paris Agreement Article 6 Implementation Partnership Centre (A6IP)
March 2024	Establishment of IPBES TSU on the scenarios and models (SCM)
April 2024	Establishment of Global Environmental Action (GEA) Secretariat