

IGES Research Activities

IGES conducts practical and solution-oriented research focusing on the Asia-Pacific region in order to develop innovative policy approaches and propose environmental policies to achieve sustainable development in the region.



Environment

Climate and Energy (CE)

Contributing towards the realisation of low-carbon development in the Asia-Pacific region, through the creation of climate regime at the international, regional, country and local levels, and production of energy policy research outcomes.

- ◆ Future Climate Regime
- ◆ Energy Modelling Analysis
- ◆ GHG Mitigation Reduction Action Plan
- ◆ Measurement, Reporting and Verification (MRV) of GHG Emissions Reductions
- ◆ Climate Finance
- ◆ Market Mechanisms

Sustainable Consumption and Production (SCP)

Conducting research activities to achieve sustainable consumption and production in Asian countries, and making corresponding changes in business practices and lifestyles for people's well-being.

- ◆ Sustainable Consumption and Production
- ◆ Resource Circulation and Integrated Waste Management
- ◆ Fukushima Action Research on Effective Decontamination Operation (FAIRDO)

Natural Resources and Ecosystem Services (NRE)

Building resilient societies through the sustainable management and use of natural resources.

- ◆ Forest and Biodiversity Conservation
- ◆ Adaptation for Climate Change
- ◆ Water Resource Management



Economy

Green Economy (GE)

Aiming to change from the current unsustainable development path onto one which improves human well-being, social equity and natural capital through green investment, creating green jobs and adopting low-carbon and resource-efficient technologies.

- ◆ Transition to Green Economy
- ◆ Green Investment and Green Jobs

Business and Environment (Kansai Research Centre)

Promoting sustainable business and propelling innovation, diffusion and transfer of low-carbon technologies in the Asia-Pacific region.

- ◆ Transfer and Application of Low-Carbon Technologies
- ◆ Policies towards Low-Carbon Technologies Diffusion



Society

Integrated Policies for Sustainable Societies (IPSS)

Considering not only environmental concerns, but also exploring ways of making substantial revisions and changes in existing socio-economic systems in the process of transitioning to sustainable societies, through the participation and empowerment of diverse stakeholders.

- ◆ Post 2015 Development Agenda / Sustainable Development Goals
- ◆ Education for Sustainable Development
- ◆ Co-benefit Approach

Sustainable Cities (Kitakyushu Urban Centre)

Supporting sustainable city development using low-carbon models, with cross-cutting analysis of environmental policies transmitted at the local government level.

- ◆ Development of Smart Cities
- ◆ Initiatives of Environmental Cities/Eco-Cities
- ◆ Networking Environmental Cities/Eco-Cities



Overseas Operations

Regional Centre

Strengthening IGES's partnerships with key stakeholders in the region and engaging in activities to facilitate environmental policy development.

Beijing Office

Conducting bilateral cooperation between Japan and China in the area of environment.

IGES Institute for Global Environmental Strategies

Global Network

Signatory Organisations and Institutions of the Charter for the Establishment of IGES Total: 48
(Alphabetical order)

- ◆ **National Administrative Organisations [16]**
 - Department of the Environment, Water, Heritage and the Arts (Australia)
 - Ministry of Environment (Cambodia)
 - Environment Canada (Canada)
 - Ministry of Environmental Protection (China)
 - Ministry of Environment and Forests (India)
 - State Ministry of Environment (Indonesia)
 - Ministry of the Environment (Japan)
 - Ministry of Environment (Korea)
 - Water Resources and Environment Administration (Lao P.D.R.)
 - Ministry of Natural Resources and Environment (Malaysia)
 - Ministry of Environment and Green Development (Mongolia)
 - Ministry of Environment, Science and Technology (Nepal)
 - Ministry for the Environment (New Zealand)
 - Department of Environment and Natural Resources (The Philippines)
 - Ministry of Natural Resources and Environment (Thailand)
 - Ministry of Natural Resources and Environment (Vietnam)
- ◆ **Research and Academic Institutions [26]**
 - Asia-Pacific Centre for Environmental Law (Singapore)
 - Center for International Environmental Law (USA)
 - Earth Council (Costa Rica)
 - Global Industrial and Social Progress Research Institute (Japan)
 - Indira Gandhi Institute of Development Research (India)
 - Institute of Development Studies, University of Sussex (UK)
 - Institute of Southeast Asian Studies (Singapore)
 - Institute of Strategic and International Studies (Malaysia)
 - International Academy of the Environment (Switzerland)
 - International Global Change Institute, Waikato University (New Zealand)
 - International Institute for Environment and Development (UK)
 - International Institute for Sustainable Development (Canada)
 - International Institute for Applied Systems Analysis (Austria)
 - Korea Energy Economics Institute (Korea)
 - Korea Environment Institute (Korea)
 - National Institute for Environmental Studies (Japan)
 - Potsdam Institute for Climate Impact Research (Germany)
 - Sino-Japan Friendship Center for Environmental Protection (China)
 - Stockholm Environment Institute (Sweden)
 - Thailand Development Research Institute Foundation (Thailand)
 - Thailand Environment Institute (Thailand)
 - The Energy and Resources Institute (India)
 - VTT Technical Research Centre of Finland (Finland)
 - World Resources Institute (USA)
 - Worldwatch Institute (USA)
 - Wuppertal Institute for Climate, Environment and Energy (Germany)
- ◆ **International Organisations [6]**
 - International Tropical Timber Organization (ITTO)
 - United Nations Centre for Regional Development (UNCRD)
 - United Nations Economic and Social Commission for Asia and the Pacific (UNESCAP)
 - United Nations Environment Programme (UNEP)
 - United Nations Institute for Training and Research (UNITAR)
 - United Nations University/Institute of Advanced Studies (UNU-IAS)

Access Information

BY TRAIN

From Tokyo

- By JR Yokosuka Line. Get off at JR Zushi Station.
- By JR Shonan-Shinjuku Line. Get off at JR Zushi Station.
- By Keihin Kyuko (Keikyu) Line. Get off at Keikyu Shinzushi Station.

From Narita Airport

- By JR Sobu (Rapid) Line 'Airport Narita'. Get off at Zushi Station.
- By JR Narita Express. Change at Yokohama Station to JR Yokosuka Line. Get off at Zushi Station.

From Haneda Airport

- By Keikyu Line Airport Express, take a train from Keikyu Haneda Station heading for Keikyu Shinzushi. Get off at Shinzushi Station.

From JR Zushi Station or Keikyu Shinzushi, take Keikyu Bus (No.16). Get off at Shonan Kokusaimura Center Mae.

BY BUS

From either JR Zushi Station or Keikyu Shinzushi Station

- Take bus No.16 for Shonan Kokusaimura Center Mae. Get off at Shonan Kokusaimura Center Mae.

From Yokohama City Air Terminal

- Take bus for Denryoku Chuo Kenkyujo, which leaves from bus stop number 6 at YCAT. Get off at Shonan Kokusaimura Center Mae.

<http://www.iges.or.jp/en/access/>

Institute for Global Environmental Strategies
 2108-11, Kamiyamaguchi, Hayama, Kanagawa, 240-0115, Japan
 Tel: +81-46-855-3700 Fax: +81-46-855-3709 E-mail: iges@iges.or.jp URL: http://www.iges.or.jp/



- Tokyo Office**
 Shinbashi SY Bldg. 4F, 1-14-2, Nishi-shinbashi, Minato-ku, Tokyo, 105-0003, Japan
 Tel: +81-3-3595-1081 Fax: +81-3-3595-1084
- Kansai Research Centre**
 East Bldg. 5F, Disaster Reduction and Human Renovation Institution, 1-5-2, Wakinohama-kaigandori, Chuo-ku, Kobe, Hyogo, 651-0073, Japan
 Tel: +81-78-262-6634 Fax: +81-78-262-6635
 E-mail: kansai@iges.or.jp
- Kitakyushu Urban Centre**
 International Village Center 3F, 1-1-1, Hirano, Yahatahigashi-ku, Kitakyushu, Fukuoka, 805-0062, Japan
 Tel: +81-93-681-1563 Fax: +81-93-681-1564
 E-mail: kitakyushu-info@iges.or.jp
- Beijing Office**
 IGES Sino-Japan Cooperation Project Office, Room No. 1114, 11F, Sino-Japan Friendship Center for Environmental Protection, No.1 Yuhuananlu, Chaoyang District, Beijing, 100029, China
 E-mail: beijing-office@iges.or.jp
- Regional Centre**
 604 SG Tower 6F, 161/1 Soi Mahadlek Luang 3, Rajdamri Road, Patumwan, Bangkok, 10330, Thailand
 Tel: +66-2-651-8794, 8795, 8797, 8799 Fax: +66-2-651-8798
 E-mail: regionalcentre@iges.or.jp
- IPCC TFI Technical Support Unit (TSU)**
 2108-11, Kamiyamaguchi, Hayama, Kanagawa, 240-0115, Japan
 Tel: +81-46-855-3750 Fax: +81-46-855-3808
- Asia-Pacific Network for Global Change Research (APN) Secretariat**
 East Bldg. 4F, Disaster Reduction and Human Renovation Institution, 1-5-2, Wakinohama-kaigandori, Chuo-ku, Kobe, Hyogo, 651-0073, Japan
 Tel: +81-78-230-8017 Fax: +81-78-230-8018
- Japanese Center for International Studies in Ecology (JISE)**
 Shinyokohama Daiichi Bldg. 3F, 2-14-27, Shinyokohama, Kohoku-ku, Yokohama, Kanagawa, 222-0033, Japan
 Tel: +81-45-548-6270 Fax: +81-45-472-8810
- Intergovernmental Science-Policy Platform on Biodiversity and Ecosystem Services (IPBES) Technical Support Unit for the Asia-Pacific Regional Assessment (TSU-AP)**
 Shinbashi SY Bldg. 4F, 1-14-2, Nishi-shinbashi, Minato-ku, Tokyo, 105-0003, Japan
 Tel: +81-3-3595-1081 Fax: +81-3-3595-1084



Towards a Sustainable Asia-Pacific

Heading towards Sustainable Society

The Institute for Global Environmental Strategies (IGES) was established in 1998 under an initiative of the Japanese government and with the support of Kanagawa Prefecture. Since April 2012, IGES has been conducting practical and innovative research as a public interest incorporated foundation, aiming to realise sustainable development in the Asia-Pacific region



This region is seeing rapid economic development, and with that comes urbanisation, lifestyle changes, and a rapid transformation of land-use from forests to land for other purposes. There is also an accompanying upsurge in resource consumption. Various environmental problems are emerging, such as depletion of natural resources including air, water and forests that support people's lives, and an increase in waste products, as well as burgeoning GHG emissions. Another huge issue facing this region is on-going poverty. To overcome these problems and realise a sustainable society, what we need is a model that differs from existing development patterns. It is essential that we develop low-carbon, resource-saving strategies for this new model, based on new values.

We have been implementing research activities based on the Sixth Phase Integrative Strategic Research Programme since April 2013. As we forge greater links with national governments, local authorities, international organisations, research institutes, businesses, NGOs and local communities, we are moving forward with problem-solving research on a low-carbon, resource-saving and sustainable Asia-Pacific. At the same time, we continue to make effective policy proposals through being proactively involved in relevant policy-making processes for international society, and at national and local levels. In this way, we hope to work as a "change agent", facilitating the transition to a sustainable society and improving the well-being of people in the region.

Hironori Hamanaka

Chair, Board of Directors
Institute for Global Environmental Strategies (IGES)

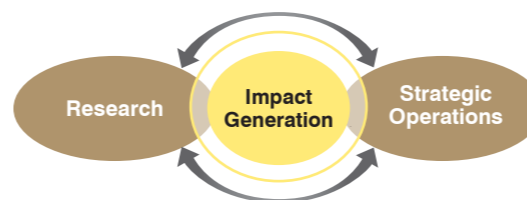


Institute for Global Environmental Strategies (IGES) Hayama Headquarters
<Design and Supervision by Nikken Sekkei Ltd.>

IGES Headquarters building is situated in Hayama-machi, Kanagawa Prefecture and uses the latest technology to make maximum use of natural assets including solar energy, light, wind, rainwater and greenery.

IGES Strategic Operations

Strategic operations including networking, capacity building, knowledge management and outreach are essential for maximising the impacts of IGES research to promote policy changes for sustainable development. The Programme Management Office (PMO) plays a central role in these strategic operations.



Initiatives and Networks

- Global Research Forum on Sustainable Production and Consumption (GRF-SPC)
- International Research Network for Low Carbon Societies (LCS-RNet)
- Asia-Europe Environment Forum (ENVforum)
- Regional 3R Forum in Asia
- Asia Pacific Adaptation Network (APAN)
- Asia Pacific Water Forum (APWF) KnowledgeHubs
- Water Environment Partnership in Asia (WEPA)
- Low Carbon Asia Research Network (LoCARNet)
- Asian Co-benefits Partnership (ACP)
- Clean Asia Initiative (CAI)
- Asian City Network for Environmental Improvement (Kitakyushu)
- ASEAN Environmentally Sustainable Cities (ESC) Model Cities Programme
- Asian Environmental Compliance and Enforcement Network (AECEN)
- Sustainable Development Planning Network for Asia-Pacific (SDplanNet-Asia&Pacific)
- The Japan Committee for International Institute for Applied Systems Analysis (IIASA)

IGES Affiliated Organisations

Intergovernmental Panel on Climate Change (IPCC) TFI Technical Support Unit (TSU)
Established at IGES in 1999, TSU supports the activities of the IPCC Task Force on National Greenhouse Gas Inventories (TFI) to develop and publish international guidelines for the calculation and reporting of national greenhouse gas emissions and removals.

Asia-Pacific Network for Global Change Research (APN)
The APN is an inter-governmental network of 22 member countries whose mission is to foster global change research in the Asia-Pacific region. The APN Secretariat came under the administrative umbrella of IGES in April 2004.

Japanese Center for International Studies in Ecology (JISE)
JISE carries out practical field surveys and research for restoration and creation of sound ecosystem and promotes training in environmental and ecological studies. JISE was integrated into IGES in April 2007.

Intergovernmental Science-Policy Platform on Biodiversity and Ecosystem Services (IPBES) Technical Support Unit for the Asia-Pacific Regional Assessment (TSU-AP)
Established at IGES in 2015, the TSU serves as a supporting institution to IPBES in the drafting of the report on the Regional Assessment on biodiversity and ecosystem services for Asia and the Pacific.

Outreach

Publications and Databases

IGES publishes its research results and findings in a wide range of publications including the IGES White Paper, policy briefs and policy reports. Research results and information are compiled in the form of databases. All research outputs can be found online.



Symposia and Workshops

IGES organises international meetings and workshops in various countries. Seminars and symposia are also held in Japan and are open to the public.



E-mail News "E-Newsletter"

The latest research activities and related news and events are sent out in the e-mail newsletter.

For further information and to download research results, please visit the IGES website

<http://www.iges.or.jp>

About IGES

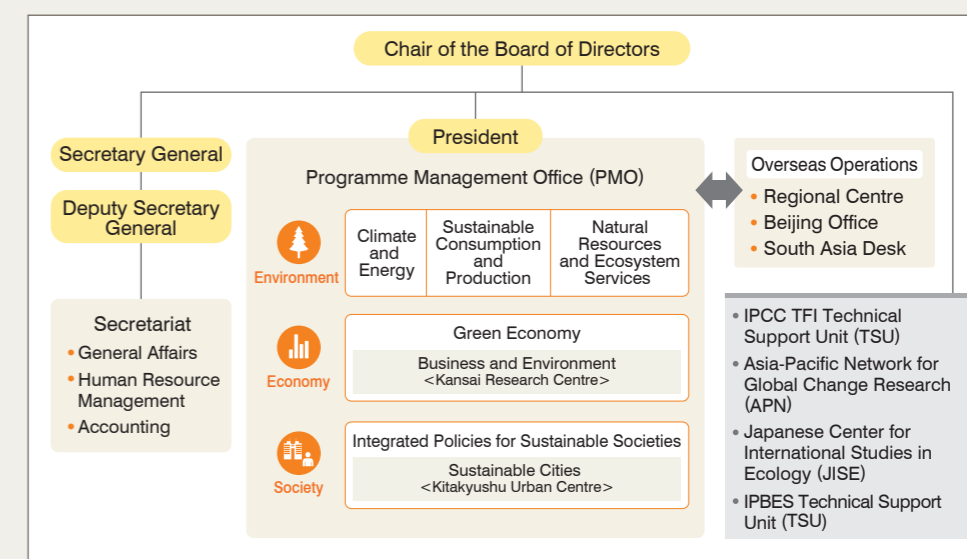
Institute for Global Environmental Strategies (IGES)

31 March 1998 Establishment
1 April 2012 Transition to a public-interest incorporated foundation

List of the Board members and Auditors

Trustees	Directors	Auditors
Langston James "Kimo" Goree VI Vice-President, Reporting Services and United Nations Liaison, International Institute for Sustainable Development (IISD)	Hironori Hamanaka Chair of the Board of Directors, Institute for Global Environmental Strategies	Ken Hasegawa Lawyer
Bindu N. Lohani Former Vice-President, Knowledge Management and Sustainable Development, Asian Development Bank; Distinguished Adjunct Faculty, Asian Institute of Technology (AIT)	Hiroko Kono Senior Writer, The Yomiuri Shimbun	Shigeru Hataji General Manager, Shinbashi Department No.2, Mizuho Bank, Ltd.
Nobuo Mimura President, Ibaraki University	Hideyuki Mori President, Institute for Global Environmental Strategies	
Yasuhiko Okada Attorney at Law, Partner, Kitahama Partners (Tokyo Office)	Ikufumi Niimi Professor, Faculty of Law, Meiji University	
Takejiro Sueyoshi Special Advisor, United Nations Environment Programme Finance Initiative	Miranda A. Schreurs Director of the Environmental Policy Research Centre and Professor of Comparative Politics, Freie Universität Berlin	
Yukari Takamura Professor, Graduate School of Environmental Studies, Nagoya University	Mikio Shoji Visiting Professor, Massachusetts Institute of Technology	
Abdul Hamid Zakri Science Adviser to the Prime Minister of Malaysia	Kazuhiko Takeuchi Director and Professor, Integrated Research System for Sustainability Science (IR3S), The University of Tokyo Institutes for Advanced Study (UTIAS)	

(Alphabetical order, as of July 2016)



Personnel

(As of March 2016)

	Short-term Employees	Non-Japanese Employees
Research Employees		
Strategic Research Project	92 (16)	(39)
Projects for Public Interest other than Strategic Research	18 (3)	(7)
Administrative Employees		
General Administration	34 (11)	(7)
Research Support	37 (13)	(2)
Projects for Public Interest other than Strategic Research	9 (2)	(0)

Total 190 (45) (55)

Subtotal in brackets for short-term and non-Japanese employees.

Affiliate Membership

The Affiliate Membership Programme was established to publicise IGES activities. The benefits of becoming an affiliate member include opportunities to participate in IGES symposia and workshops, as well as to receive IGES publications and e-mail news regularly. For further details, please contact the IGES Secretariat on

TEL: +81-46-855-3700 or sanjosem@iges.or.jp

<http://www.iges.or.jp/en/about/membership.html>