

MAINSTREAMING ADAPTATION INTO DEVELOPMENT

Everybody's business is nobody's business!

Presented at IGES-TERI Asia Pacific Dialog on Sustainable Low-Carbon Development in Asia:
Prospects for a Successful Future Climate Regime, 22-23 October 2009, Le Meridien Hotel, New
Delhi, India

S. V. R. K. Prabhakar, Policy Researcher,
IGES

Outline

- Understanding Mainstreaming
- Current limitations
- Essential processes for mainstreaming
 - ▣ Identify entry points
 - ▣ Decision making frameworks for mainstreaming
 - ▣ Measuring progress in mainstreaming
- Conclusion

Defining Mainstreaming

Adaptation

□ “ ‘Integrating’ policies and measures to address climate change into developmental planning and sectoral decision making” – RJT Kelin, 2006

□ “Information, policies and measures addressing climate change are ‘streamed’ into ongoing, general **development planning and decision making**” – Huq and Ayers, 2008.

Environment

□ “...**encompassing** the process(es) by which environmental considerations are brought to the attention of **organisations and individuals** involved in decision-making ...” – IIED, 2008

□ “...mainstreaming refers to the integration of environmental considerations into **core institutional thinking and decision-making**. - UNDP, 2009

DRR

□ “...fully incorporate disaster risk reduction into **relief and development policy and practice**– Tearfund, 2005

Pros and Cons of Mainstreaming

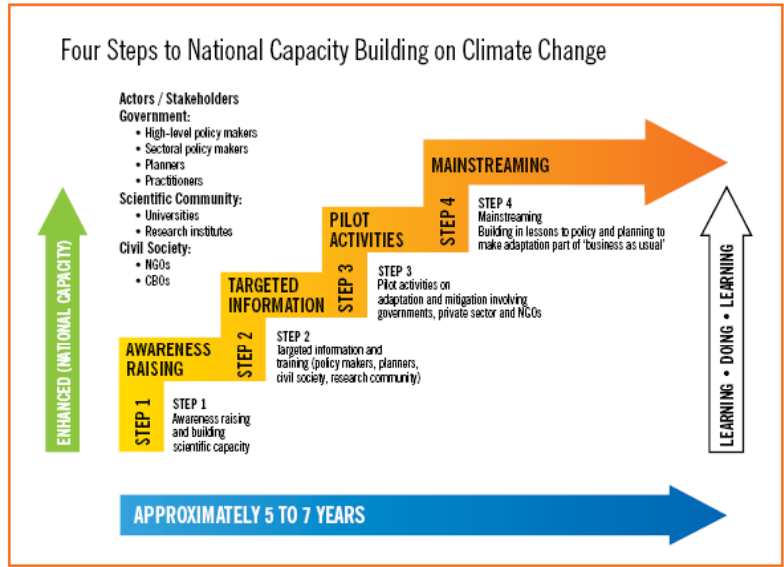
Pros

- Reduces costs:
Synergies and complementarities
- Capacity building:
conscious process
- Helps in maturing the concept and identify gaps in knowledge
- Better interaction among stakeholders
- Generates ownership

Cons

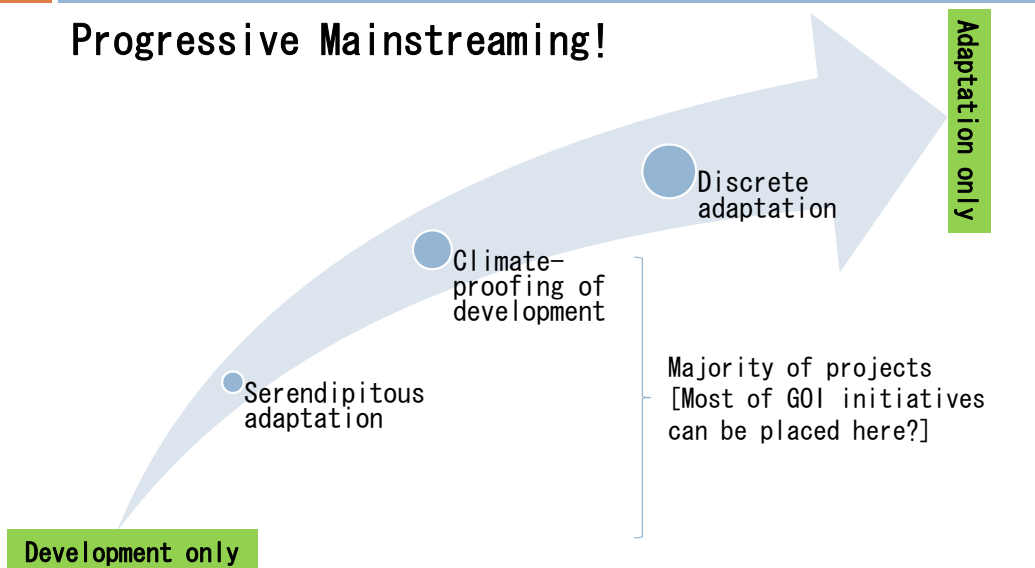
- Everybody’ s business is nobody’ s business!
- Difficult to monitor?
- Reporting procedures become complicated (donor disadvantage: where my funds spent?)
- Mainstreaming fatigue!

Mainstreaming: A Progressive Process



Current Status of Adaptation

Progressive Mainstreaming!



Limitations

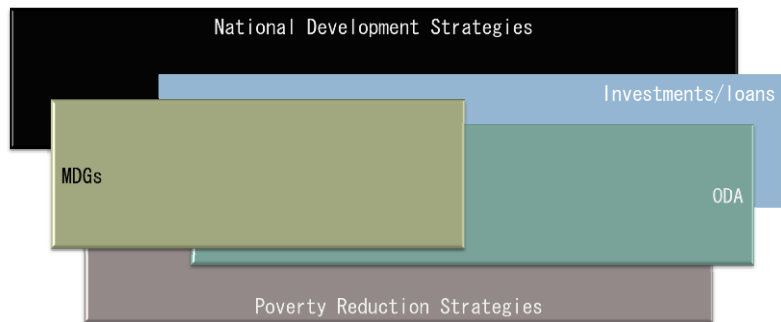
- The way in which the current developmental programs are planned and implemented:
 - ▣ Short-term actions vs long-term endeavor of adaptation
 - ▣ Fragmented: multiple stakeholders
 - ▣ lack of accessible data
 - ▣ more financial reporting than actual outcomes
- Multiple sources of finances and hence reporting procedures
- Lack of skills and other capacity constraints

Implementing Mainstreaming

- **Identify entry points**
- **How much to mainstream?**
- **Clear decision making framework**
 - ▣ Make it participatory: to seek consensus among stakeholders
 - ▣ Install a conscious and deliberate process: All stakeholders understand the meaning of mainstreaming (Information)
 - ▣ Establish a dedicated 'body' that
 - Assign roles and responsibilities
 - Set 'rules of the game'
 - Monitors and evaluates the progress
- Provide a clear outlay of resources: Finances
- **Measure the progress in mainstreaming**
- Capacity building

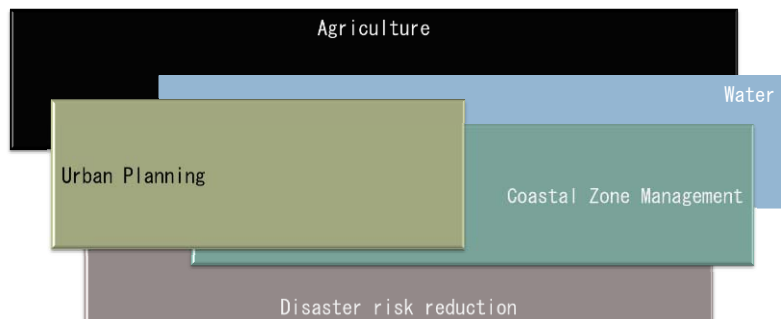
Entry Points for Mainstreaming

Opportunity Group I



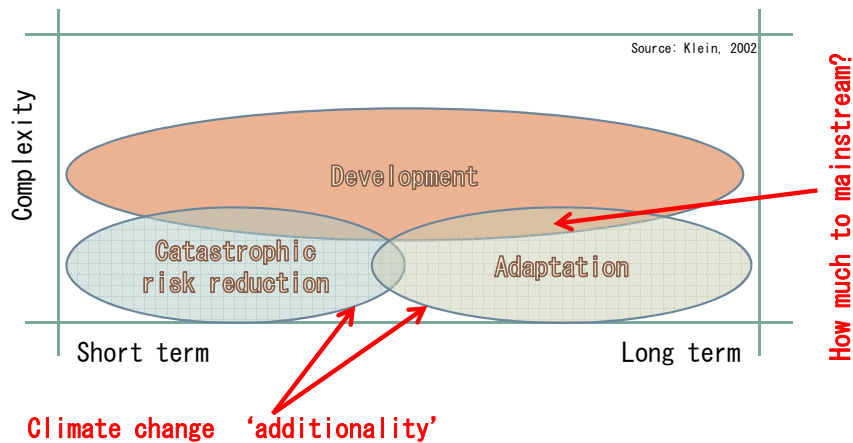
Entry Points for Mainstreaming

Opportunity Group II

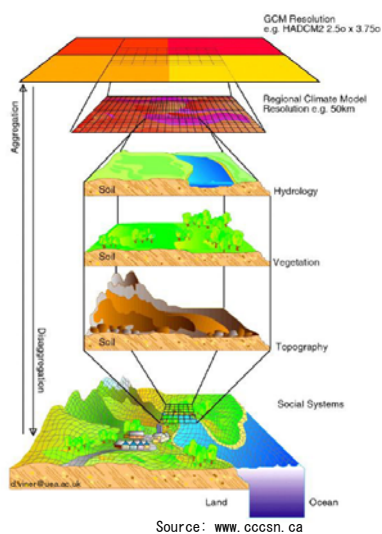


How much to Mainstream?

“How much to mainstream α how much to adapt”

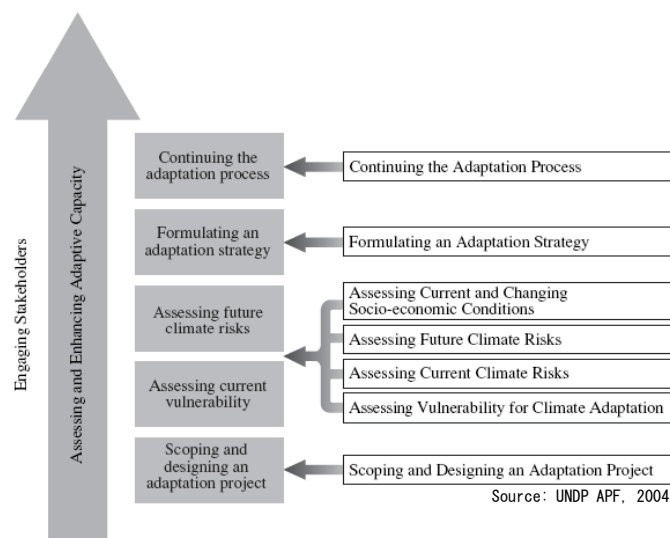


Limits to Adaptation!

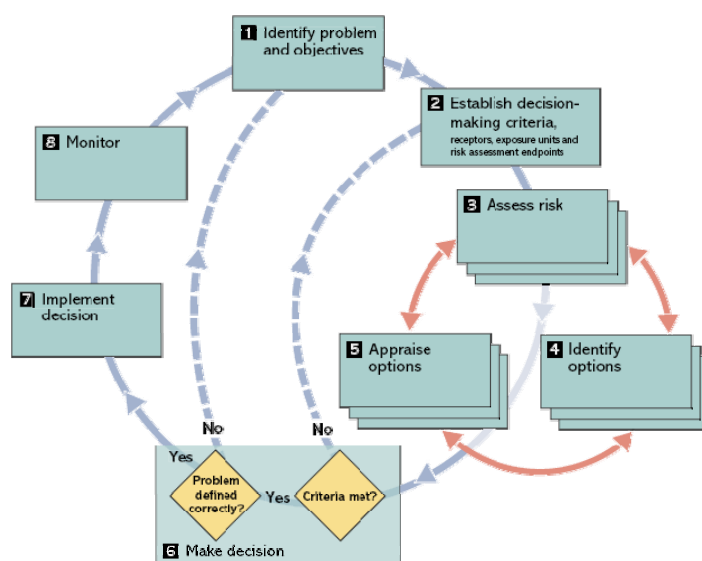


- Low resolution
 - ▣ GCM: 250–600 km²
 - ▣ R(G)CMs: 25–50 km²
 - ▣ FAR: 500 km, AR4: 200 km²
- Limited skill
 - ▣ Our own limited understanding of how land, water and atmosphere interact
 - ▣ Limited/poor quality past climate data records: Downscaling?

Frameworks for Mainstreaming Adaptation: UNDP Adaptation Framework (UNDAF)



Frameworks for Mainstreaming Adaptation: UK CIP Adaptation Decision Making Framework



Willows and Connell, 2003

Comparison of Both Frameworks

| Comparison | UNDPAPF | UKCIP |
|-------------------------------|---|--|
| Target audience | Mostly technical analysts | Mostly decision makers and their advisors |
| Number of stages | 5 main components and 2 crosscutting processes | 8 stages grouped into four |
| Complexity, methods and tools | <ul style="list-style-type: none"> Relies upon various climate parameters and developmental indicators Uses model outputs in assessing the future climate risks | <ul style="list-style-type: none"> Emphasis on techniques such as checklists, consultation processes, and pedigree analysis Uses a mix of qualitative and quantitative methods and tools |
| Uncertainty | Yes while assessing the risks, modeling approaches | At all stages, consultative approaches |
| Levels covered | Local level and national levels | Local and national levels |
| Intended outcomes | Policy development, integrated assessments, and project formulations. | Answers about what kind of adaptation decisions can be taken and when |
| Advised user level | For advanced users and professionals | For beginners with basic understanding of CCA principles |

Source: Prabhakar and Srinivasan, 2009

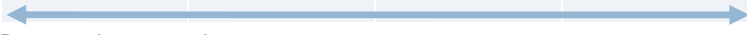
Measuring Progress in Mainstreaming

- Disaster risk reduction and environmental management offers good examples
 - Benfield Hazard Research Center 20-point indicator system
 - **Politics and legislation:** Identifiability, dedicated body, linkages, power to implement
 - **Policies:** Participation, integration in development plans, administration, dedicated plans,
 - **Knowledge:** VA, education, media, community networks, research, skill, capacity and motivation
 - **Practice:** codes, insurance and finances, poverty reduction

Measuring the Progress

□ Tearfund four-level measurement system

| | Level I | Level II | Level III | Level IV |
|--------------------------|-------------------------|---------------------------|---------------------------|--------------------------------------|
| | No capacity/recognition | Recognizes, has resources | Plans and tools available | Tools used, CB programs, inst. links |
| Policies & Strategies | | | | |
| Geographical planning | | | | |
| Project cycle management | | | | |
| External relations | | | | |
| Institutional capacity | | | | |



Way Forward for Effective Mainstreaming

- Made available vulnerability assessments at scales where the mainstreaming has to happen
- Reform the developmental governance
 - ▣ Streamline procedures and inter-agency coordination (e.g. ODA coordination?)
 - ▣ Change mindset from short-term planning to long-term endeavors; from implementers to innovators etc
- Establish a Context
 - ▣ adaptation goals similar to developmental goals
 - ▣ adaptation roadmap at various levels

Way Forward

- Creating environment for incentives
 - ▣ Risk insurance (the more it is mainstreamed the less the insurance premium!)
 - ▣ International drivers (Activities funded under UNFCCC)
- Build upon and scaling up of available best practices of mainstreaming:
Environment and disaster risk reduction can help
- Of course, education and capacity building

Thank You! Contact: prabhakar@iges.or.jp